

MXTG13



smart hot runner solutions

www.mastip.com

Tip and Material Grade Availability

Tip (Code)	G1	G2	G5
Multi-hole Torpedo Tip (X 13 TT)	✓	✓	✓
One-hole Torpedo Tip (X 13 IT)	✓	✓	✓
Open Tip (X 13 OT)	✓	✗	✗

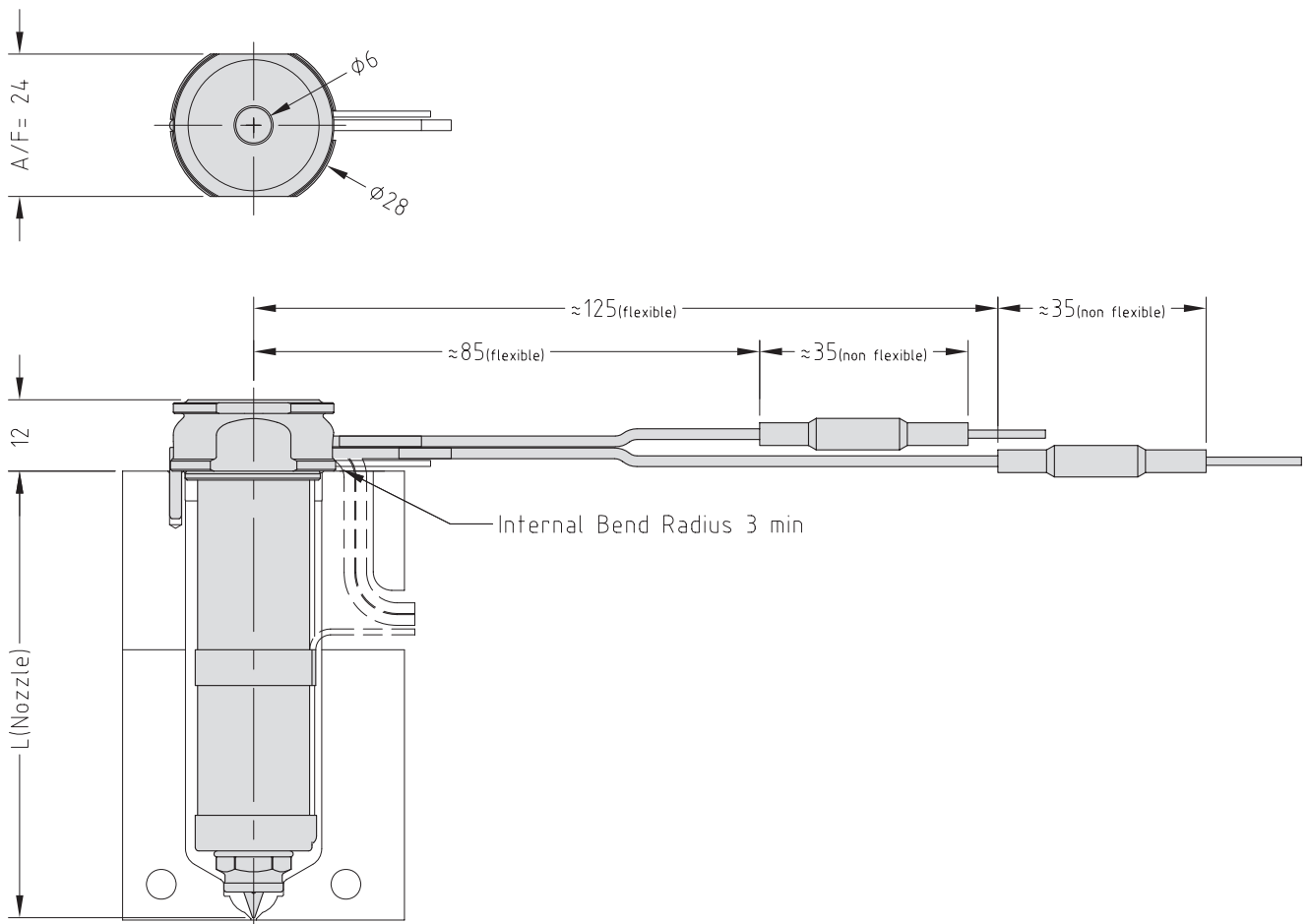
To order a nozzle assembly:

Provide the Nozzle Code + Grade
 (Order example: MXIT13175 G5)

To order a tip:

Provide the Tip Code + Grade
 (Order example: X 13 IT G5)

Nozzle Dimensions

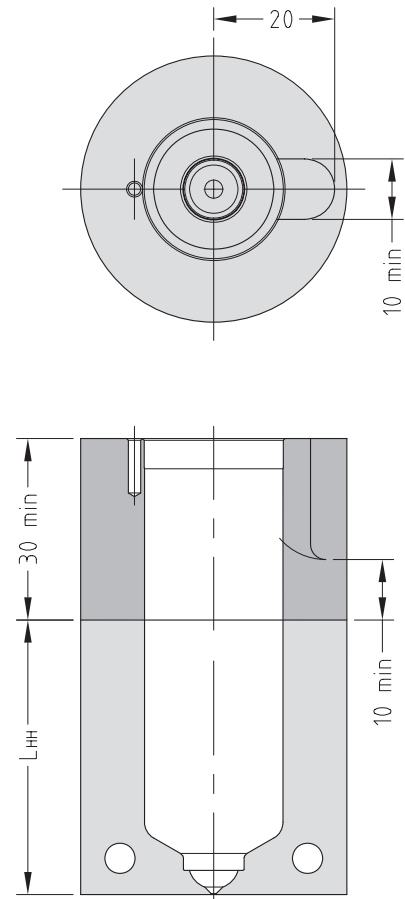
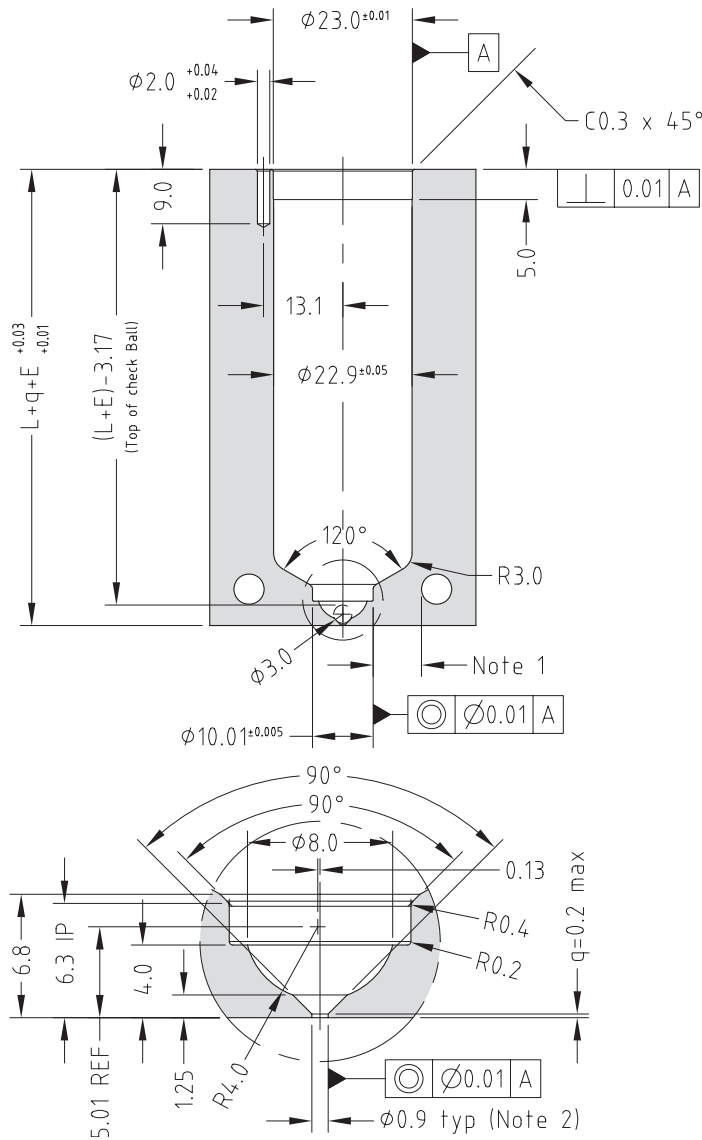


Multi-Hole Torpedo Nozzle Code	One-hole Torpedo Nozzle Code	Open Tip Nozzle Code	L	E@ΔT =200C	E@ΔT =250C
MXTT13045	MXIT13045	MXOT13045	45	0.12	0.15
MXTT13055	MXIT13055	MXOT13055	55	0.15	0.18
MXTT13065	MXIT13065	MXOT13065	65	0.17	0.21
MXTT13075	MXIT13075	MXOT13075	75	0.20	0.25
MXTT13095	MXIT13095	MXOT13095	95	0.25	0.31
MXTT13115	MXIT13115	MXOT13115	115	0.30	0.38
MXTT13145	MXIT13145	MXOT13145	145	0.38	0.48
MXTT13175	MXIT13175	MXOT13175	175	0.46	0.58

Nozzle Fitment and Gate Dimensions

$E = L \times 0.0000132 \times (\text{nozzle temp. } ^\circ\text{C} - \text{mould temp. } ^\circ\text{C})$

Hot Half Configuration



Note

1. Gate cooling is critical for correct operation and gate quality. → See Cooling Section in the Technical Specifications.
 2. Modify gate diameter and land to suit the part. → See Gate Modifications in the Technical Specifications.
- * Minimum strength (σ_y) of nozzle plate 800MPa.

Tip and Material Grade Availability

Tip (Code)	G1	G2	G5
Multi-hole Torpedo Tip (X 13 TT)	✓	✓	✓
One-hole Torpedo Tip (X 13 IT)	✓	✓	✓
Open Tip (X 13 OT)	✓	✗	✗

Bush Nut Options

- BN - Standard bush nut
- BE - Full-contact bush nut*

The nozzle codes listed to the right are for nozzle assemblies with a standard bush nut. To order a full-contact bush nut, replace the BN in the code with BE.

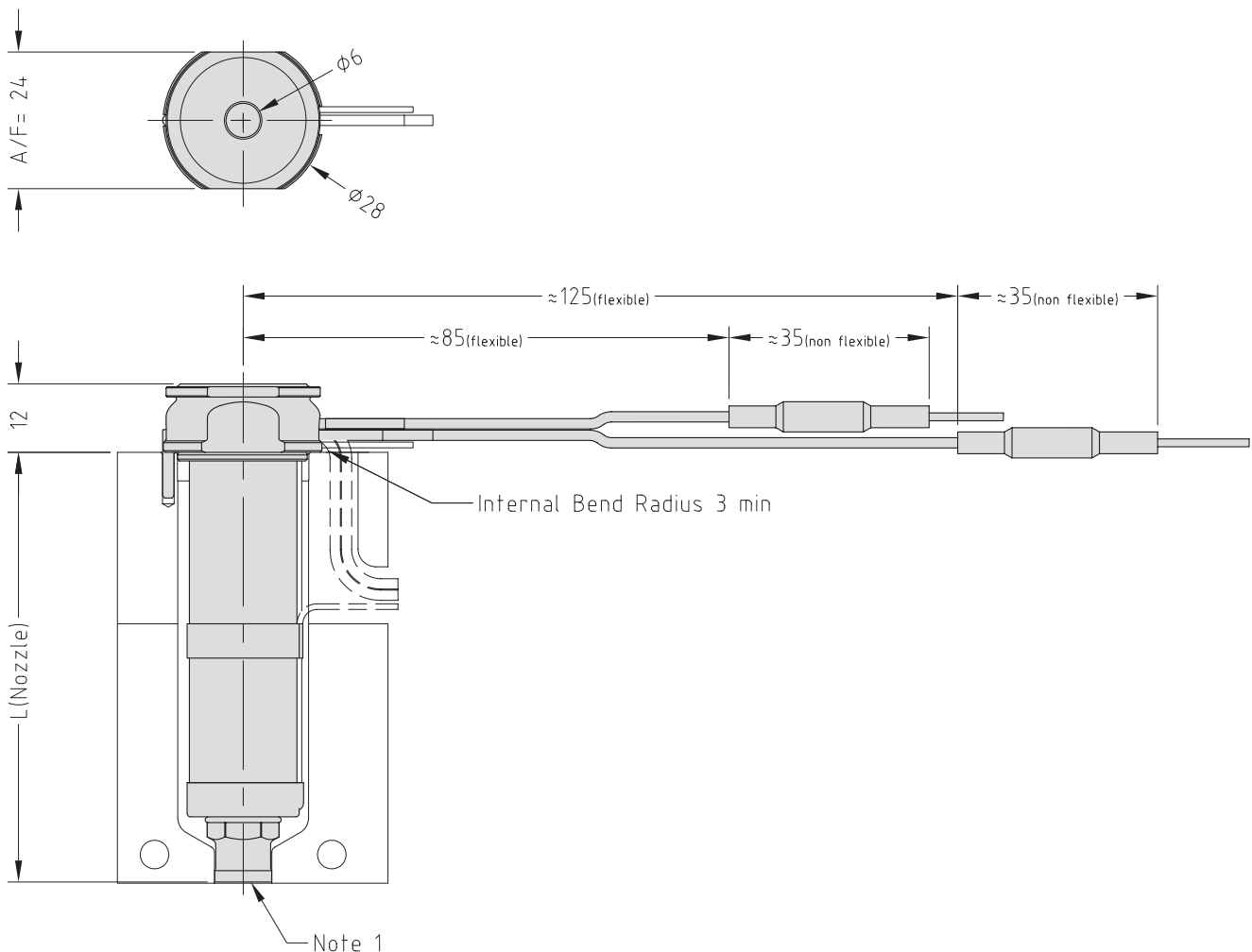
To order a nozzle assembly:

Provide the Nozzle Code + Grade
(Order example: MXIBN13175 G5)

To order a tip:

Provide the Tip Code + Grade
(Order example: X 13 IT G5)

Nozzle Dimensions



Note

1. Modify the contact area to suit the application.

→ See Gate Modifications and Cooling sections in the Technical Specifications.

Tip and Material Grade Availability

Tip (Code)	G1	G2	G5
Multi-hole Torpedo Tip (X 13 TT)	✓	✓	✓
One-hole Torpedo Tip (X 13 IT)	✓	✓	✓
Open Tip (X 13 OT)	✓	✗	✗

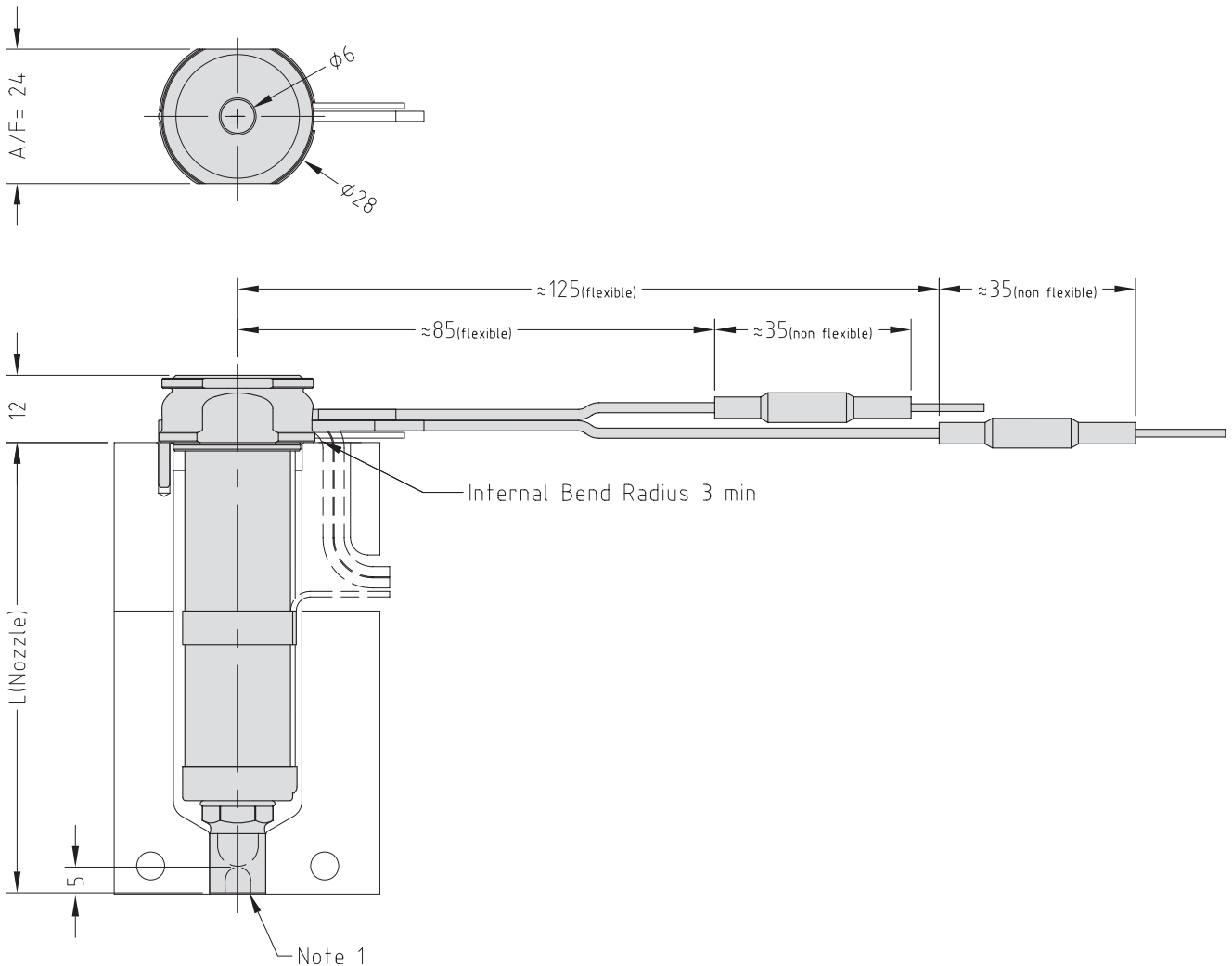
To order a nozzle assembly:

Provide the Nozzle Code + Grade
 (Order example: MXISN13175 G5)

To order a tip:

Provide the Tip Code + Grade
 (Order example: X 13 IT G5)

Nozzle Dimensions



Note

1. Modify the contact area and the sprue nut to suit the application.
 → See Gate Modifications and Cooling sections in the Technical Specifications.

Tip and Material Grade Availability

Tip (Code)	G1	G2	G5
Multi-hole Torpedo Tip (X 13 TT)	✓	✓	✓
One-hole Torpedo Tip (X 13 IT)	✓	✓	✓
Open Tip (X 13 OT)	✓	✗	✗

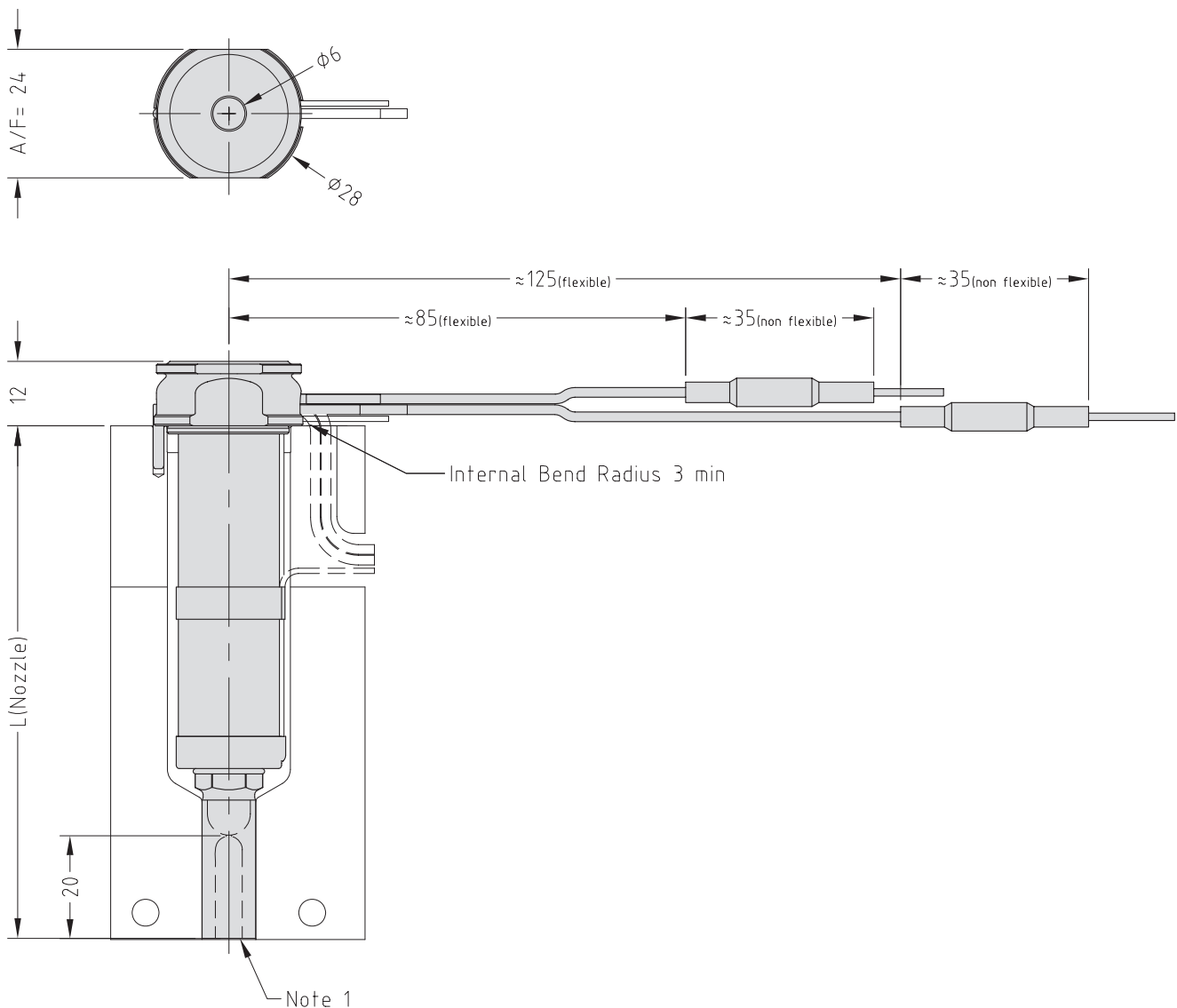
To order a nozzle assembly:

Provide the Nozzle Code + Grade
(Order example: MXISX13175 G5)

To order a tip:

Provide the Tip Code + Grade
(Order example: X 13 IT G5)

Nozzle Dimensions



Note

1. Modify the contact area and the sprue nut to suit the application.
→ See Gate Modifications and Cooling sections in the Technical Specifications.

Tip and Material Grade Availability

Tip (Code)	G1	G2	G5
Multi-hole Torpedo Tip (X 13 TT)	✓	✓	✓
One-hole Torpedo Tip (X 13 IT)	✓	✓	✓
Open Tip (X 13 OT)	✓	✗	✗

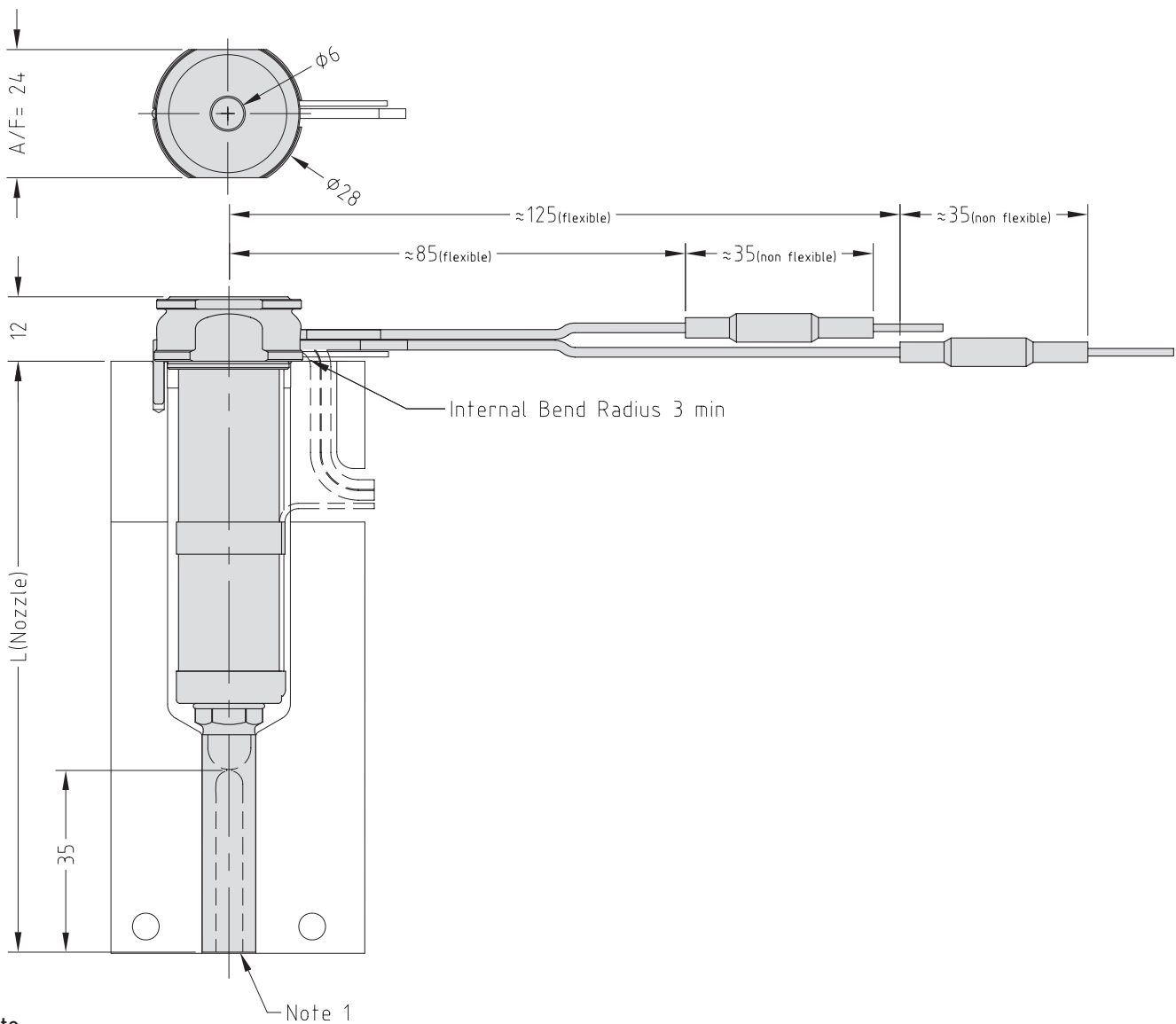
To order a nozzle assembly:

Provide the Nozzle Code + Grade
(Order example: MXISL13175 G5)

To order a tip:

provide the Tip Code + Grade
(Order example: X 13 IT G5)

Nozzle Dimensions



Note

1. Modify the contact area and the sprue nut to suit the application.
→ See Gate Modifications and Cooling sections in the Technical Specifications.

Tip and Material Grade Availability

Tip (Code)	G1	G2	G5
Multi-hole Torpedo Tip (X 13 TT+5)	✓	✓	✗
One-hole Torpedo Tip (X 13 IT+5)	✓	✓	✗
Open Tip	✗	✗	✗

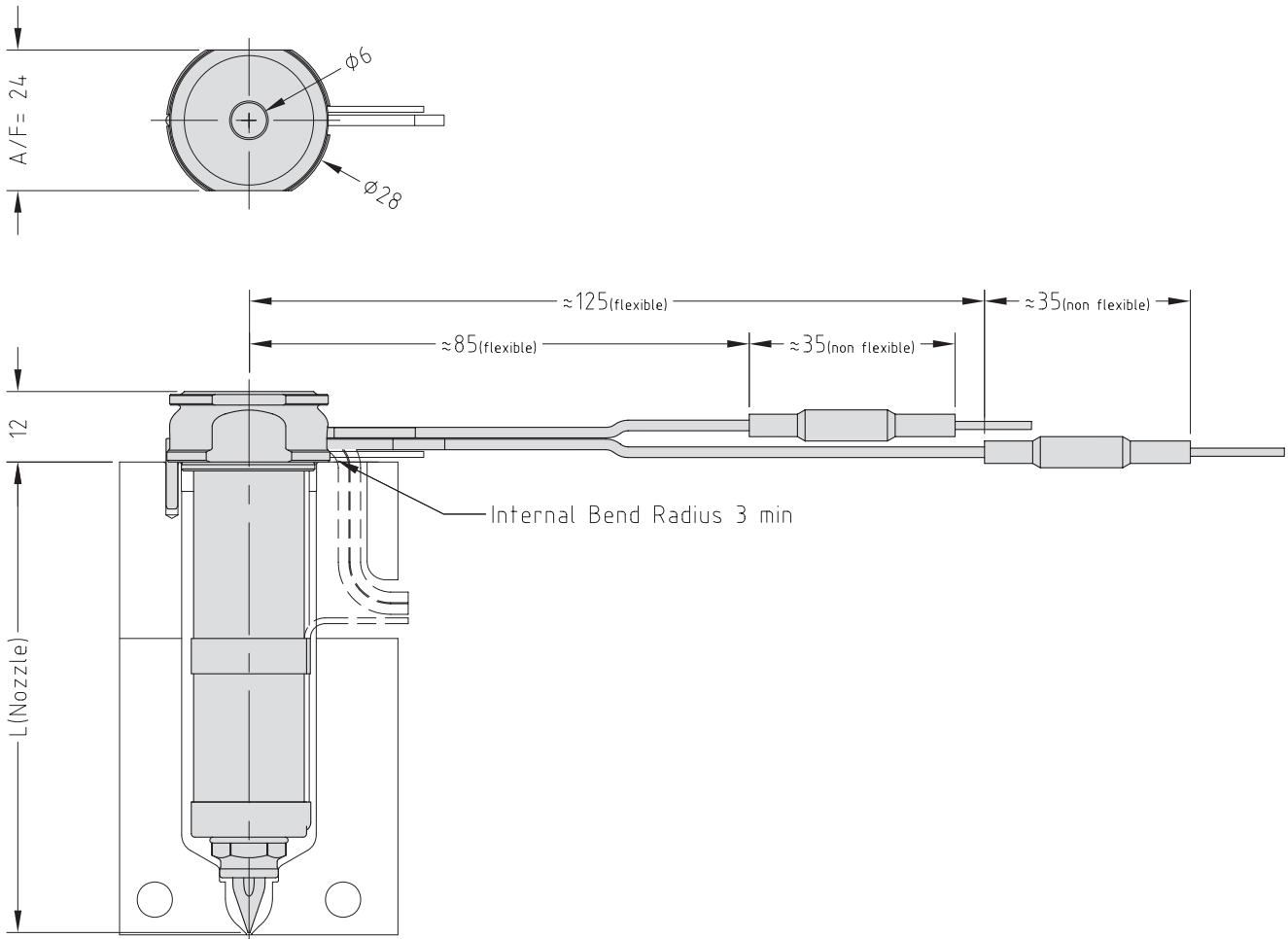
To order a nozzle assembly:

Provide the Nozzle Code + Grade
(Order example: MXIT13175+5 G1)

To order a tip:

Provide the Tip Code + Grade
(Order example: X 13 IT+5 G1)

Nozzle Dimensions



Tip and Material Grade Availability

Tip (Code)	G1	G2	G5
Multi-hole Torpedo Tip (X 13 TT+10)	✓	✓	✗
One-hole Torpedo Tip (X 13 IT+10)	✓	✓	✗
Open Tip	✗	✗	✗

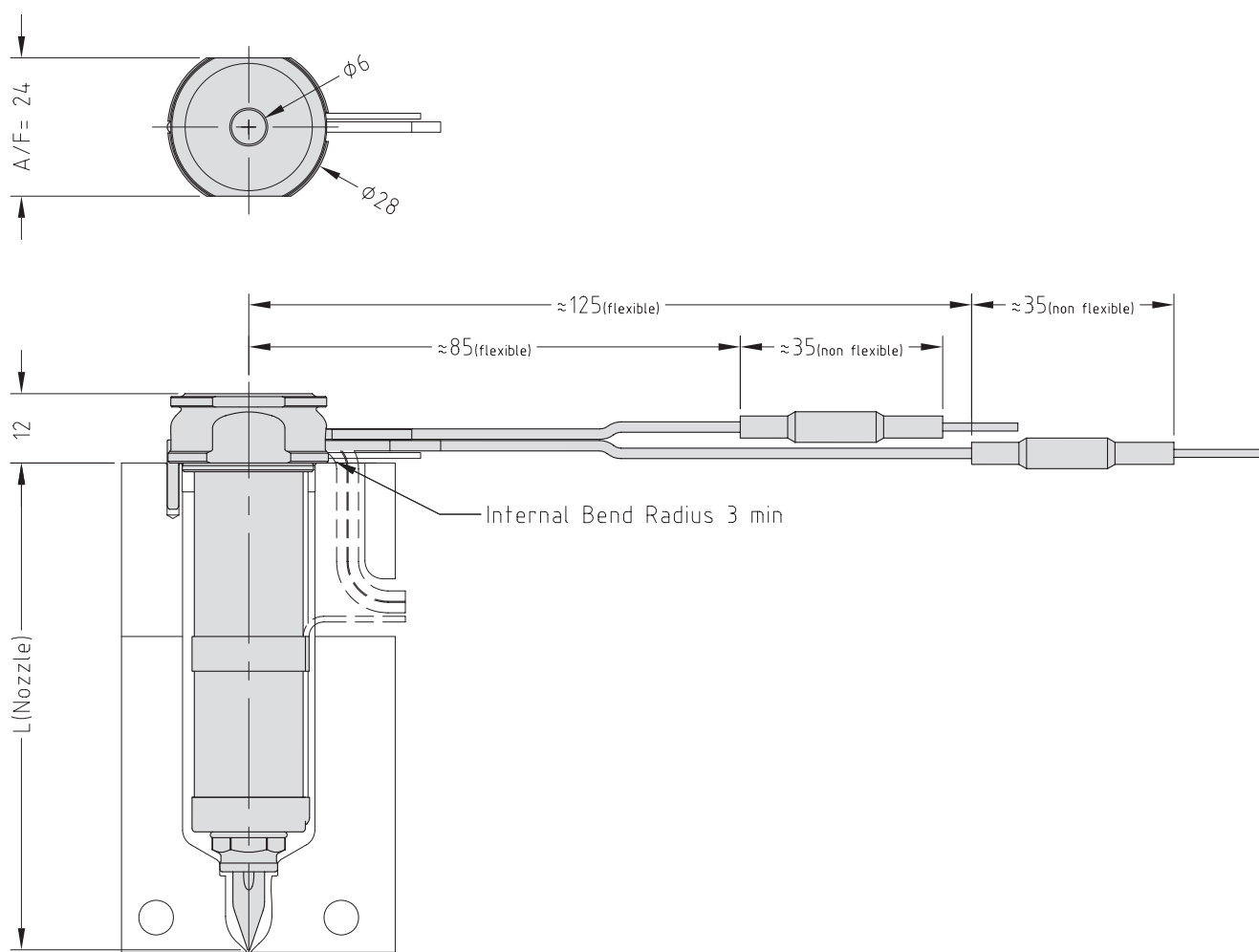
To order a nozzle assembly:

Provide the Nozzle Code + Grade
(Order example: MXIT13175+10 G1)

To order a tip:

Provide the Tip Code + Grade
(Order example: X 13 IT+10 G1)

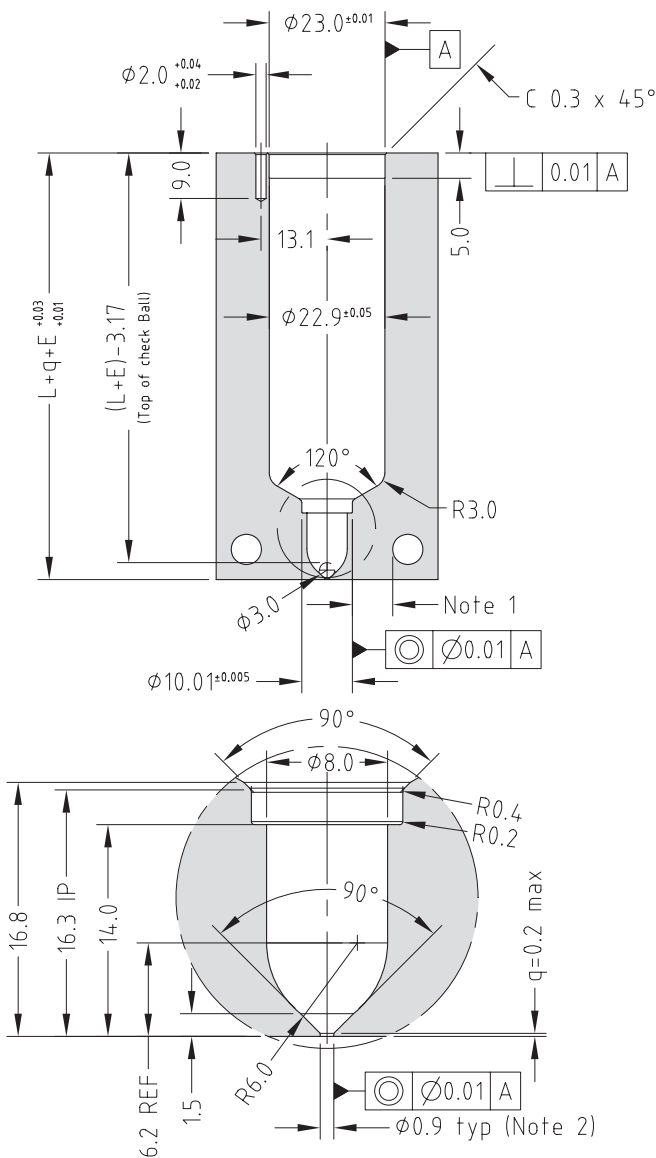
Nozzle Dimensions



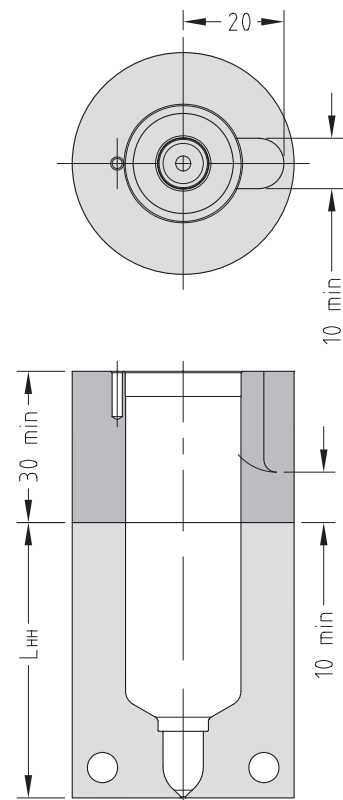
Multi-hole Torpedo Tip Nozzle Code	One-hole Torpedo Tip Nozzle Code	L	E@ΔT =200C	E@ΔT =250C
MXTT13045+10	MXIT13045+10	55	0.15	0.18
MXTT13055+10	MXIT13055+10	65	0.17	0.21
MXTT13065+10	MXIT13065+10	75	0.20	0.25
MXTT13075+10	MXIT13075+10	85	0.22	0.28
MXTT13095+10	MXIT13095+10	105	0.28	0.35
MXTT13115+10	MXIT13115+10	125	0.33	0.41
MXTT13145+10	MXIT13145+10	155	0.41	0.51
MXTT13175+10	MXIT13175+10	185	0.49	0.61

Nozzle Fitment and Gate Dimensions

$E = L \times 0.000132 \times (\text{nozzle temp. } ^\circ\text{C} - \text{mould temp. } ^\circ\text{C})$



Hot Half Configuration



Note

- Gate cooling is critical for correct operation and gate quality. → See Cooling section in the Technical Specifications.
 - Modify gate diameter and land to suit the part. → See Gate Modifications in the Technical Specifications.
- * Minimum strength (σ_y) of nozzle plate 800MPa.

Mastip Head Office New Zealand

558 Rosebank Road
Avondale 1026, Auckland
PO Box 90-651
Victoria Street West
Auckland 1142
New Zealand
Phone: +64 9 970 2100
Fax: +64 9 970 2070
Email: mastip@mastip.com

Mastip Regional Office Europe

Phone: +33 4 724 72 800
Fax: +33 4 724 72 801
Email: europe@mastip.com

Mastip Regional Office China

Phone: +86 21 644 77838
Fax: +86 21 644 77828
Email: china@mastip.com

Mastip Regional Office North America

Phone: +1 262 644 9400
Fax: +1 262 644 9402
Email: northamerica@mastip.com

40-000-003

V1.03



MXTG16



smart hot runner solutions

www.mastip.com

Tip and Material Grade Availability

Tip (Code)	G1	G2	G5
Multi-hole Torpedo Tip (X 16 TT)	✓	✓	✓
One-hole Torpedo Tip (X 16 IT)	✓	✓	✓
Open Tip (X 16 OT)	✓	✗	✗

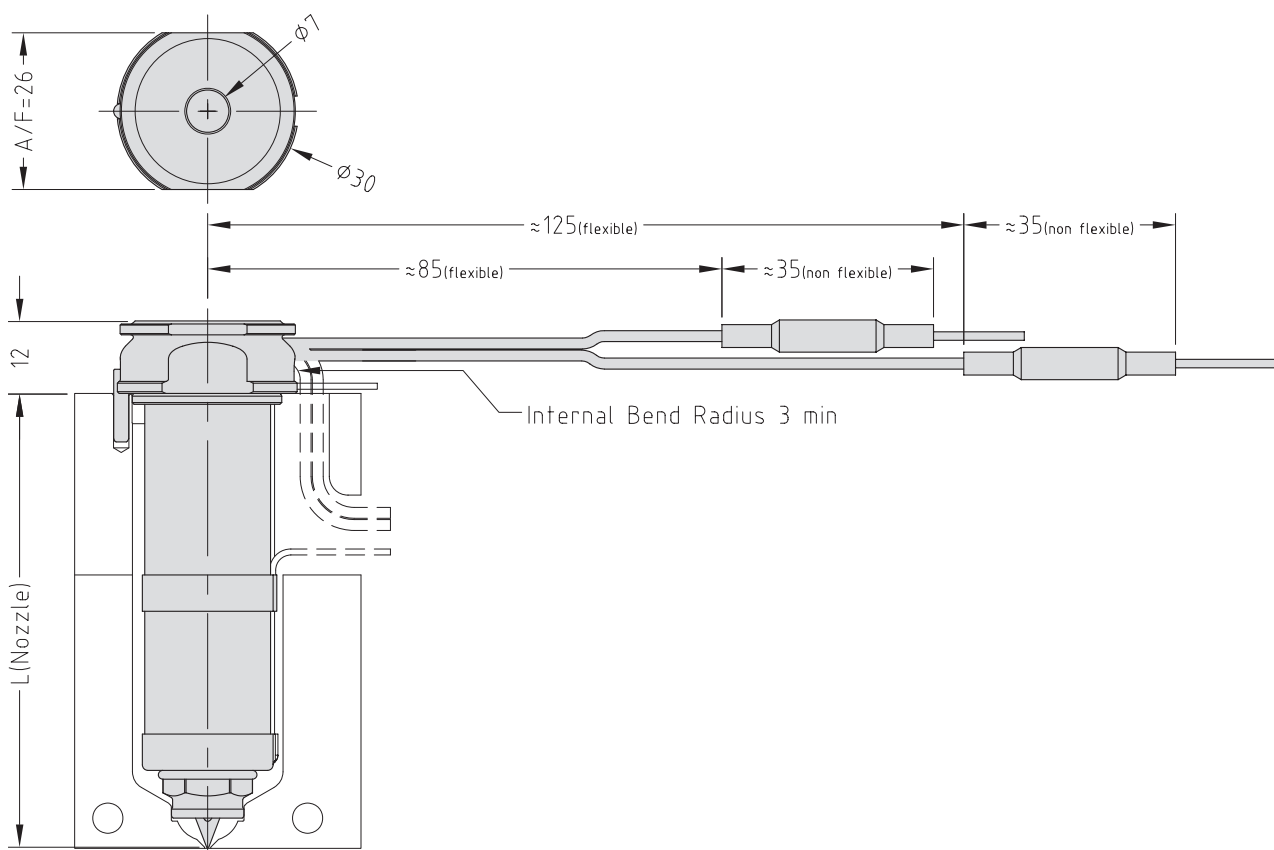
To order a nozzle assembly:

Provide the Nozzle Code + Grade
(Order example: MXIT16175 G5)

To order a tip:

Provide the Tip Code + Grade
(Order example: X 16 IT G5)

Nozzle Dimensions



Tip and Material Grade Availability

Tip (Code)	G1	G2	G5
Multi-hole Torpedo Tip (X 16 TT)	✓	✓	✓
One-hole Torpedo Tip (X 16 IT)	✓	✓	✓
Open Tip (X 16 OT)	✓	✗	✗

Bush Nut Options

- BN - Standard bush nut
- BE - Full-contact bush nut*

The nozzle codes listed to the right are for nozzle assemblies with a standard bush nut. To order a full-contact bush nut, replace the BN in the code with BE.

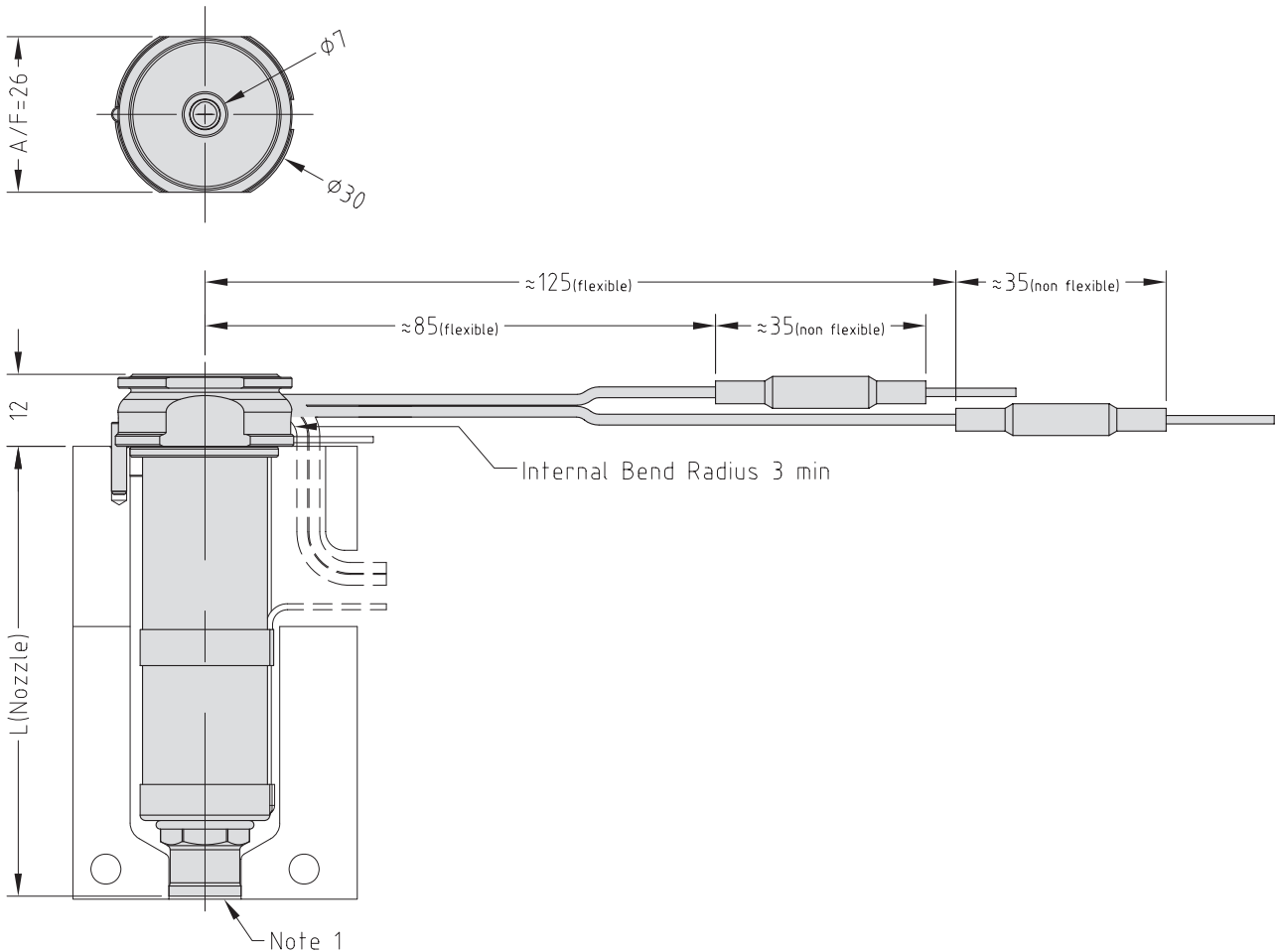
To order a nozzle assembly:

Provide the Nozzle Code + Grade
(Order example: MXTBN16175 G5)

To order a tip:

Provide the Tip Code + Grade
(Order example: X 16 IT G5)

Nozzle Dimensions



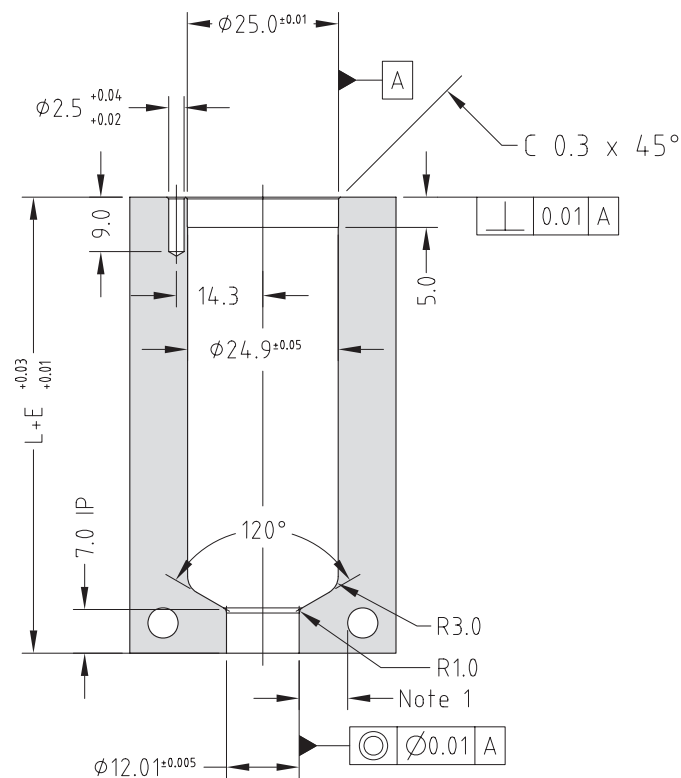
Note

1. Modify the contact area to suit the application.
→ See Gate Modifications and Cooling sections in the Technical Specifications.

Multi-hole Torpedo Tip Nozzle Code	One-hole Torpedo Tip Nozzle Code	Open Tip Nozzle Code	L	E@ΔT =200C	E@ΔT =250C
MXTBN16045	MXIBN16045	MXOBN16045	45.2	0.12	0.15
MXTBN16055	MXIBN16055	MXOBN16055	55.2	0.15	0.18
MXTBN16065	MXIBN16065	MXOBN16065	65.2	0.17	0.22
MXTBN16075	MXIBN16075	MXOBN16075	75.2	0.20	0.25
MXTBN16095	MXIBN16095	MXOBN16095	95.2	0.25	0.31
MXTBN16115	MXIBN16115	MXOBN16115	115.2	0.30	0.38
MXTBN16145	MXIBN16145	MXOBN16145	145.2	0.38	0.48
MXTBN16175	MXIBN16175	MXOBN16175	175.2	0.46	0.58

Nozzle Fitment and Gate Dimensions

$$E = L \times 0.0000132 \times (\text{nozzle temp. } ^\circ\text{C} - \text{mould temp. } ^\circ\text{C})$$



Note

- Gate cooling is critical for correct operation and gate quality. → See Cooling Section in the Technical Specifications.
 - Modify gate diameter and land to suit the part. Supplied with $\varnothing 1.0$ → See Gate Modifications in the Technical Specifications.
- * Minimum strength (σ_y) of nozzle plate 800MPa.
 ** Hot half configurations are not recommended for bush nut nozzles.

Tip and Material Grade Availability

Tip (Code)	G1	G2	G5
Multi-hole Torpedo Tip (X 16 TT)	✓	✓	✓
One-hole Torpedo Tip (X 16 IT)	✓	✓	✓
Open Tip (X 16 OT)	✓	✗	✗

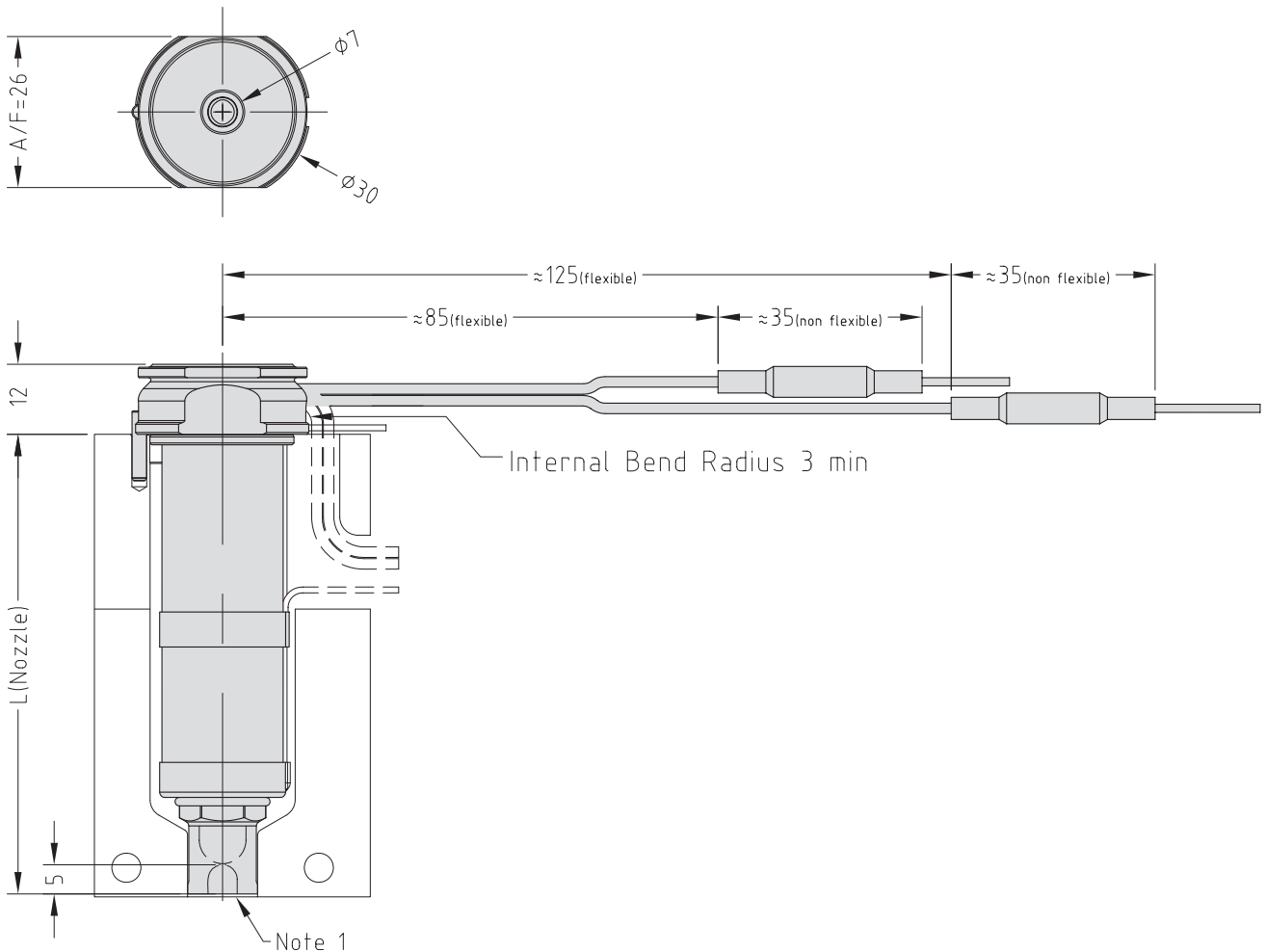
To order a nozzle assembly:

Provide the Nozzle Code + Grade
 (Order example: MXOSN16175 G1)

To order a tip:

Provide the Tip Code + Grade
 (Order example: X 16 IT G5)

Nozzle Dimensions



Note

1. Modify the contact area and the sprue nut to suit the application.
 → See Gate Modifications and Cooling sections in the Technical Specifications.

Tip and Material Grade Availability

Tip (Code)	G1	G2	G5
Multi-hole Torpedo Tip (X 16 TT)	✓	✓	✓
One-hole Torpedo Tip (X 16 IT)	✓	✓	✓
Open Tip (X 16 OT)	✓	✗	✗

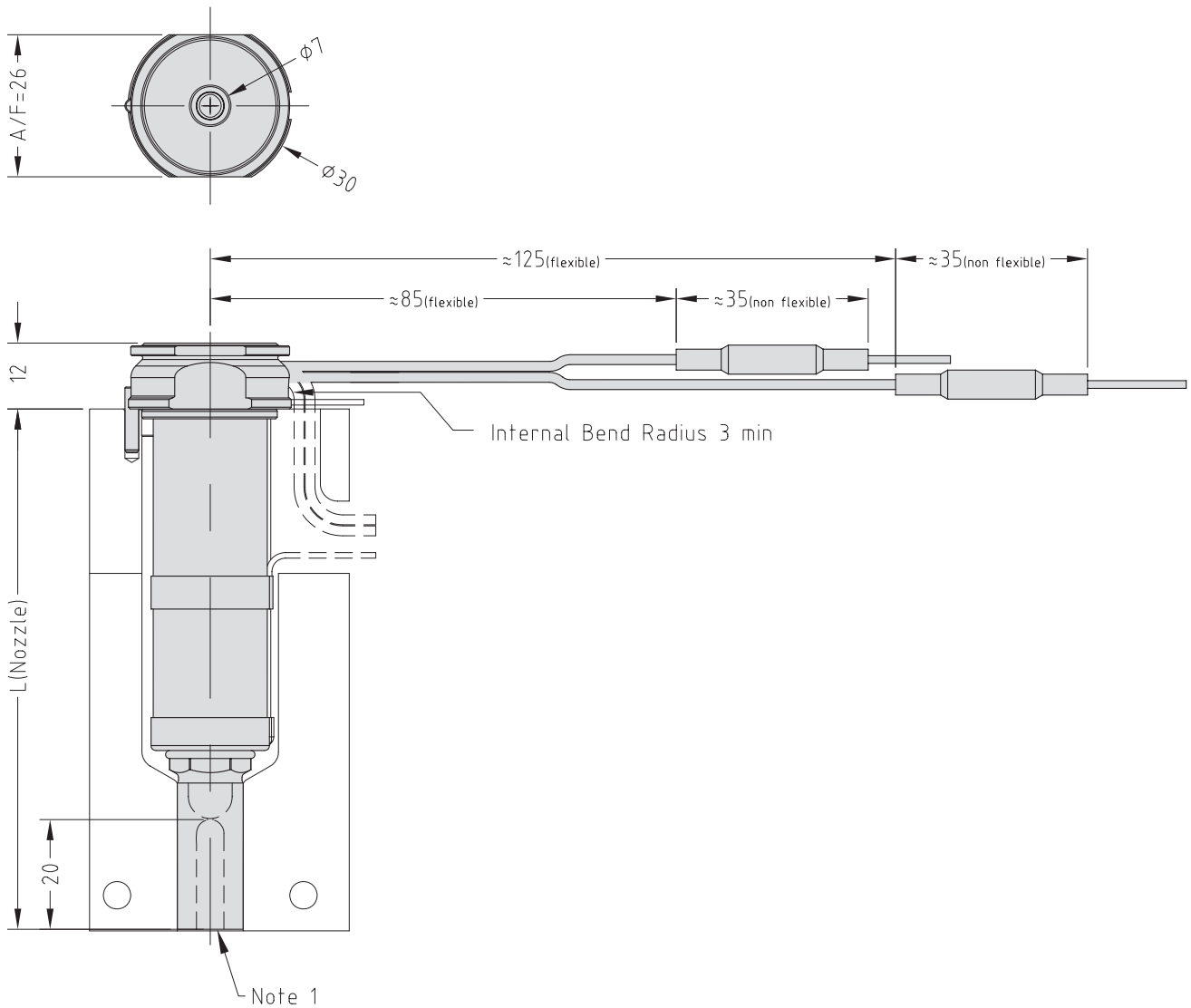
To order a nozzle assembly:

Provide the Nozzle Code + Grade
 (Order example: MXOSX16175 G1)

To order a tip:

Provide the Tip Code + Grade
 (Order example: X 16 IT G5)

Nozzle Dimensions



Note

1. Modify the contact area and the sprue nut to suit the application.
 → See Gate Modifications and Cooling sections in the Technical Specifications.

Tip and Material Grade Availability

Tip (Code)	G1	G2	G5
Multi-hole Torpedo Tip (X 16 TT)	✓	✓	✓
One-hole Torpedo Tip (X 16 IT)	✓	✓	✓
Open Tip (X 16 OT)	✓	✗	✗

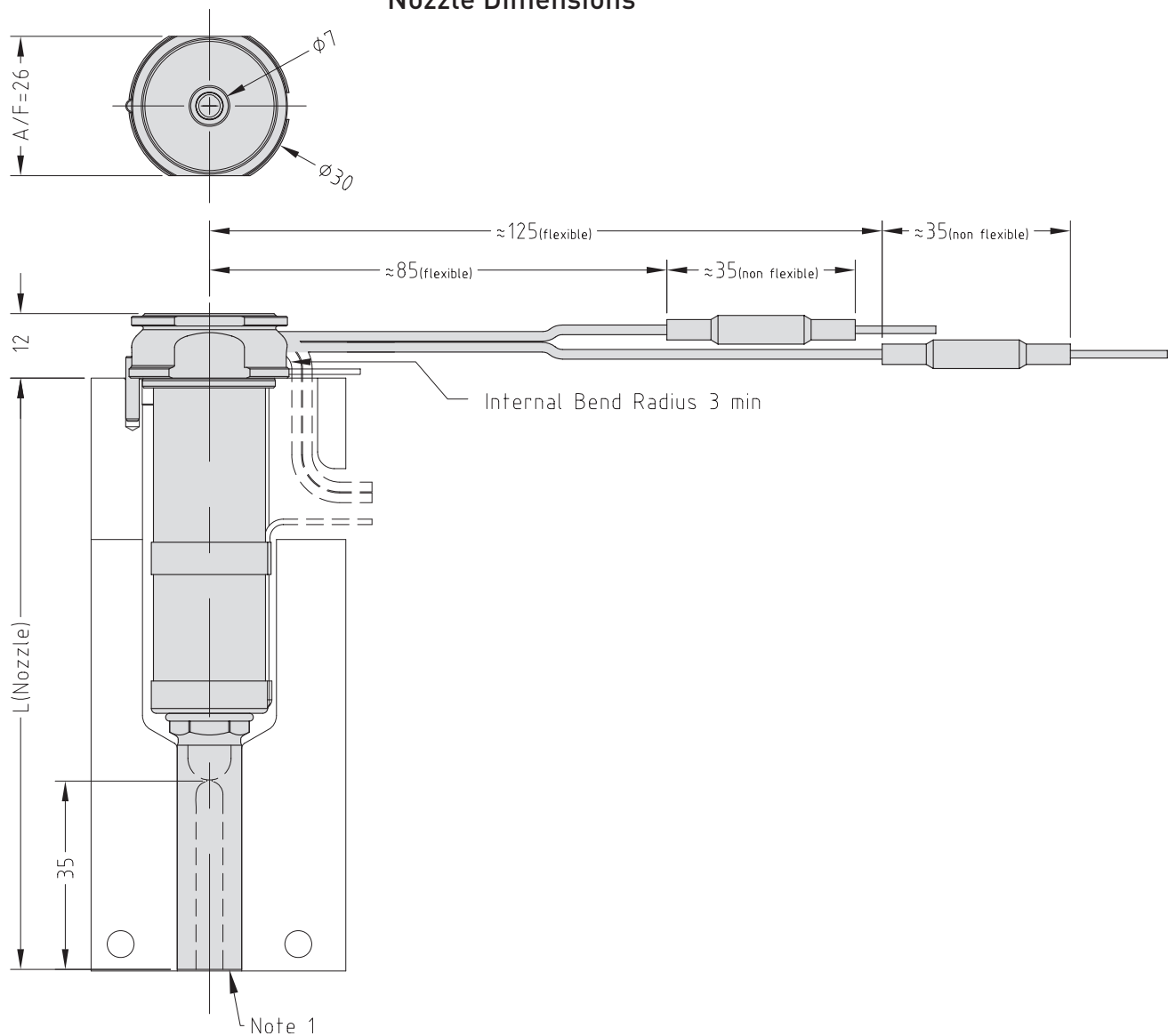
To order a nozzle assembly:

Provide the Nozzle Code + Grade
 (Order example: MXOSL16175 G1)

To order a tip:

Provide the Tip Code + Grade
 (Order example: X 16 IT G5)

Nozzle Dimensions



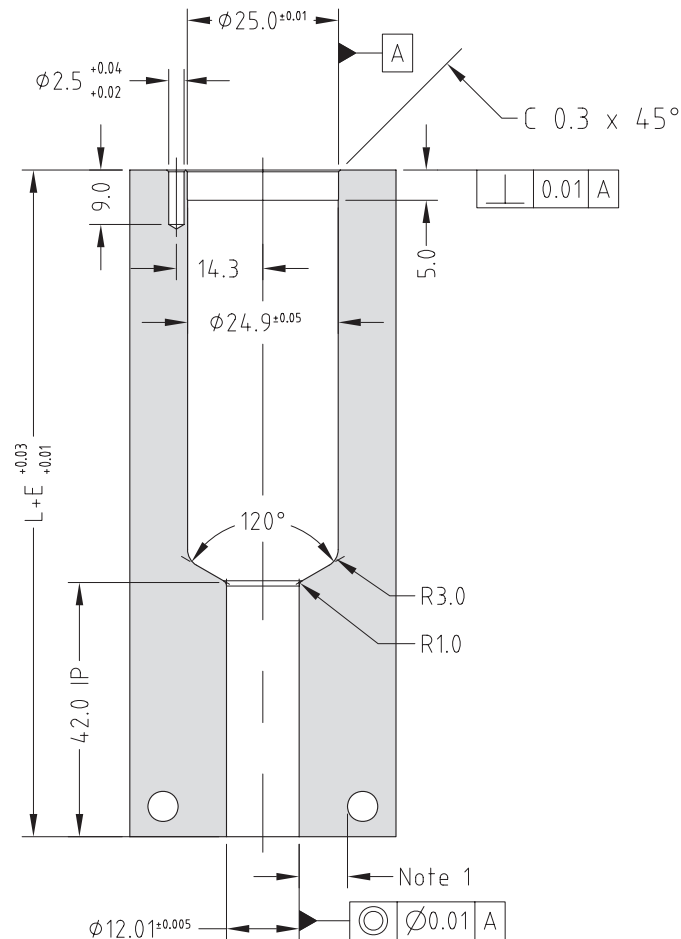
Note

1. Modify the contact area and the sprue nut to suit the application.
 → See Gate Modifications and Cooling sections in the Technical Specifications.

Multi-hole Torpedo Tip Nozzle Code	One-hole Torpedo Tip Nozzle Code	Open Tip Nozzle Code	L	$E @ \Delta T = 200C$	$E @ \Delta T = 250C$
MXTSL16045	MXISL16045	MXOSL16045	80.2	0.21	0.26
MXTSL16055	MXISL16055	MXOSL16055	90.2	0.24	0.30
MXTSL16065	MXISL16065	MXOSL16065	100.2	0.26	0.33
MXTSL16075	MXISL16075	MXOSL16075	110.2	0.29	0.36
MXTSL16095	MXISL16095	MXOSL16095	130.2	0.34	0.43
MXTSL16115	MXISL16115	MXOSL16115	150.2	0.40	0.50
MXTSL16145	MXISL16145	MXOSL16145	180.2	0.48	0.59
MXTSL16175	MXISL16175	MXOSL16175	210.2	0.55	0.69

Nozzle Fitment and Gate Dimensions

$$E = L \times 0.0000132 \times (\text{nozzle temp. } ^\circ\text{C} - \text{mould temp. } ^\circ\text{C})$$



Note

- Gate cooling is critical for correct operation and gate quality. → See Cooling section in the Technical Specifications.
 - Modify gate diameter and land to suit the part. Supplied with $\phi 1.0$ → See Gate Modifications in the Technical Specifications.
- * Minimum strength (σ_y) of nozzle plate 800MPa.
 ** Hot half configurations are not recommended for sprue nut nozzles.

Tip and Material Grade Availability

Tip (Code)	G1	G2	G5
Multi-hole Torpedo Tip (X 16 TT+5)	✓	✓	✗
One-hole Torpedo Tip (X 16 IT+5)	✓	✓	✗
Open Tip	✗	✗	✗

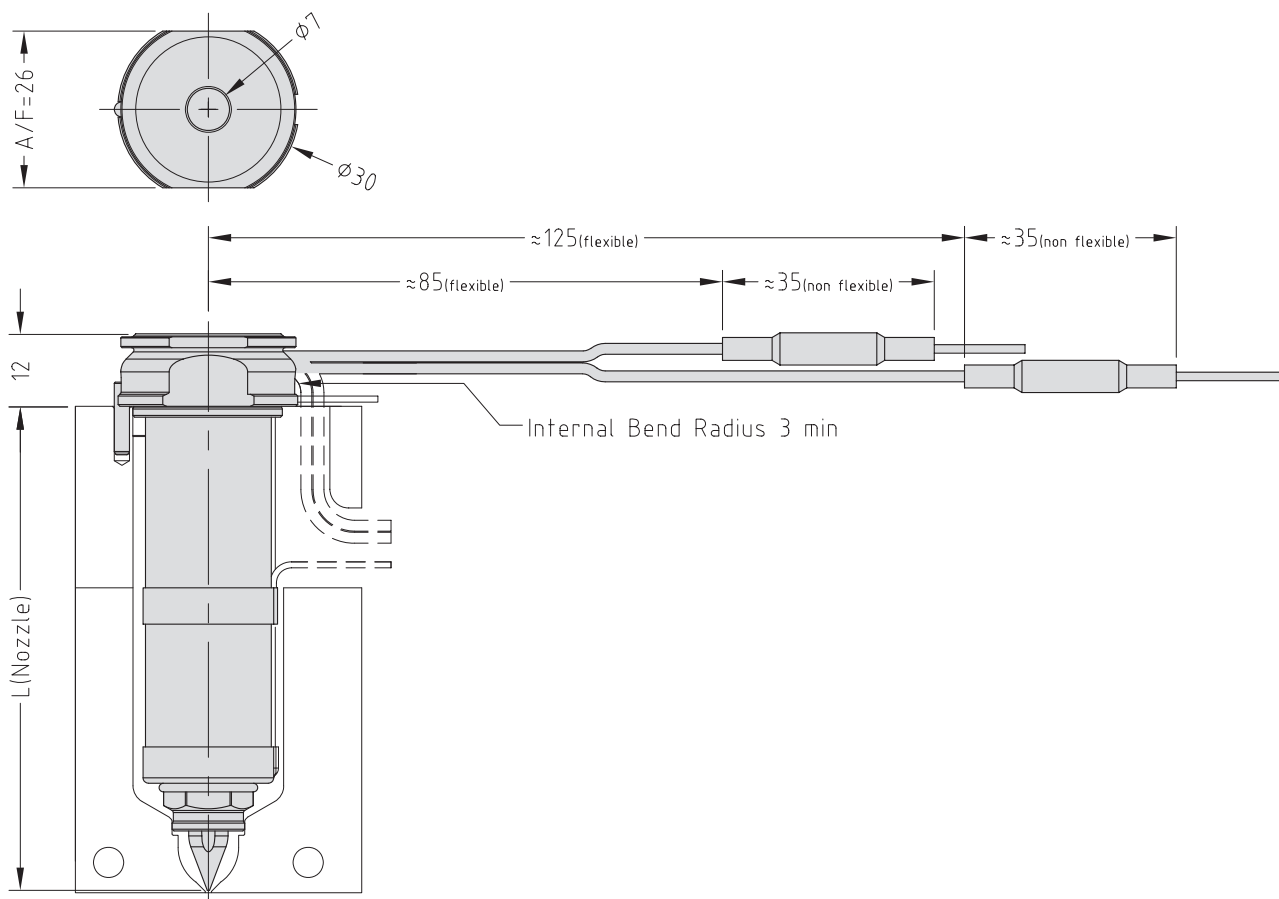
To order a nozzle assembly:

Provide the Nozzle Code + Grade
 (Order example: MXTT16175+5 G1)

To order a tip:

Provide the Tip Code + Grade
 (Order example: X 16 IT+5 G1)

Nozzle Dimensions



Tip and Material Grade Availability

Tip (Code)	G1	G2	G5
Multi-hole Torpedo Tip (X 16 TT+10)	✓	✓	✗
One-hole Torpedo Tip (X 16 IT+10)	✓	✓	✗
Open Tip	✗	✗	✗

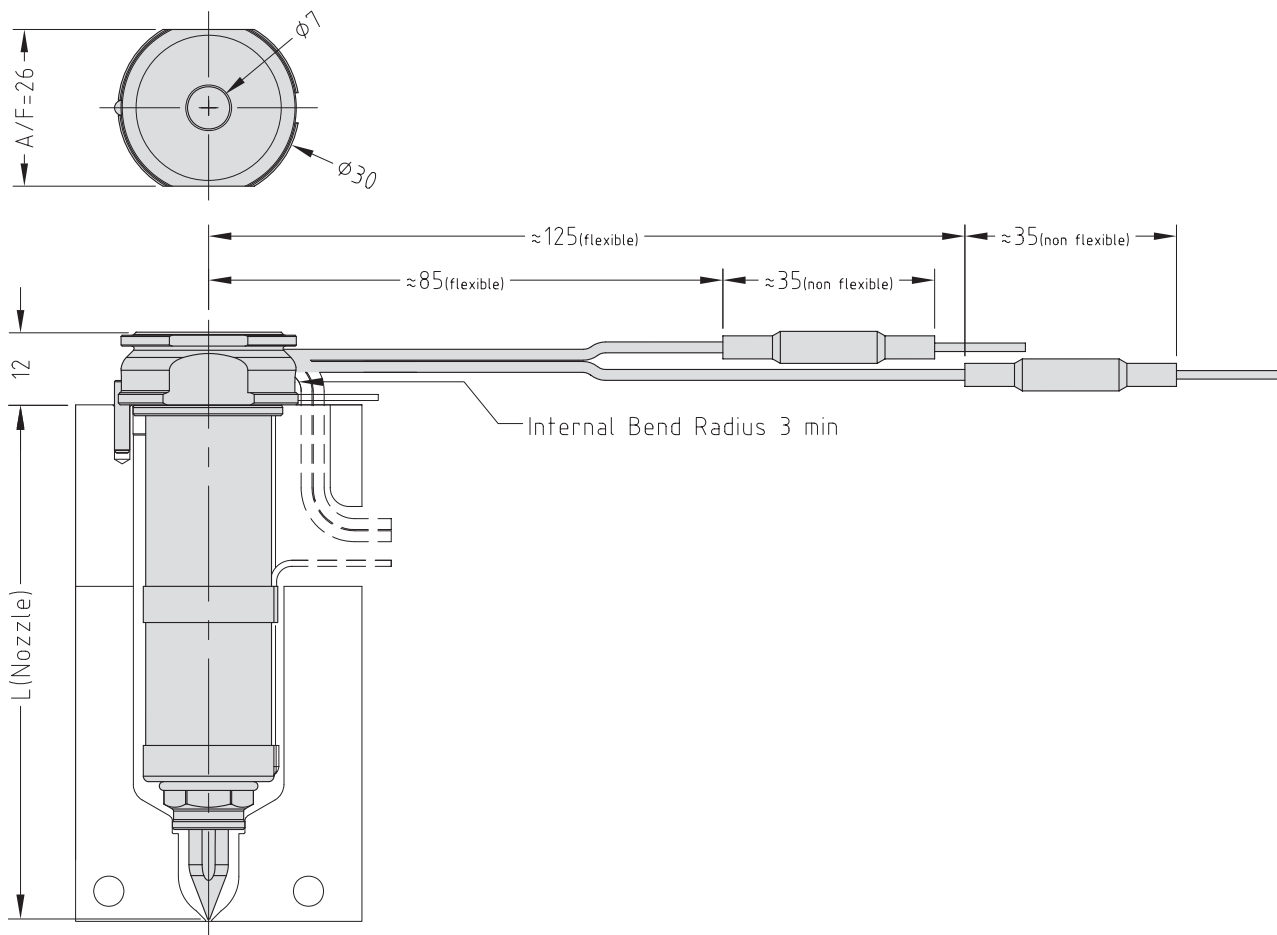
To order a nozzle assembly:

Provide the Nozzle Code + Grade
(Order example: MXTT16175+10 G1)

To order a tip:

Provide the Tip Code + Grade
(Order example: X 16 IT+10 G1)

Nozzle Dimensions



Mastip Head Office New Zealand

558 Rosebank Road
Avondale 1026, Auckland
PO Box 90-651
Victoria Street West
Auckland 1142
New Zealand
Phone: +64 9 970 2100
Fax: +64 9 970 2070
Email: mastip@mastip.com

Mastip Regional Office Europe

Phone: +33 4 724 72 800
Fax: +33 4 724 72 801
Email: europe@mastip.com

Mastip Regional Office China

Phone: +86 21 644 77838
Fax: +86 21 644 77828
Email: china@mastip.com

Mastip Regional Office North America

Phone: +1 262 644 9400
Fax: +1 262 644 9402
Email: northamerica@mastip.com

40-000-013 V1.03



MXTG19



smart hot runner solutions

www.mastip.com

Tip and Material Grade Availability

Tip (Code)	G1	G2	G5
Multi-hole Torpedo Tip (X 19 TT)	✓	✓	✓
One-hole Torpedo Tip (X 19 IT)	✓	✓	✓
Open Tip (X 19 OT)	✓	✗	✓

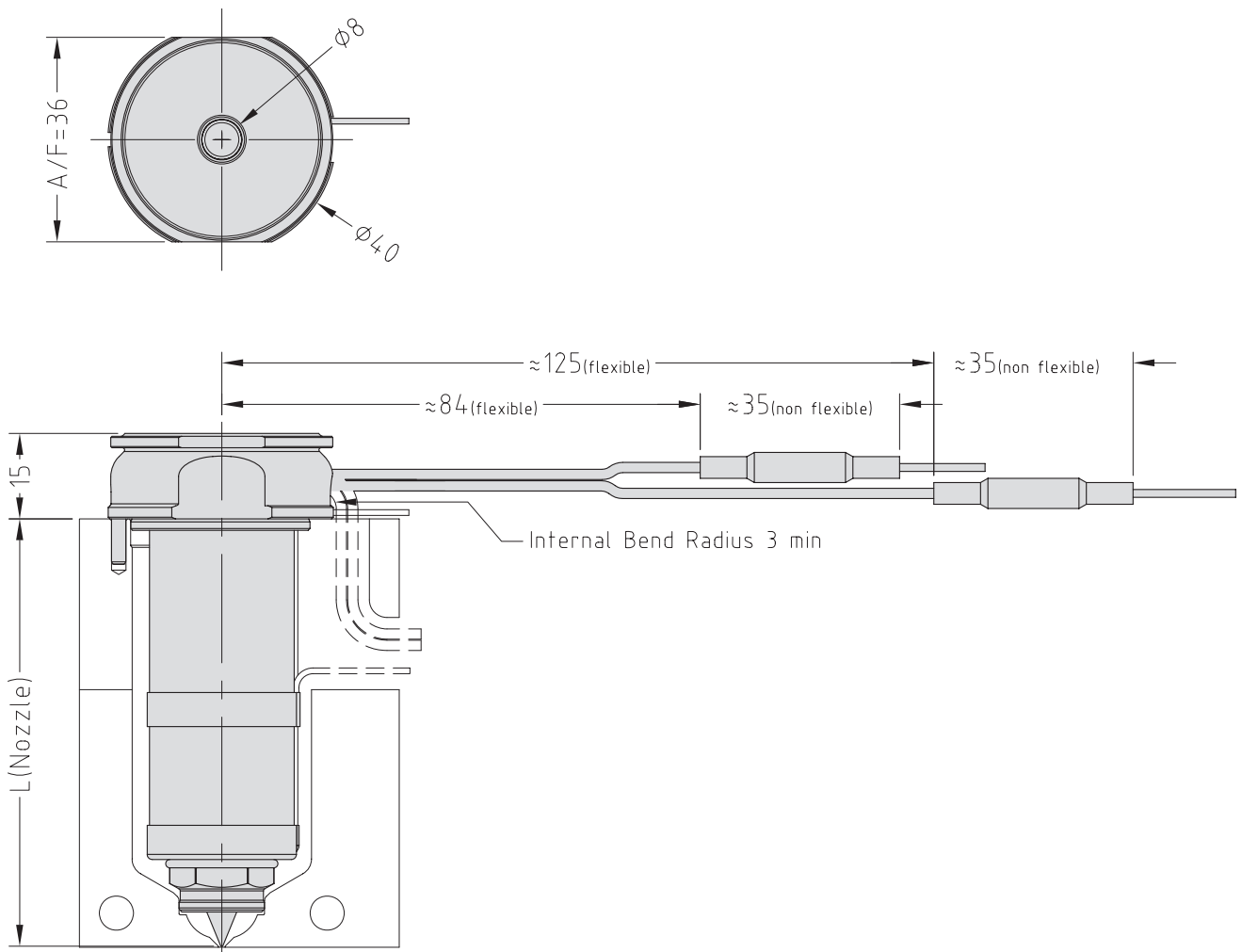
To order a nozzle assembly:

Provide the Nozzle Code + Grade
 (Order example: MXIT19175 G1)

To order a tip:

Provide the Tip Code + Grade
 (Order example: X 19 OT G5)

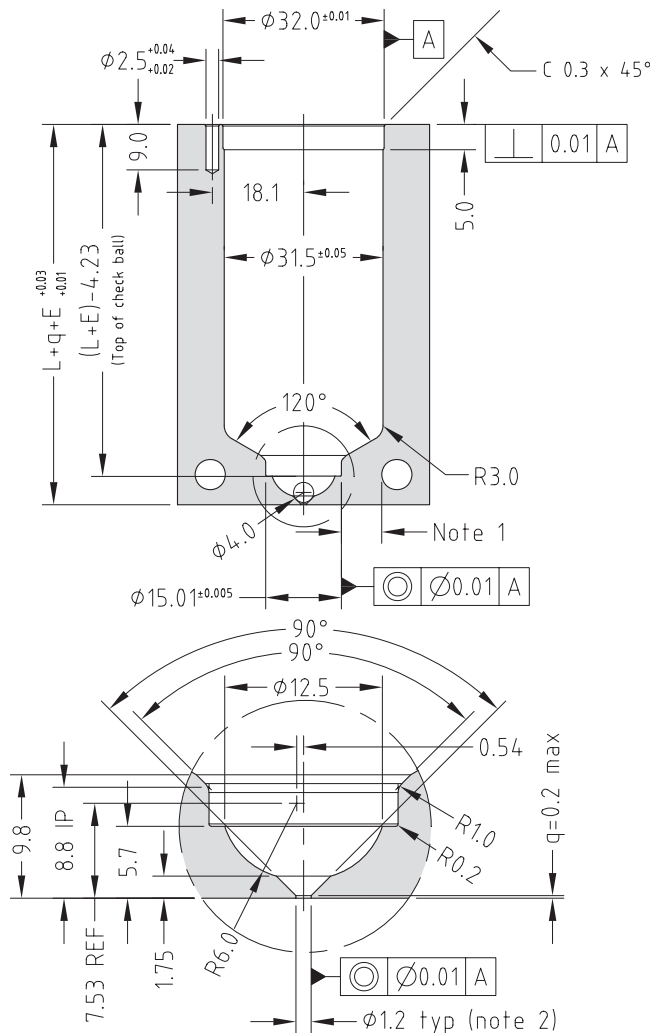
Nozzle Dimensions



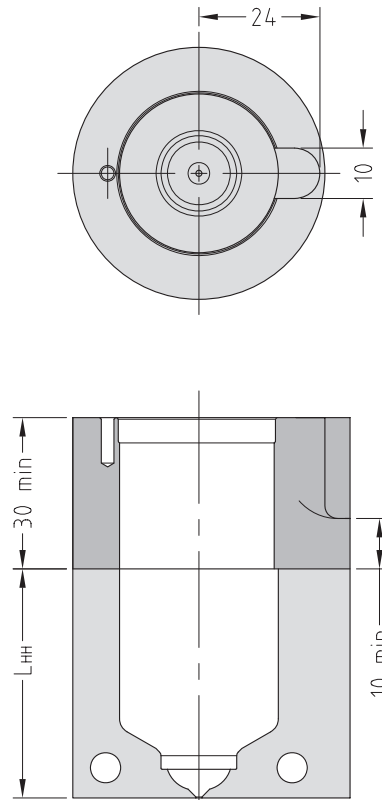
Multi-hole Torpedo Tip Nozzle Code	One-hole Torpedo Tip Nozzle Code	Open Tip Nozzle Code	L	E@ΔT =200C	E@ΔT =250C
MXTT19055	MXIT19055	MXOT19055	55	0.15	0.18
MXTT19065	MXIT19065	MXOT19065	65	0.17	0.21
MXTT19075	MXIT19075	MXOT19075	75	0.20	0.25
MXTT19095	MXIT19095	MXOT19095	95	0.25	0.31
MXTT19115	MXIT19115	MXOT19115	115	0.30	0.38
MXTT19145	MXIT19145	MXOT19145	145	0.38	0.48
MXTT19175	MXIT19175	MXOT19175	175	0.46	0.58

Nozzle Fit and Gate Dimensions

$E = L \times 0.0000132 \times (\text{nozzle temp. } ^\circ\text{C} - \text{mould temp. } ^\circ\text{C})$



Hot Half Configuration



Note

1. Gate cooling is critical for correct operation and gate quality. → See Cooling Section in the Technical Specifications.
 2. Modify gate diameter and land to suit the part. → See Gate Modifications in the Technical Specifications.
- * Minimum strength (σ_y) of nozzle plate 800MPa.

Tip and Material Grade Availability

Tip (Code)	G1	G2	G5
Multi-hole Torpedo Tip (X 19 TT)	✓	✓	✓
One-hole Torpedo Tip (X 19 IT)	✓	✓	✓
Open Tip (X 19 OT)	✓	✗	✓

Bush Nut Options

- BN - Standard bush nut
- BE - Full-contact bush nut*

The nozzle codes listed to the right are for nozzle assemblies with a standard bush nut. To order a full-contact bush nut, replace the BN in the code with BE.

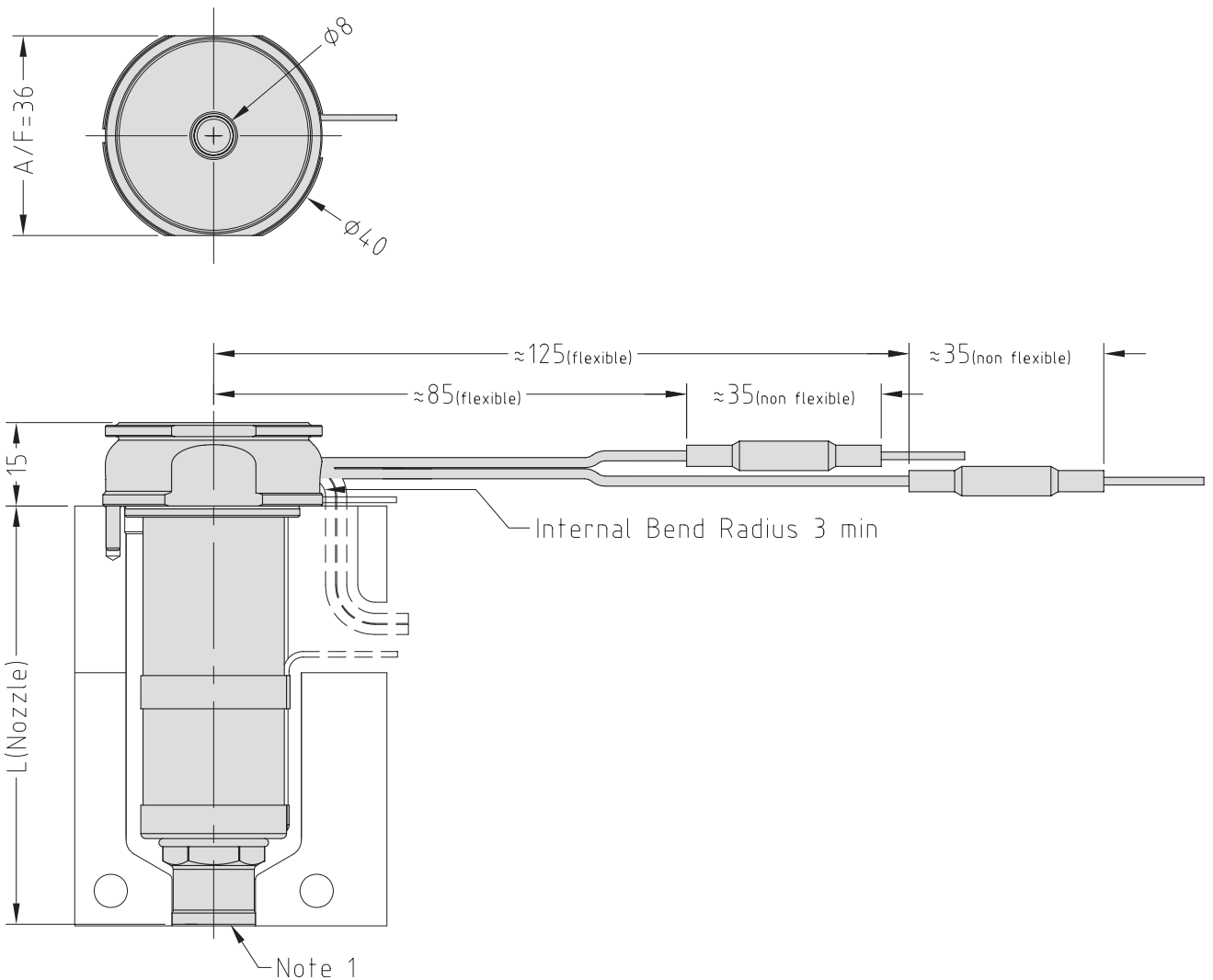
To order a nozzle assembly:

Provide the Nozzle Code + Grade
(Order example: MXIBN19175 G5)

To order a tip:

Provide the Tip Code + Grade
(Order example: X 19 IT G5)

Nozzle Dimensions



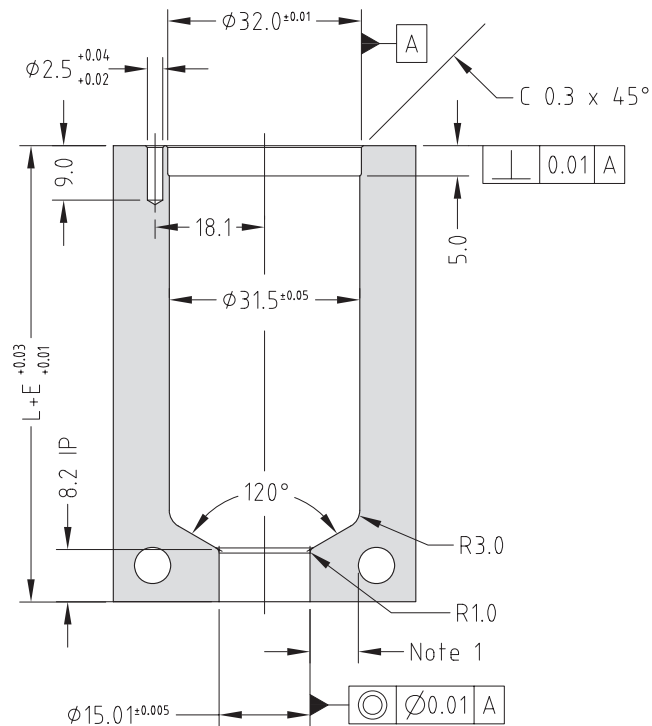
Note

1. Modify the contact area to suit the application.
→ See Gate Modifications and Cooling sections in the Technical Specifications.

Multi-hole Torpedo Tip Nozzle Code	One-hole Torpedo Tip Nozzle Code	Open Tip Nozzle Code	L	$E\Delta T$ =200C	$E\Delta T$ =250C
MXTBN19055	MXIBN19055	MXOBN19055	55.2	0.15	0.18
MXTBN19065	MXIBN19065	MXOBN19065	65.2	0.17	0.22
MXTBN19075	MXIBN19075	MXOBN19075	75.2	0.20	0.25
MXTBN19095	MXIBN19095	MXOBN19095	95.2	0.25	0.31
MXTBN19115	MXIBN19115	MXOBN19115	115.2	0.30	0.38
MXTBN19145	MXIBN19145	MXOBN19145	145.2	0.38	0.48
MXTBN19175	MXIBN19175	MXOBN19175	175.2	0.46	0.58

Nozzle Fitment Dimensions

$$E = L \times 0.0000132 \times (\text{nozzle temp. } ^\circ\text{C} - \text{mould temp. } ^\circ\text{C})$$



Note

- Gate cooling is critical for correct operation and gate quality. → See Cooling Section in the Technical Specifications.
 - Modify gate diameter and land to suit the part. Supplied with $\varnothing 1.2$ → See Gate Modifications in the Technical Specifications.
- * Minimum strength (σ_y) of nozzle plate 800MPa.
 ** Hot half configurations are not recommended for bush nut nozzles.

Tip and Material Grade Availability

Tip (Code)	G1	G2	G5
Multi-hole Torpedo Tip (X 19 TT)	✓	✓	✓
One-hole Torpedo Tip (X 19 IT)	✓	✓	✓
Open Tip (X 19 OT)	✓	✗	✓

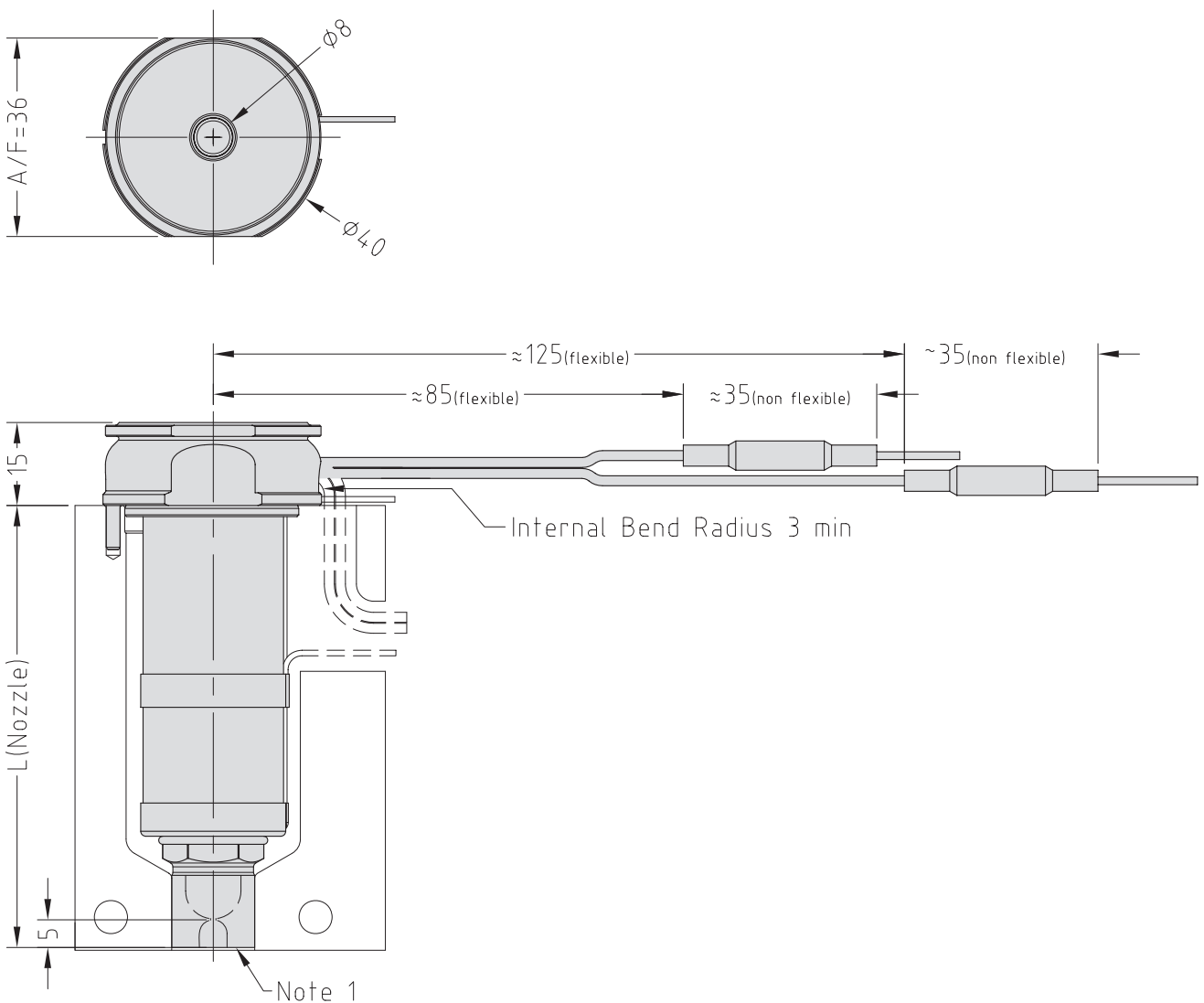
To order a nozzle assembly:

Provide the Nozzle Code + Grade
 (Order example: MXISN19175 G5)

To order a tip:

Provide the Tip Code + Grade
 (Order example: X 19 IT G5)

Nozzle Dimensions



Note

1. Modify the contact area and the sprue nut to suit the application.
 → See Gate Modifications and Cooling sections in the Technical Specifications.

Tip and Material Grade Availability

Tip (Code)	G1	G2	G5
Multi-hole Torpedo Tip (X 19 TT)	✓	✓	✓
One-hole Torpedo Tip (X 19 IT)	✓	✓	✓
Open Tip (X 19 OT)	✓	✗	✓

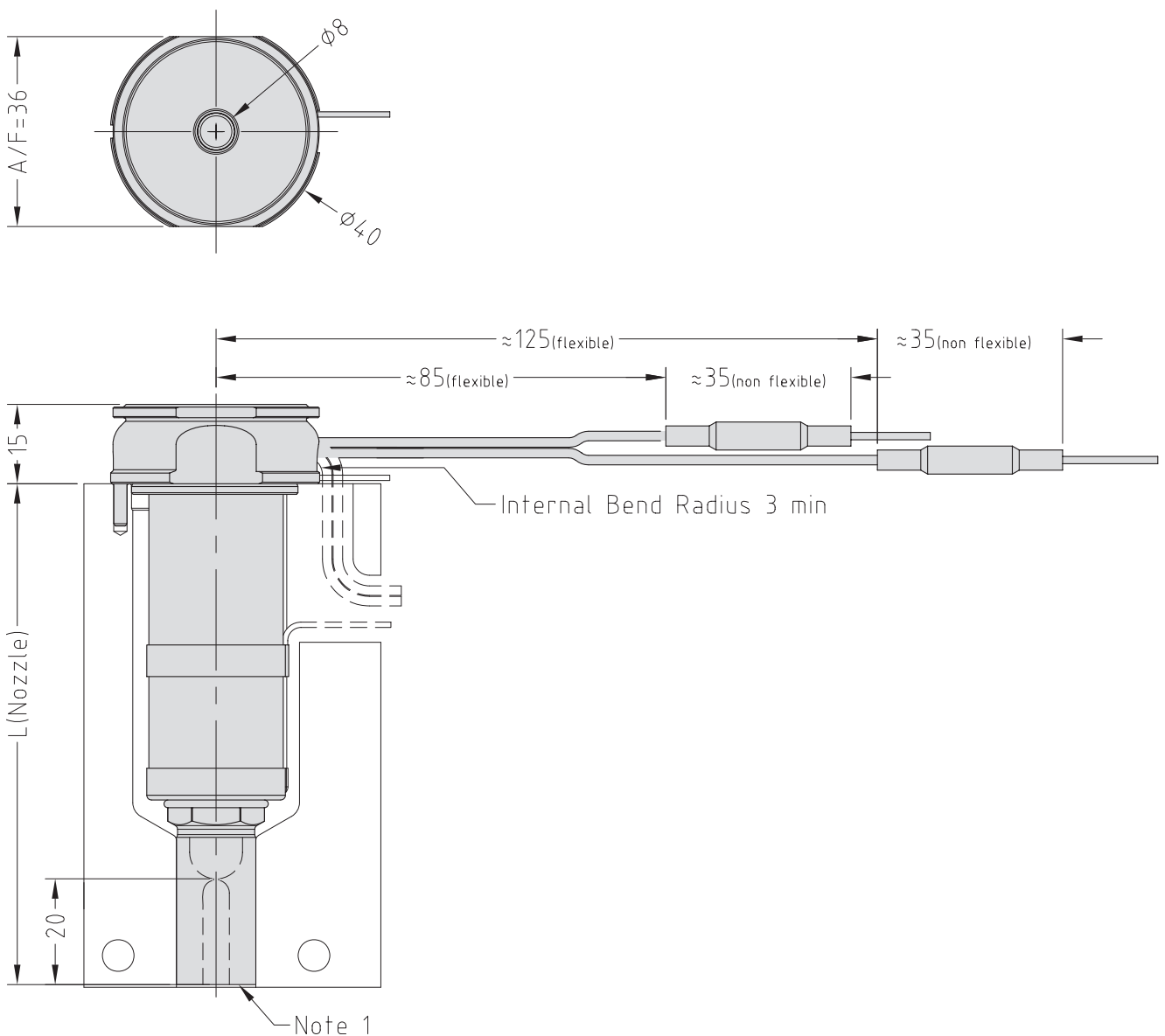
To order a nozzle assembly:

Provide the Nozzle Code + Grade
 (Order example: MXISX19175 G5)

To order a tip:

Provide the Tip Code + Grade
 (Order example: X 19 IT G5)

Nozzle Dimensions



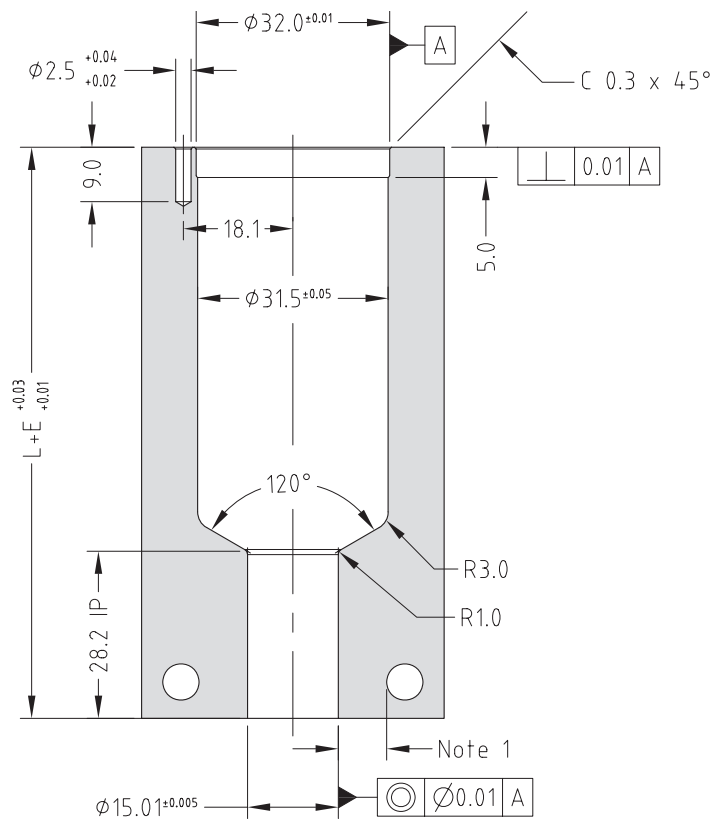
Note

1. Modify the contact area and the sprue nut to suit the application.
 → See Gate Modifications and Cooling sections in the Technical Specifications.

Multi-hole Torpedo Tip Nozzle Code	One-hole Torpedo Tip Nozzle Code	Open Tip Nozzle Code	L	$E\Delta T$ =200C	$E\Delta T$ =250C
MXTSX19055	MXISX19055	MXOSX19055	75.2	0.20	0.25
MXTSX19065	MXISX19065	MXOSX19065	85.2	0.23	0.28
MXTSX19075	MXISX19075	MXOSX19075	95.2	0.25	0.31
MXTSX19095	MXISX19095	MXOSX19095	115.2	0.30	0.38
MXTSX19115	MXISX19115	MXOSX19115	135.2	0.36	0.45
MXTSX19145	MXISX19145	MXOSX19145	165.2	0.44	0.55
MXTSX19175	MXISX19175	MXOSX19175	195.2	0.52	0.64

Nozzle Fitment and Gate Dimensions

$$E = L \times 0.0000132 \times (\text{nozzle temp. } ^\circ\text{C} - \text{mould temp. } ^\circ\text{C})$$



Note

- Gate cooling is critical for correct operation and gate quality. → See Cooling Section in the Technical Specifications.
 - Modify gate diameter and land to suit the part. Supplied with $\phi 1.2$ → See Gate Modifications in the Technical Specifications.
- * Minimum strength (σ_y) of nozzle plate 800MPa.
 ** Hot half configurations are not recommended for sprue nut nozzles.

Tip and Material Grade Availability

Tip (Code)	G1	G2	G5
Multi-hole Torpedo Tip (X 19 TT)	✓	✓	✓
One-hole Torpedo Tip (X 19 IT)	✓	✓	✓
Open Tip (X 19 OT)	✓	✗	✓

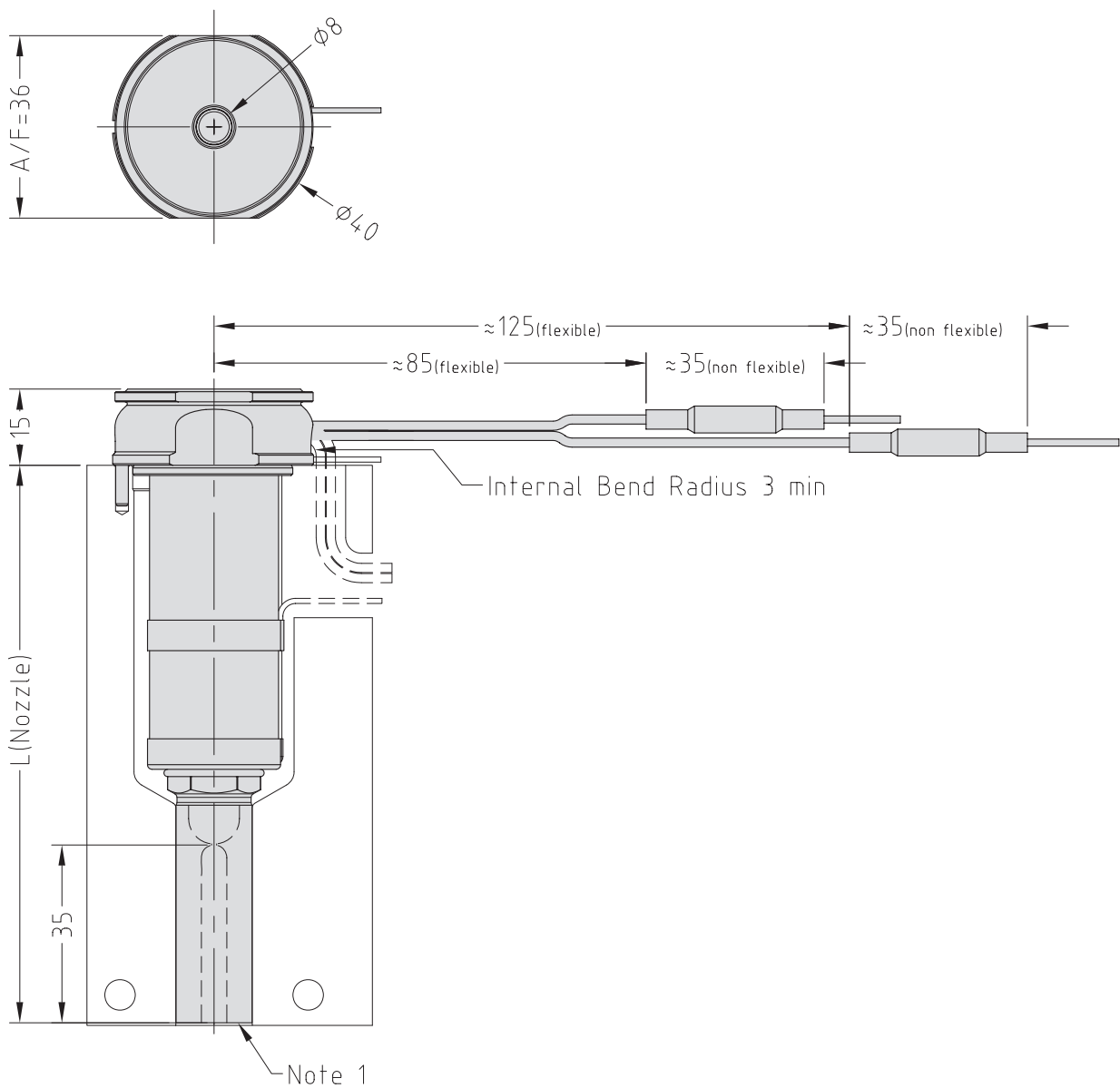
To order a nozzle assembly:

Provide the Nozzle Code + Grade
 (Order example: MXISL19175 G5)

To order a tip:

Provide the Tip Code + Grade
 (Order example: X 19 IT G5)

Nozzle Dimensions



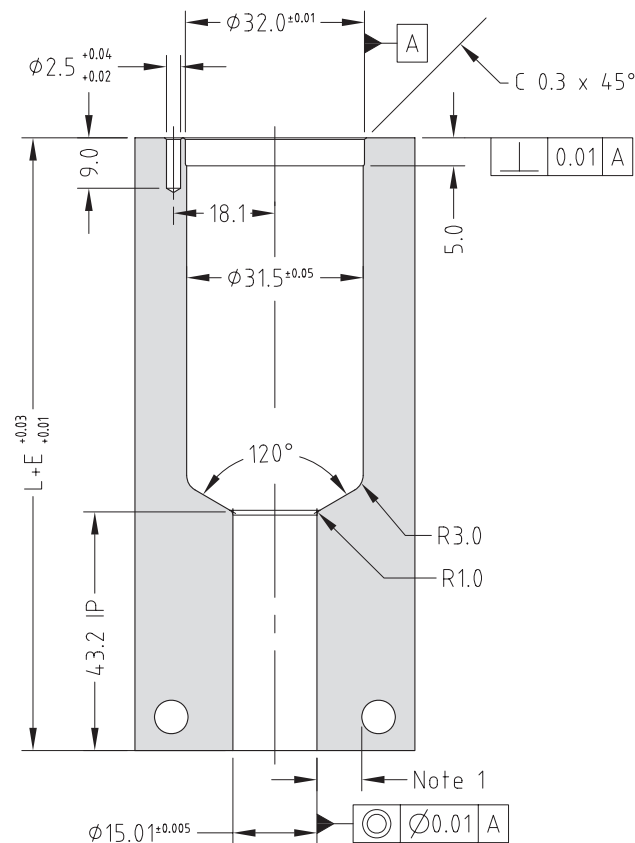
Note

1. Modify the contact area and the sprue nut to suit the application.
 → See Gate Modifications and Cooling sections in the Technical Specifications.

Multi-hole Torpedo Tip Nozzle Code	One-hole Torpedo Tip Nozzle Code	Open Tip Nozzle Code	L	$E\Delta T$ =200C	$E\Delta T$ =250C
MXTSL19055	MXISL19055	MXOSL19055	90.2	0.24	0.30
MXTSL19065	MXISL19065	MXOSL19065	100.2	0.26	0.33
MXTSL19075	MXISL19075	MXOSL19075	110.2	0.29	0.36
MXTSL19095	MXISL19095	MXOSL19095	130.2	0.34	0.43
MXTSL19115	MXISL19115	MXOSL19115	150.2	0.40	0.50
MXTSL19145	MXISL19145	MXOSL19145	180.2	0.48	0.59
MXTSL19175	MXISL19175	MXOSL19175	210.2	0.55	0.69

Nozzle Fitment and Gate Dimensions

$$E = L \times 0.0000132 \times (\text{nozzle temp. } ^\circ\text{C} - \text{mould temp. } ^\circ\text{C})$$



Note

- Gate cooling is critical for correct operation and gate quality. → See Cooling Section in the Technical Specifications.
 - Modify gate diameter and land to suit the part. Supplied with $\phi 1.2$ → See Gate Modifications in the Technical Specifications.
- * Minimum strength (σ_y) of nozzle plate 800MPa.
 ** Hot half configurations are not recommended for sprue nut nozzles.

Tip and Material Grade Availability

Tip (Code)	G1	G2	G5
Multi-hole Torpedo Tip (X 19 TT+5)	✓	✓	✗
One-hole Torpedo Tip (X 1 IT+5)	✓	✓	✗
Open Tip	✗	✗	✗

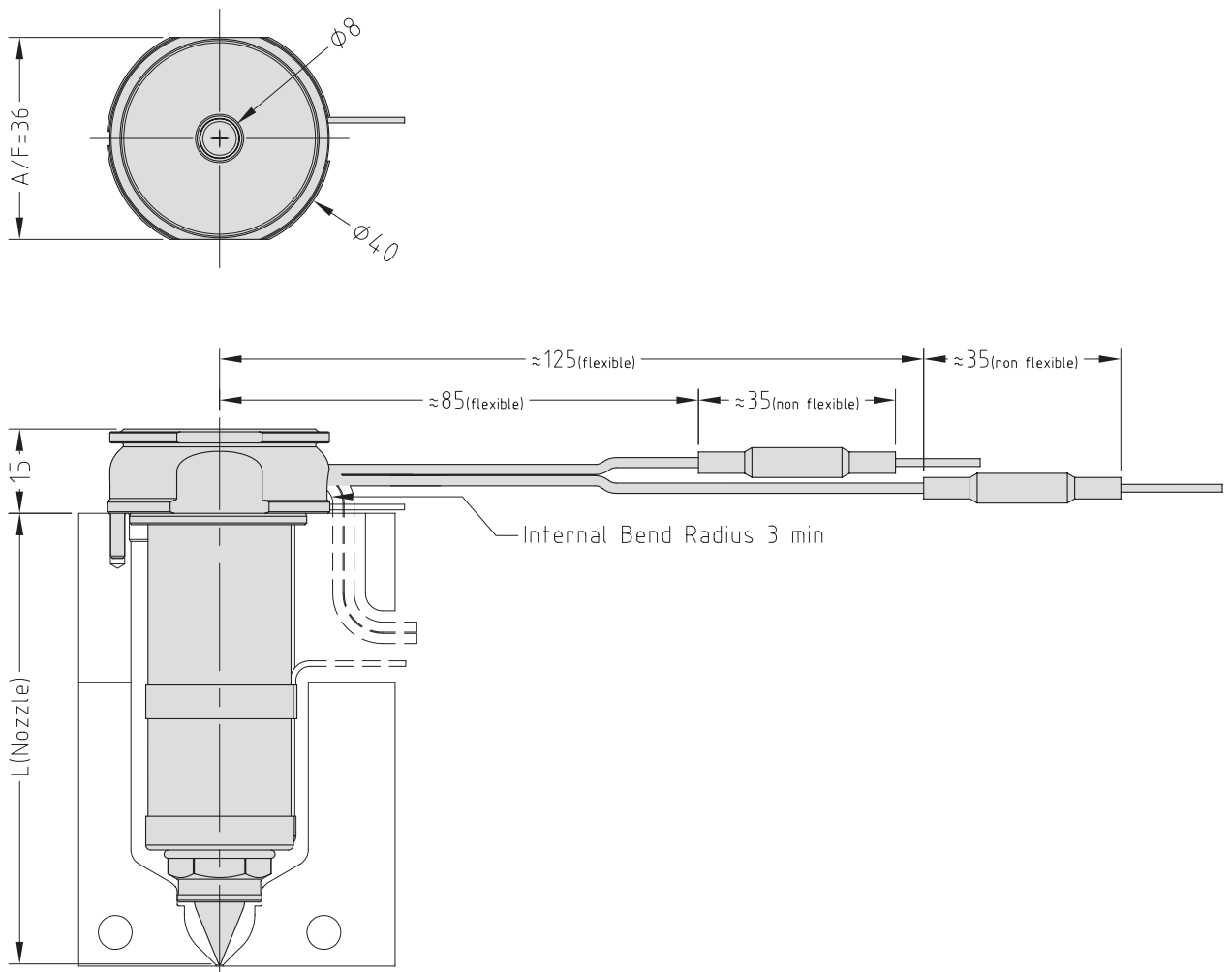
To order a nozzle assembly:

Provide the Nozzle Code + Grade
(Order example: MXIT19175+5 G1)

To order a tip:

Provide the Tip Code + Grade
(Order example: X 19 IT+5 G1)

Nozzle Dimensions



Tip and Material Grade Availability

Tip (Code)	G1	G2	G5
Multi-hole Torpedo Tip (X 19 TT+10)	✓	✓	✗
One-hole Torpedo Tip (X 1 IT+10)	✓	✓	✗
Open Tip	✗	✗	✗

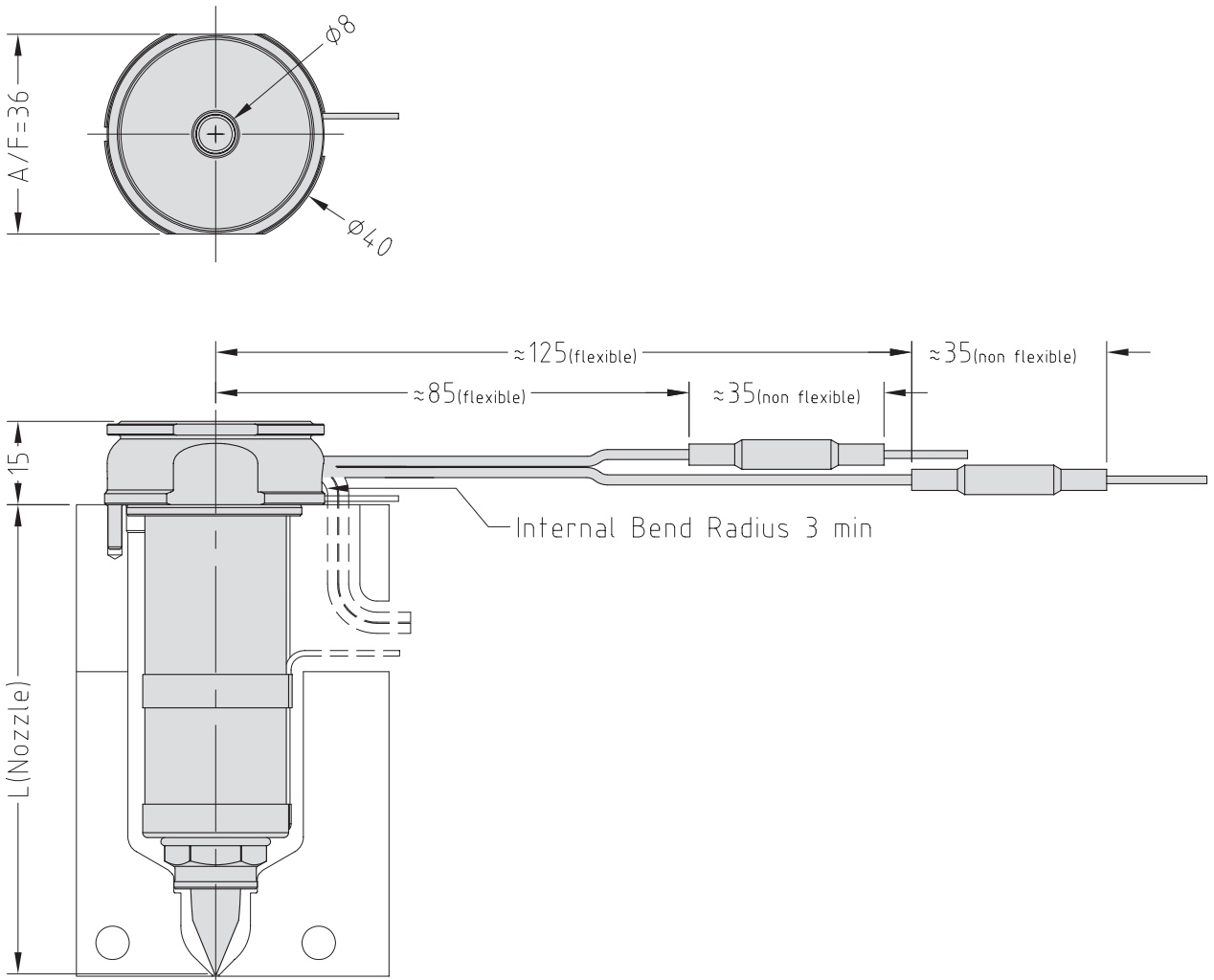
To order a nozzle assembly:

Provide the Nozzle Code + Grade
(Order example: MXIT19175+10 G1)

To order a tip:

Provide the Tip Code + Grade
(Order example: X 19 IT+10 G1)

Nozzle Dimensions

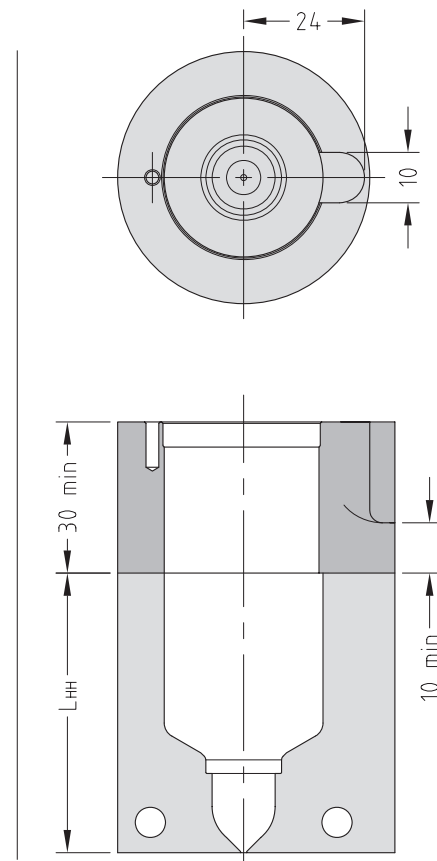
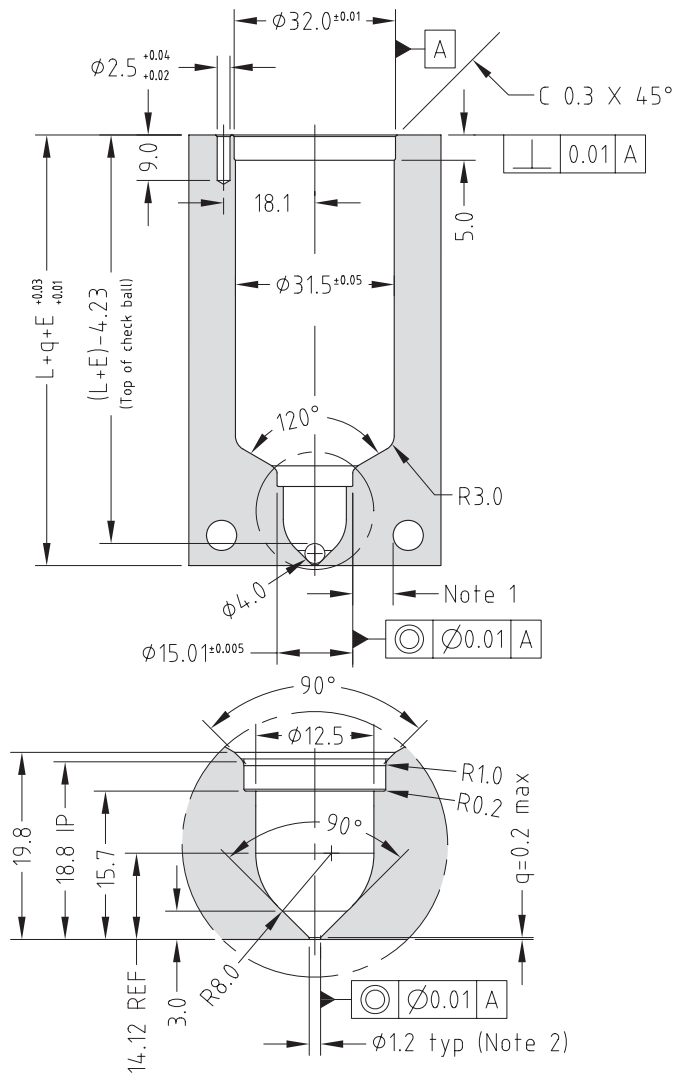


Multi-hole Torpedo Tip Nozzle Code	One-hole Torpedo Tip Nozzle Code	L	E@ΔT =200C	E@ΔT =250C
MXTT19055+10	MXIT19055+10	65	0.17	0.21
MXTT19065+10	MXIT19065+10	75	0.20	0.25
MXTT19075+10	MXIT19075+10	85	0.22	0.28
MXTT19095+10	MXIT19095+10	105	0.28	0.35
MXTT19115+10	MXIT19115+10	125	0.33	0.41
MXTT19145+10	MXIT19145+10	155	0.41	0.51
MXTT19175+10	MXIT19175+10	185	0.49	0.61

Nozzle Fitment and Gate Dimensions

$E = L \times 0.0000132 \times (\text{nozzle temp. } ^\circ\text{C} - \text{mould temp. } ^\circ\text{C})$

Hot Half Configuration



Note

- Gate cooling is critical for correct operation and gate quality. → See Cooling Section in the Technical Specifications.
 - Modify gate diameter and land to suit the part. → See Gate Modifications in the Technical Specifications.
- * Minimum strength (σ_y) of nozzle plate 800MPa.

Mastip Head Office New Zealand

558 Rosebank Road
Avondale 1026, Auckland
PO Box 90-651
Victoria Street West
Auckland 1142
New Zealand
Phone: +64 9 970 2100
Fax: +64 9 970 2070
Email: mastip@mastip.com

Mastip Regional Office Europe

Phone: +33 4 724 72 800
Fax: +33 4 724 72 801
Email: europe@mastip.com

Mastip Regional Office China

Phone: +86 21 644 77838
Fax: +86 21 644 77828
Email: china@mastip.com

Mastip Regional Office North America

Phone: +1 262 644 9400
Fax: +1 262 644 9402
Email: northamerica@mastip.com

40-000-023 V1.03

