

MXTG13



smart hot runner solutions

www.mastip.com

Tip and Material Grade Availability

Tip (Code)	G1	G2	G5
Multi-hole Torpedo Tip (X 13 TT)	✓	✓	✓
One-hole Torpedo Tip (X 13 IT)	✓	✓	✓
Open Tip (X 13 OT)	✓	✗	✗

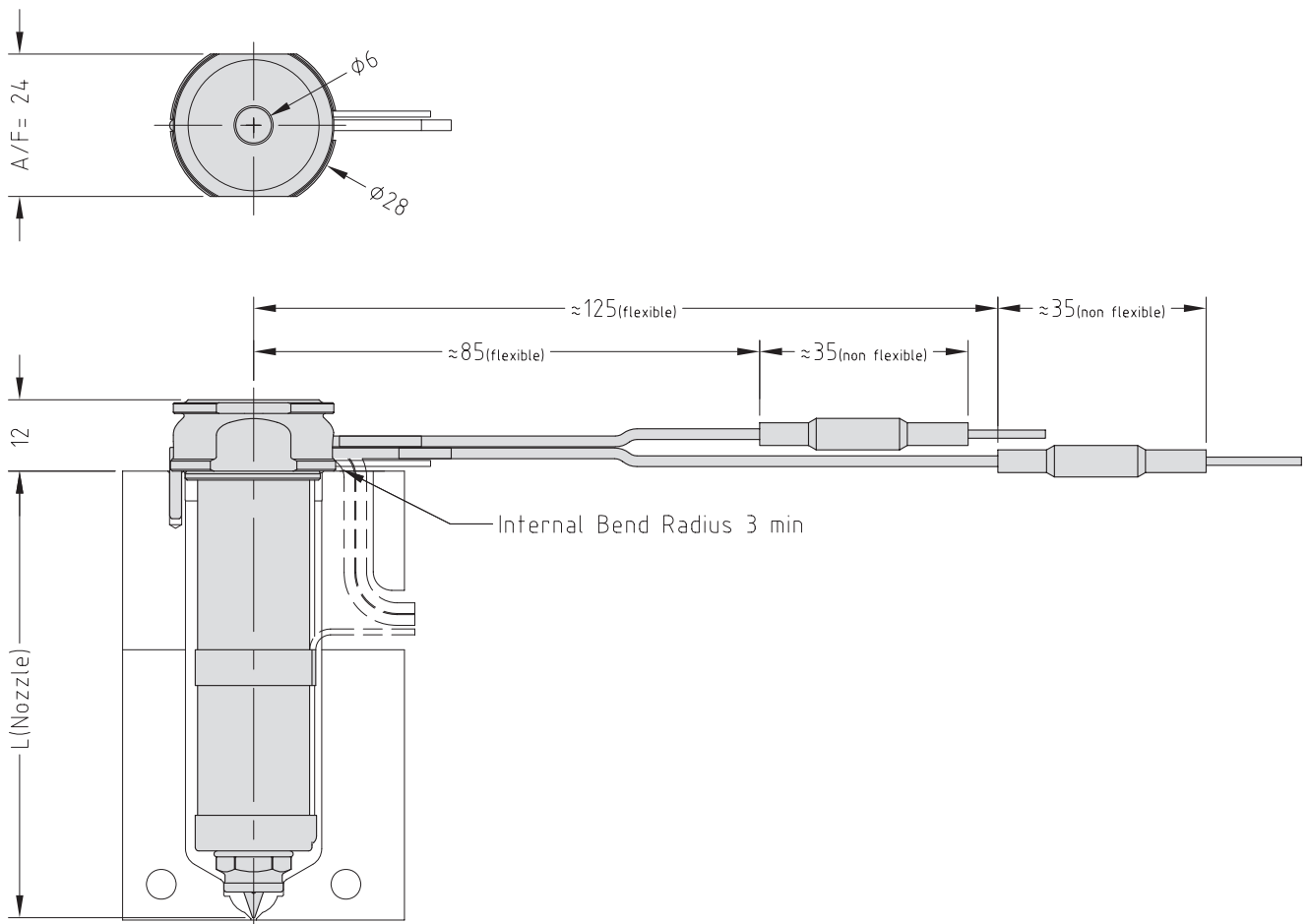
To order a nozzle assembly:

Provide the Nozzle Code + Grade
 (Order example: MXIT13175 G5)

To order a tip:

Provide the Tip Code + Grade
 (Order example: X 13 IT G5)

Nozzle Dimensions



Tip and Material Grade Availability

Tip (Code)	G1	G2	G5
Multi-hole Torpedo Tip (X 13 TT)	✓	✓	✓
One-hole Torpedo Tip (X 13 IT)	✓	✓	✓
Open Tip (X 13 OT)	✓	✗	✗

Bush Nut Options

- BN - Standard bush nut
- BE - Full-contact bush nut*

The nozzle codes listed to the right are for nozzle assemblies with a standard bush nut. To order a full-contact bush nut, replace the BN in the code with BE.

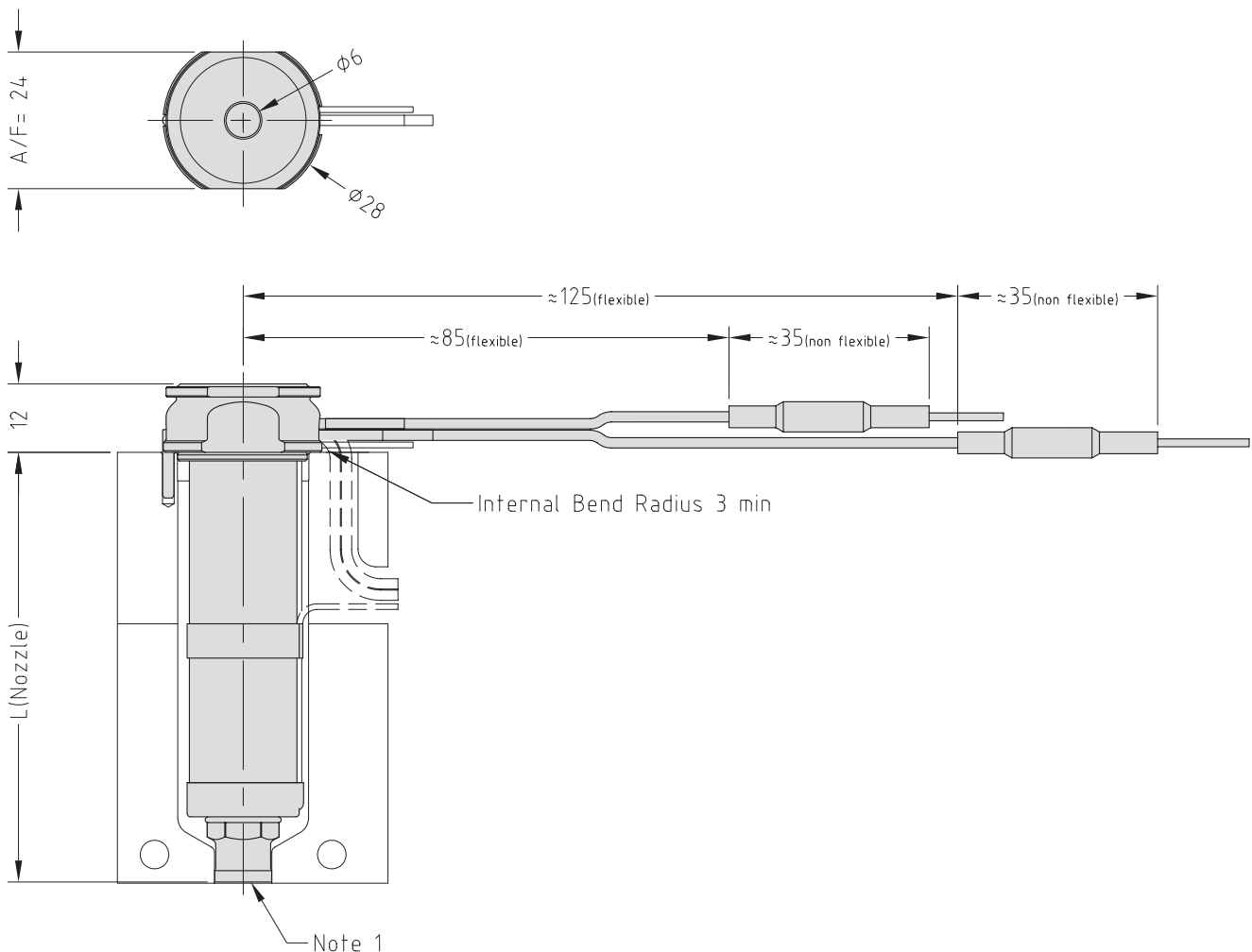
To order a nozzle assembly:

Provide the Nozzle Code + Grade
(Order example: MXIBN13175 G5)

To order a tip:

Provide the Tip Code + Grade
(Order example: X 13 IT G5)

Nozzle Dimensions



Note

1. Modify the contact area to suit the application.

→ See Gate Modifications and Cooling sections in the Technical Specifications.

Tip and Material Grade Availability

Tip (Code)	G1	G2	G5
Multi-hole Torpedo Tip (X 13 TT)	✓	✓	✓
One-hole Torpedo Tip (X 13 IT)	✓	✓	✓
Open Tip (X 13 OT)	✓	✗	✗

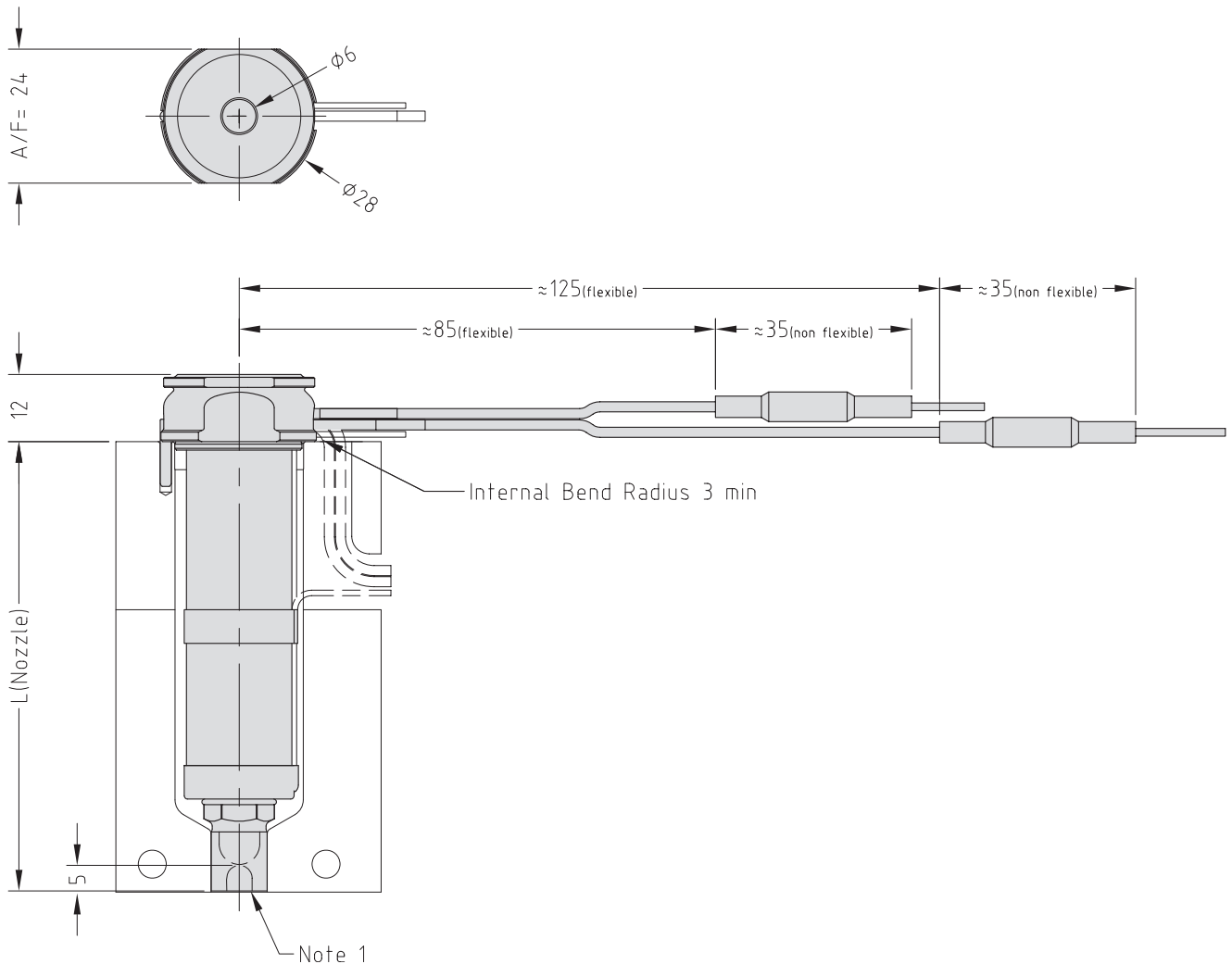
To order a nozzle assembly:

Provide the Nozzle Code + Grade
 (Order example: MXISN13175 G5)

To order a tip:

Provide the Tip Code + Grade
 (Order example: X 13 IT G5)

Nozzle Dimensions



Note

1. Modify the contact area and the sprue nut to suit the application.
 → See Gate Modifications and Cooling sections in the Technical Specifications.

Tip and Material Grade Availability

Tip (Code)	G1	G2	G5
Multi-hole Torpedo Tip (X 13 TT)	✓	✓	✓
One-hole Torpedo Tip (X 13 IT)	✓	✓	✓
Open Tip (X 13 OT)	✓	✗	✗

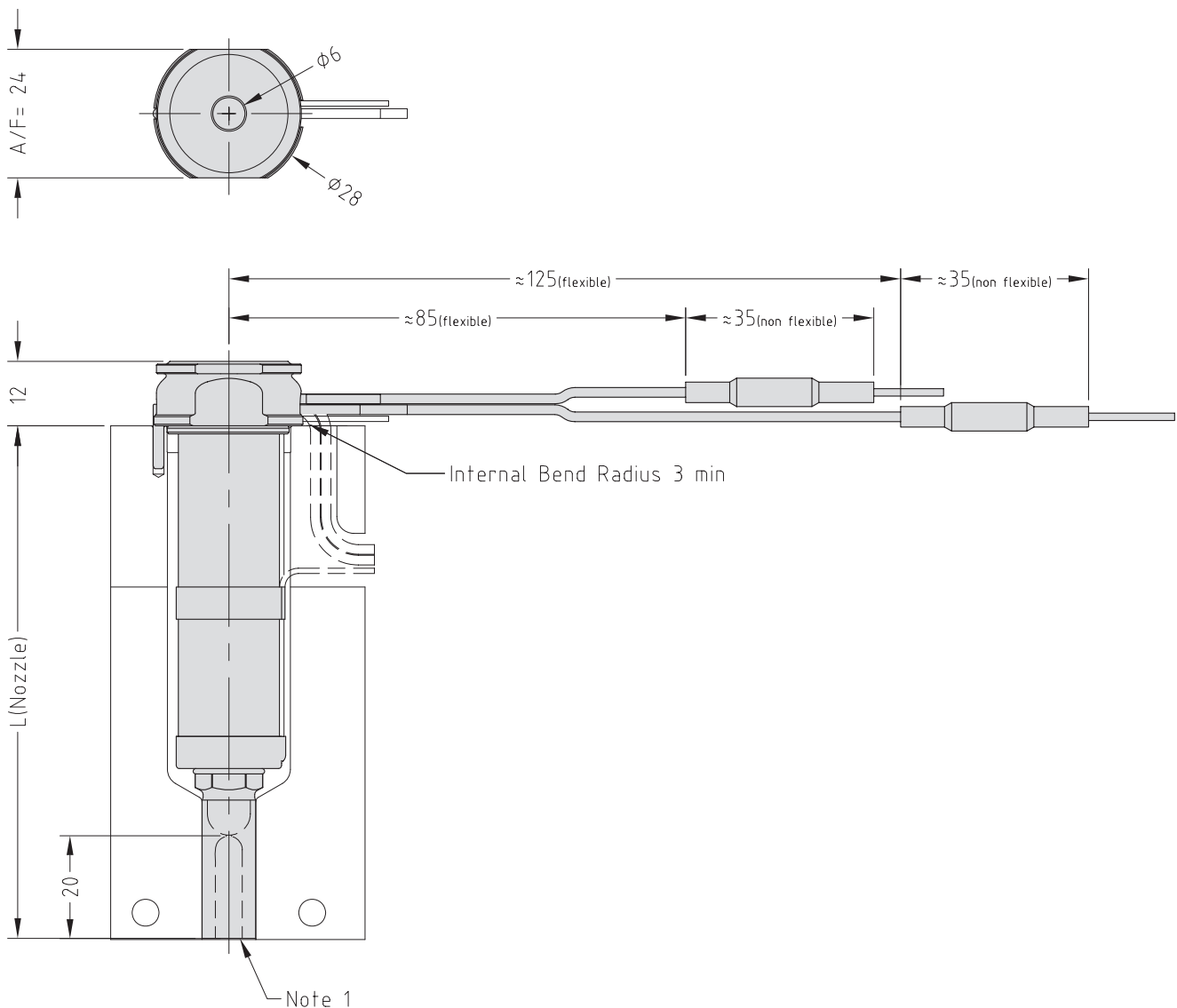
To order a nozzle assembly:

Provide the Nozzle Code + Grade
(Order example: MXISX13175 G5)

To order a tip:

Provide the Tip Code + Grade
(Order example: X 13 IT G5)

Nozzle Dimensions



Note

1. Modify the contact area and the sprue nut to suit the application.
→ See Gate Modifications and Cooling sections in the Technical Specifications.

Tip and Material Grade Availability

Tip (Code)	G1	G2	G5
Multi-hole Torpedo Tip (X 13 TT)	✓	✓	✓
One-hole Torpedo Tip (X 13 IT)	✓	✓	✓
Open Tip (X 13 OT)	✓	✗	✗

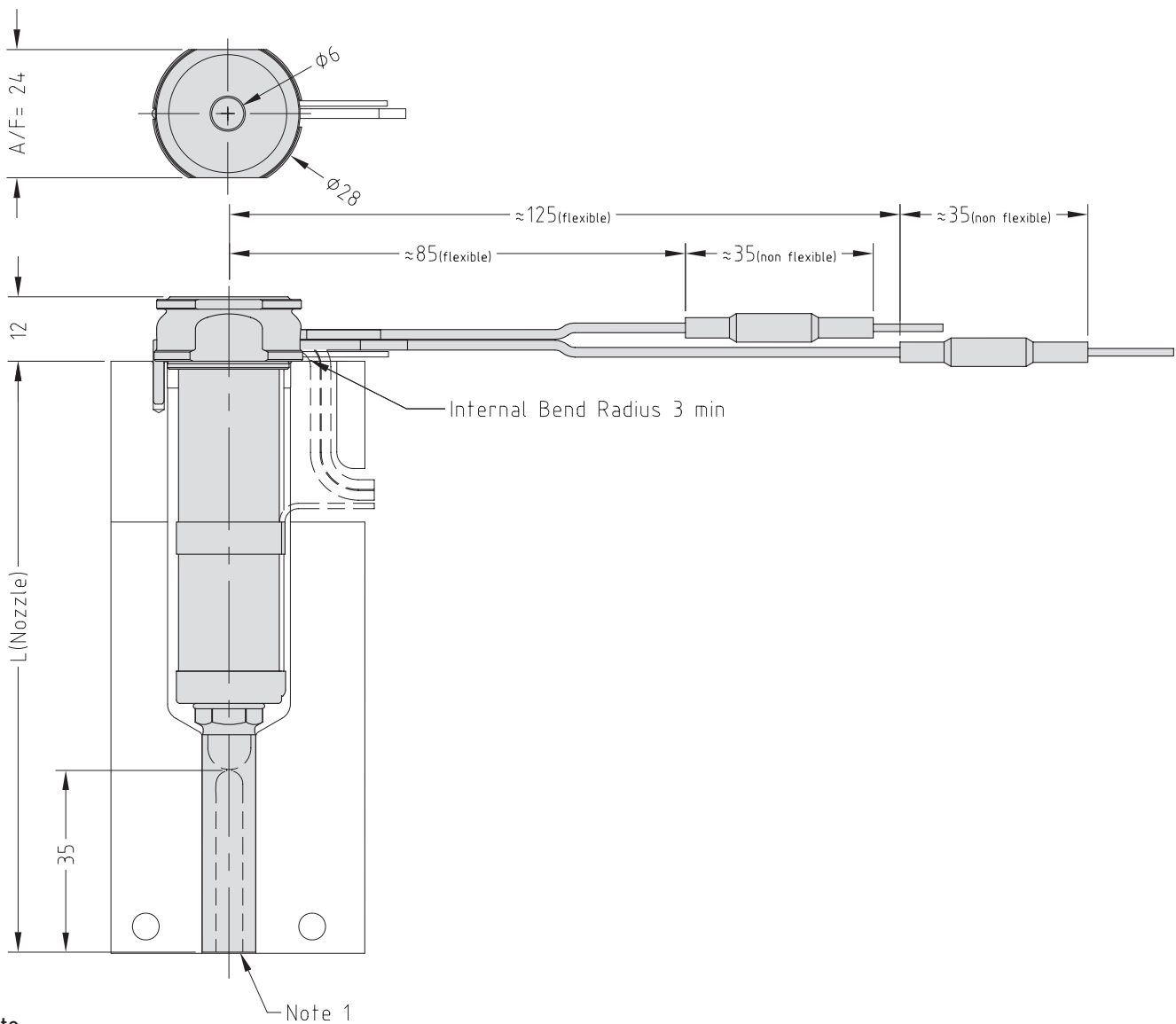
To order a nozzle assembly:

Provide the Nozzle Code + Grade
(Order example: MXISL13175 G5)

To order a tip:

provide the Tip Code + Grade
(Order example: X 13 IT G5)

Nozzle Dimensions



Note

1. Modify the contact area and the sprue nut to suit the application.
→ See Gate Modifications and Cooling sections in the Technical Specifications.

Tip and Material Grade Availability

Tip (Code)	G1	G2	G5
Multi-hole Torpedo Tip (X 13 TT+5)	✓	✓	✗
One-hole Torpedo Tip (X 13 IT+5)	✓	✓	✗
Open Tip	✗	✗	✗

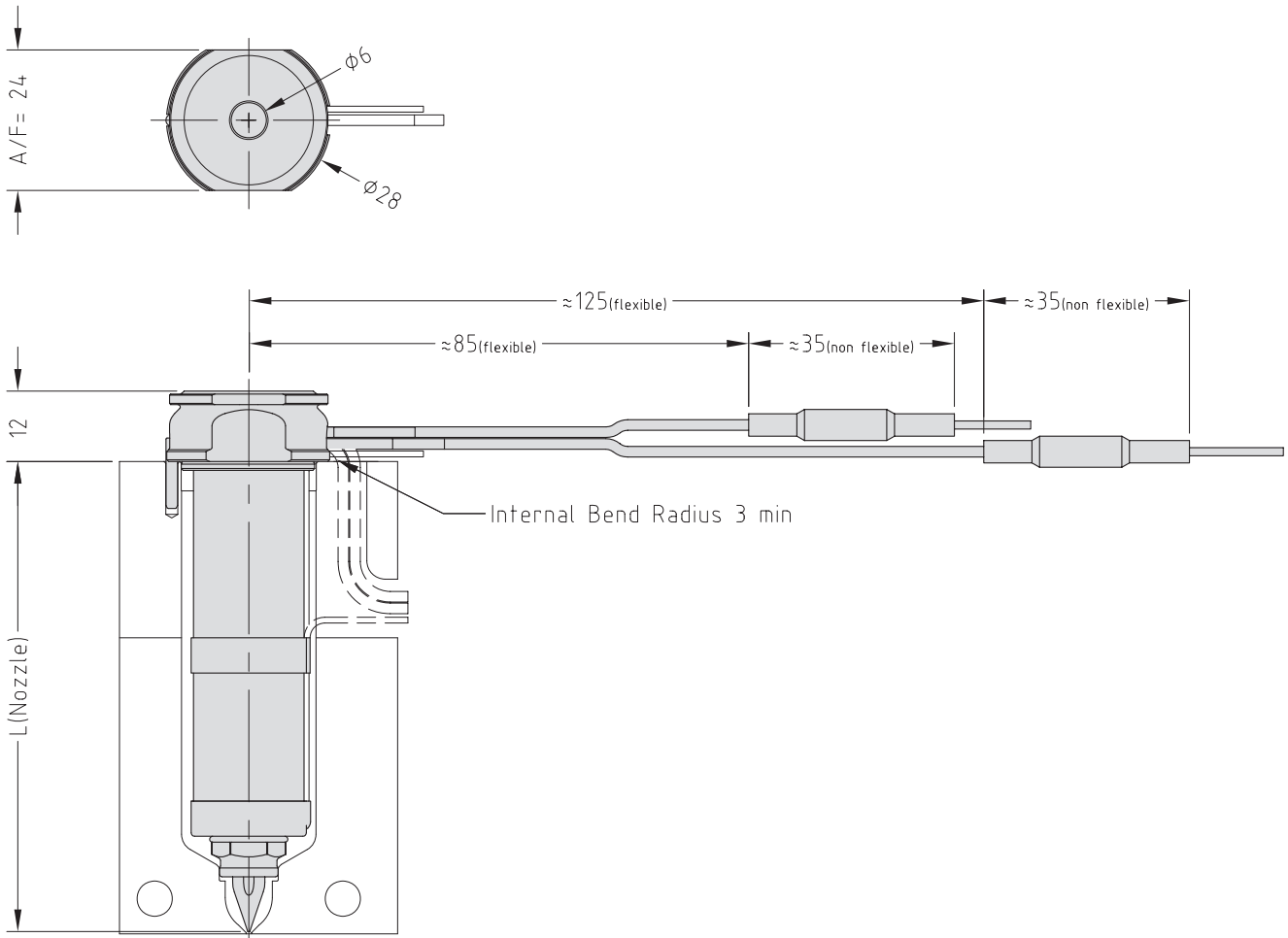
To order a nozzle assembly:

Provide the Nozzle Code + Grade
(Order example: MXIT13175+5 G1)

To order a tip:

Provide the Tip Code + Grade
(Order example: X 13 IT+5 G1)

Nozzle Dimensions



Tip and Material Grade Availability

Tip (Code)	G1	G2	G5
Multi-hole Torpedo Tip (X 13 TT+10)	✓	✓	✗
One-hole Torpedo Tip (X 13 IT+10)	✓	✓	✗
Open Tip	✗	✗	✗

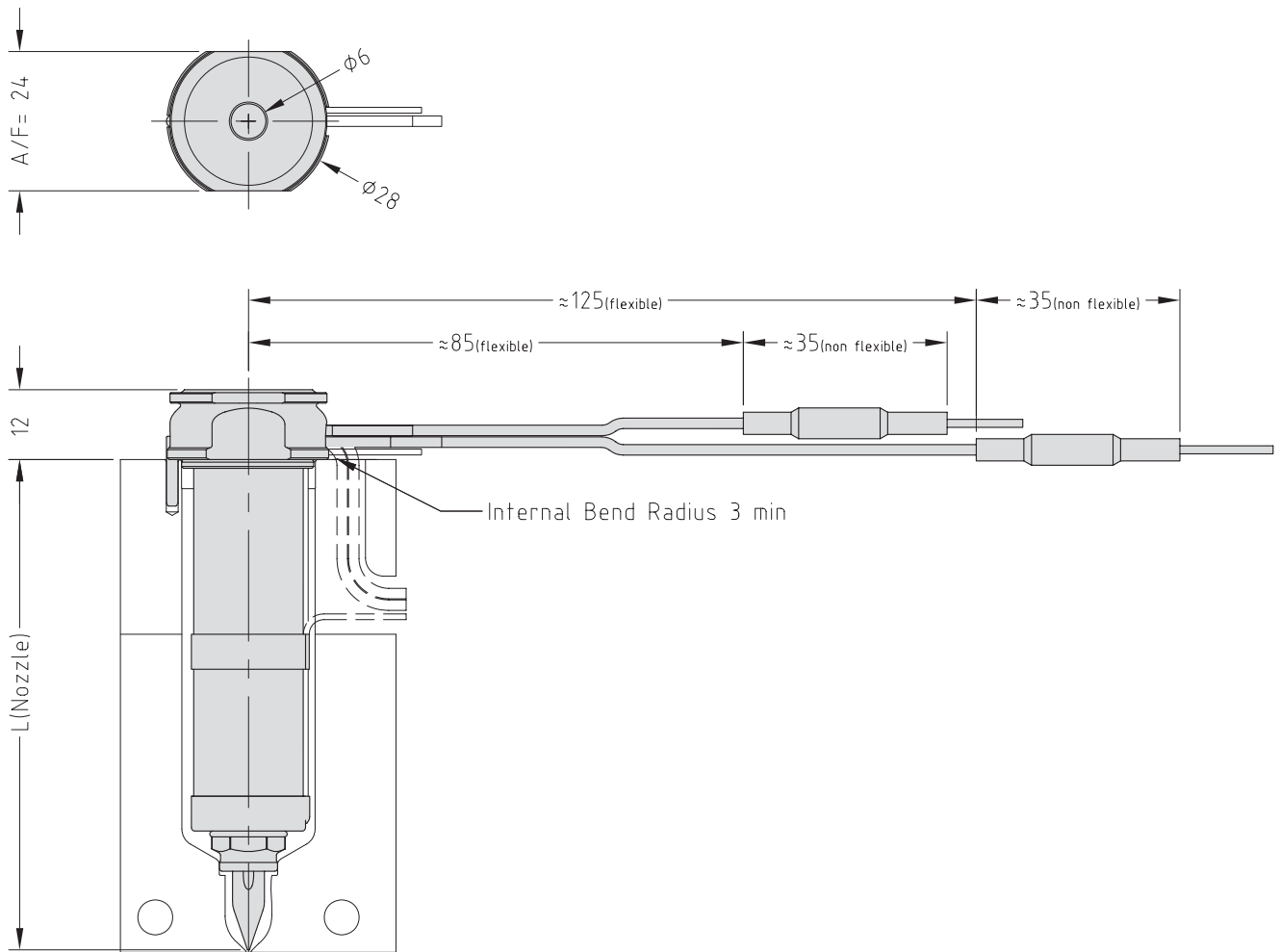
To order a nozzle assembly:

Provide the Nozzle Code + Grade
(Order example: MXIT13175+10 G1)

To order a tip:

Provide the Tip Code + Grade
(Order example: X 13 IT+10 G1)

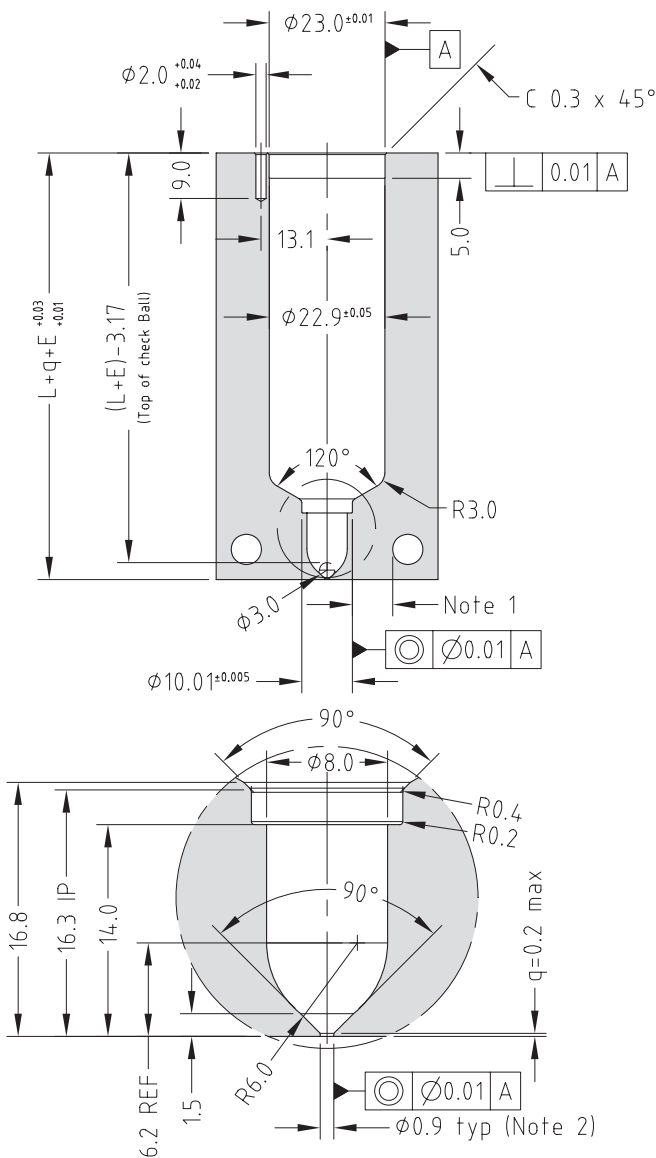
Nozzle Dimensions



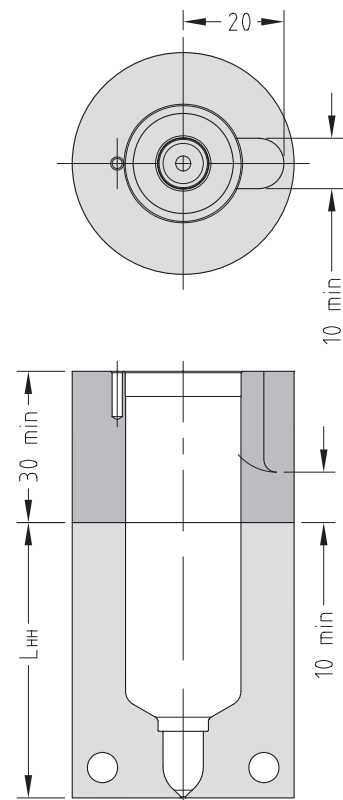
Multi-hole Torpedo Tip Nozzle Code	One-hole Torpedo Tip Nozzle Code	L	E@ΔT =200C	E@ΔT =250C
MXTT13045+10	MXIT13045+10	55	0.15	0.18
MXTT13055+10	MXIT13055+10	65	0.17	0.21
MXTT13065+10	MXIT13065+10	75	0.20	0.25
MXTT13075+10	MXIT13075+10	85	0.22	0.28
MXTT13095+10	MXIT13095+10	105	0.28	0.35
MXTT13115+10	MXIT13115+10	125	0.33	0.41
MXTT13145+10	MXIT13145+10	155	0.41	0.51
MXTT13175+10	MXIT13175+10	185	0.49	0.61

Nozzle Fitment and Gate Dimensions

$E = L \times 0.000132 \times (\text{nozzle temp. } ^\circ\text{C} - \text{mould temp. } ^\circ\text{C})$



Hot Half Configuration



Note

- Gate cooling is critical for correct operation and gate quality. → See Cooling section in the Technical Specifications.
 - Modify gate diameter and land to suit the part. → See Gate Modifications in the Technical Specifications.
- * Minimum strength (σ_y) of nozzle plate 800MPa.

Mastip Head Office New Zealand

558 Rosebank Road
Avondale 1026, Auckland
PO Box 90-651
Victoria Street West
Auckland 1142
New Zealand
Phone: +64 9 970 2100
Fax: +64 9 970 2070
Email: mastip@mastip.com

Mastip Regional Office Europe

Phone: +33 4 724 72 800
Fax: +33 4 724 72 801
Email: europe@mastip.com

Mastip Regional Office China

Phone: +86 21 644 77838
Fax: +86 21 644 77828
Email: china@mastip.com

Mastip Regional Office North America

Phone: +1 262 644 9400
Fax: +1 262 644 9402
Email: northamerica@mastip.com

40-000-003

V1.03

