

# SXTG13



smart hot runner solutions

[www.mastip.com](http://www.mastip.com)

Tip and Material Grade Availability

Tip (Code)	G1	G2	G5
Multi-hole Torpedo Tip (X 13 TT)	✓	✓	✓
One-hole Torpedo Tip (X 13 IT)	✓	✓	✓
Open Tip (X 13 OT)	✓	✗	✗

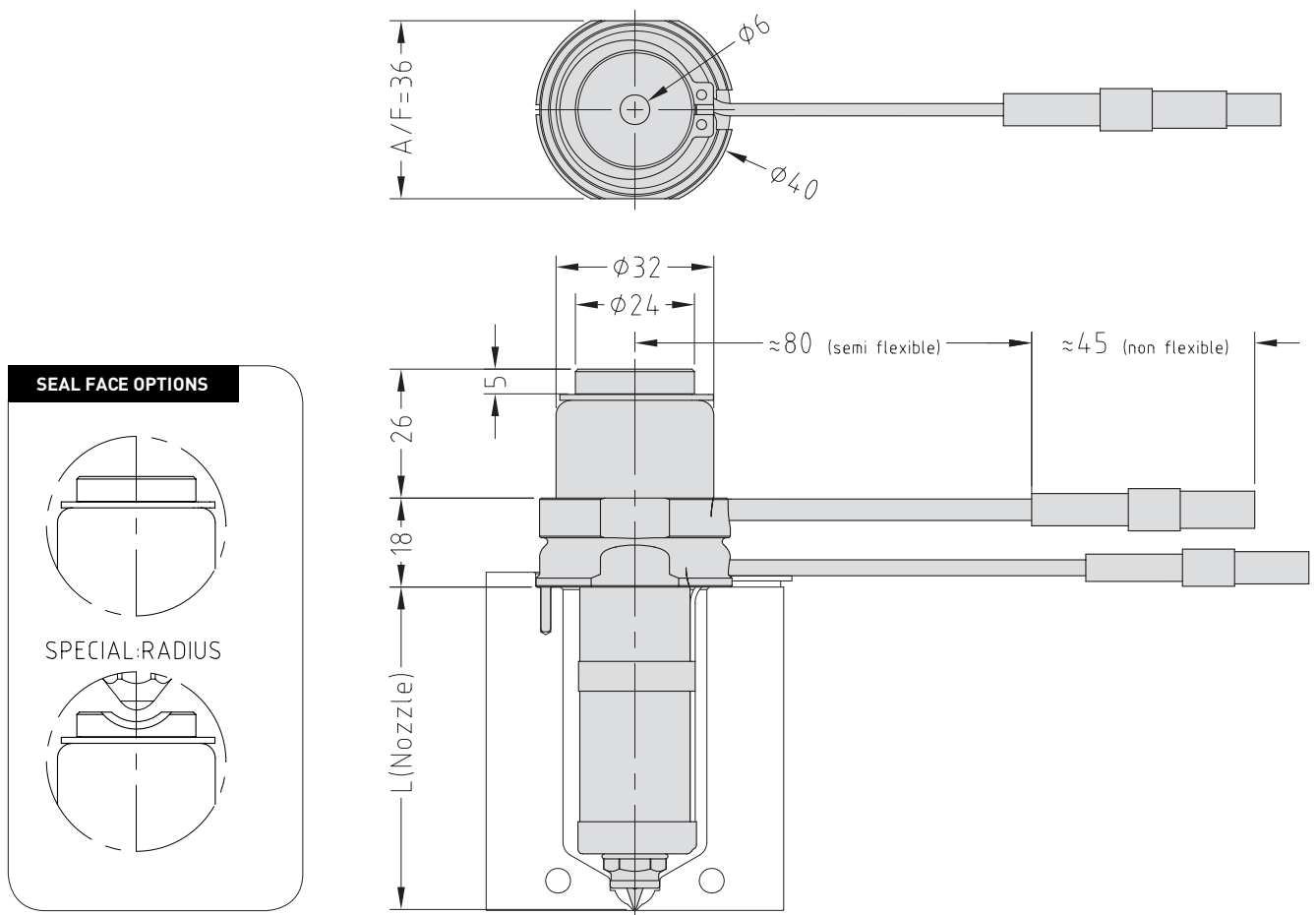
To order a nozzle assembly:

Provide the Nozzle Code + Grade  
 (Order example: SXIT13175 G5 Radius=0)

To order a tip:

Provide the Tip Code + Grade  
 (Order example: X 13 IT G5)

Nozzle Dimensions



Note

\* Before restarting the nozzle remove any residue plastic from nozzle seal face to avoid damaging the nozzle.



Tip and Material Grade Availability

Tip (Code)	G1	G2	G5
Multi-hole Torpedo Tip (X 13 TT)	✓	✓	✓
One-hole Torpedo Tip (X 13 IT)	✓	✓	✓
Open Tip (X 13 OT)	✓	✗	✗

Bush Nut Options

- BN - Standard bush nut
- BE - Full-contact bush nut\*

The nozzle codes listed to the right are for nozzle assemblies with a standard bush nut. To order a full-contact bush nut, replace the BN in the code with BE.

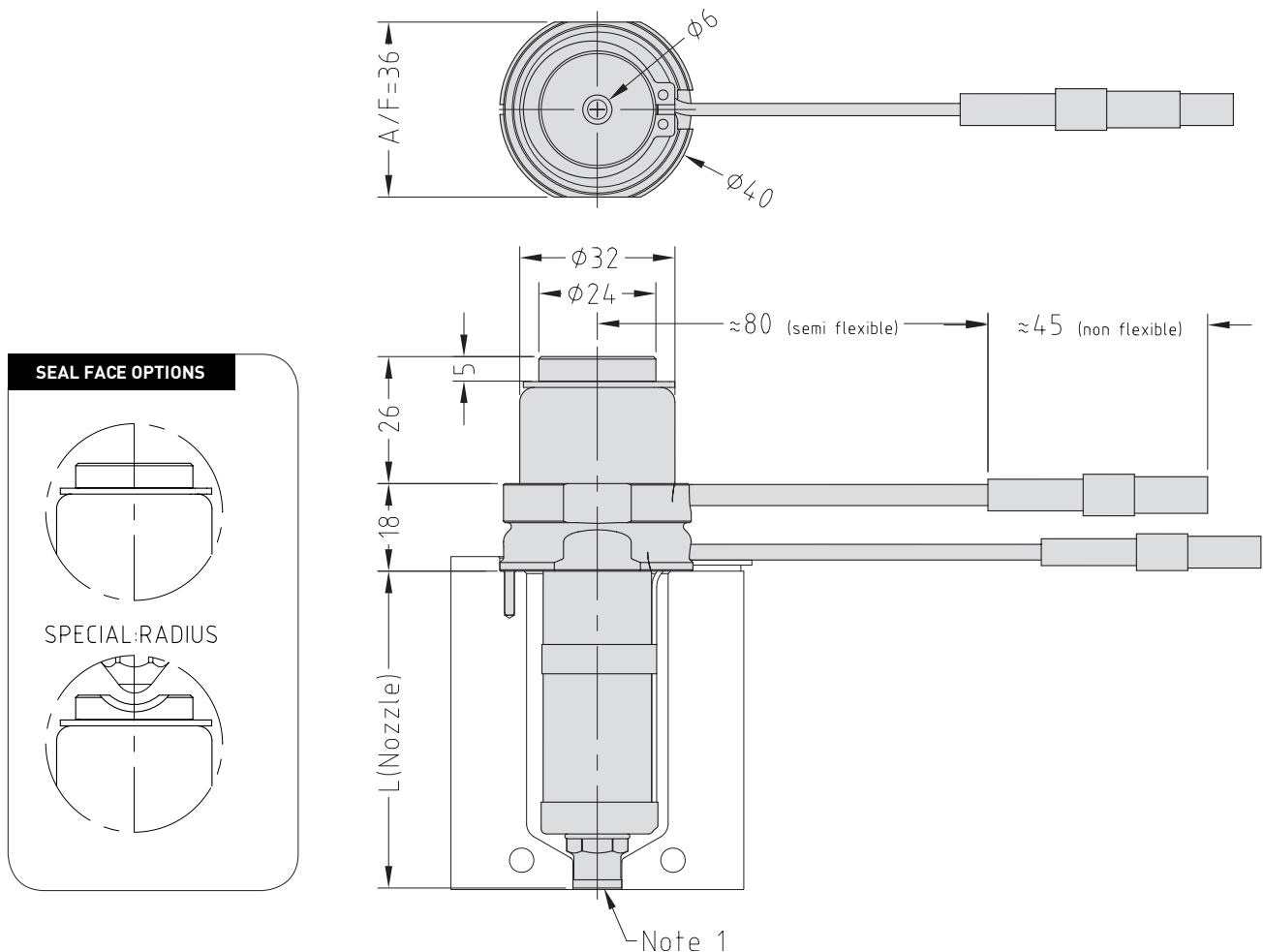
To order a nozzle assembly:

Provide the Nozzle Code + Grade  
 (Order example: SXIBN13075 G5 Radius=0)

To order a tip:

Provide the Tip Code + Grade  
 (Order example: X 13 IT G5)

Nozzle Dimensions

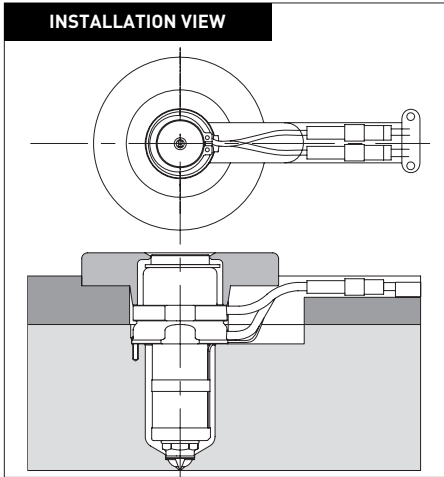


Note

1. Modify the contact area and the bush nut to suit the application.

→ See Gate Modifications and Cooling sections in the Technical Specifications.

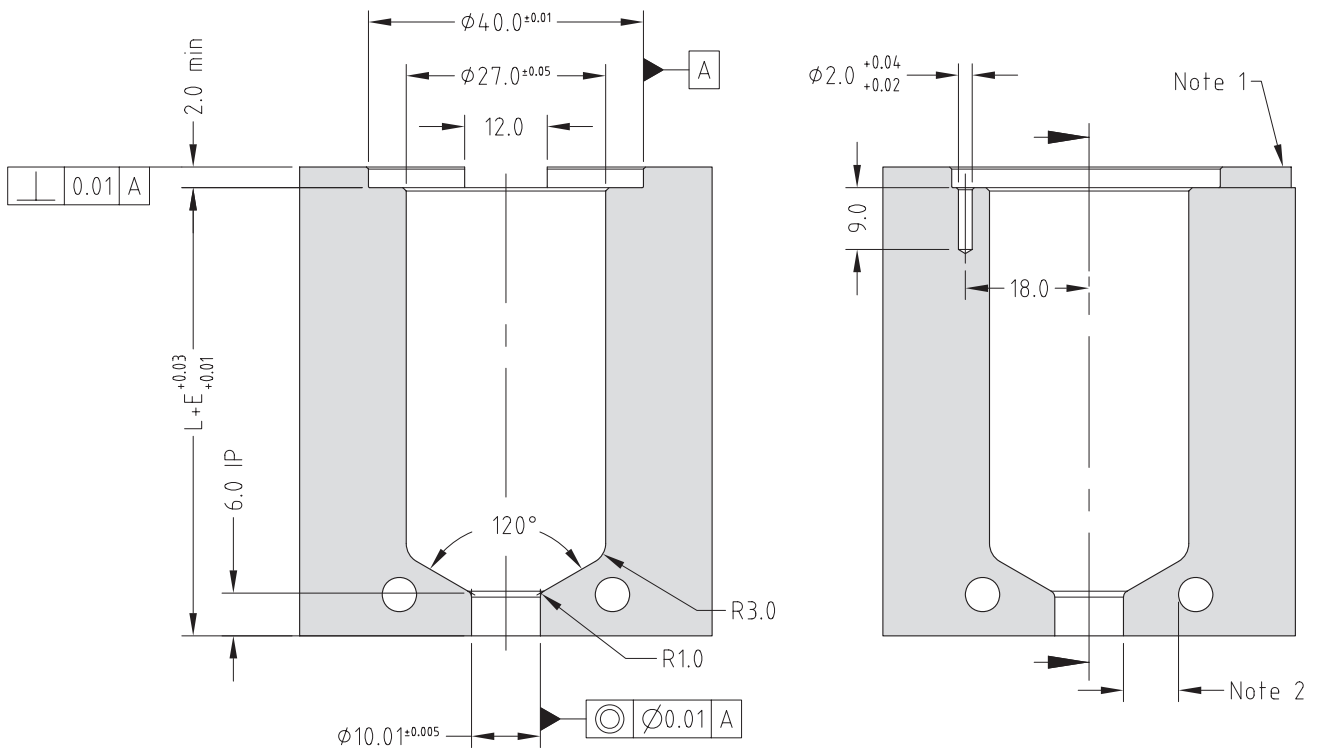
\* Before restarting the nozzle remove any residue plastic from nozzle seal face to avoid damaging the nozzle.



Multi-Hole Torpedo Nozzle Code	One-hole Torpedo Nozzle Code	Open Tip Nozzle Code	L	E@ΔT =200C	E@ΔT =250C
SXTBN13045	SXIBN13045	SXOBN13045	45.2	0.12	0.15
SXTBN13055	SXIBN13055	SXOBN13055	55.2	0.15	0.18
SXTBN13065	SXIBN13065	SXOBN13065	65.2	0.17	0.22
SXTBN13075	SXIBN13075	SXOBN13075	75.2	0.20	0.25
SXTBN13095	SXIBN13095	SXOBN13095	95.2	0.25	0.31
SXTBN13115	SXIBN13115	SXOBN13115	115.2	0.30	0.38
SXTBN13145	SXIBN13145	SXOBN13145	145.2	0.38	0.48
SXTBN13175	SXIBN13175	SXOBN13175	175.2	0.46	0.58

### Nozzle Fitment and Gate Dimensions

$$E = L \times 0.0000132 \times (\text{nozzle temp. } ^\circ\text{C} - \text{mould temp. } ^\circ\text{C})$$



#### Note

1. Wire channel to suit mould.
  2. Gate cooling is critical for correct operation and gate quality. → See Cooling section in Technical Specifications.
  3. Modify gate diameter and land to suit the part. Supplied with  $\phi 0.9$  → See Gate Modifications in Technical Specifications.
- \* Minimum strength ( $\sigma_y$ ) of nozzle plate 800MPa.

Tip and Material Grade Availability

Tip (Code)	G1	G2	G5
Multi-hole Torpedo Tip (X 13 TT)	✓	✓	✓
One-hole Torpedo Tip (X 13 IT)	✓	✓	✓
Open Tip (X 13 OT)	✓	✗	✗

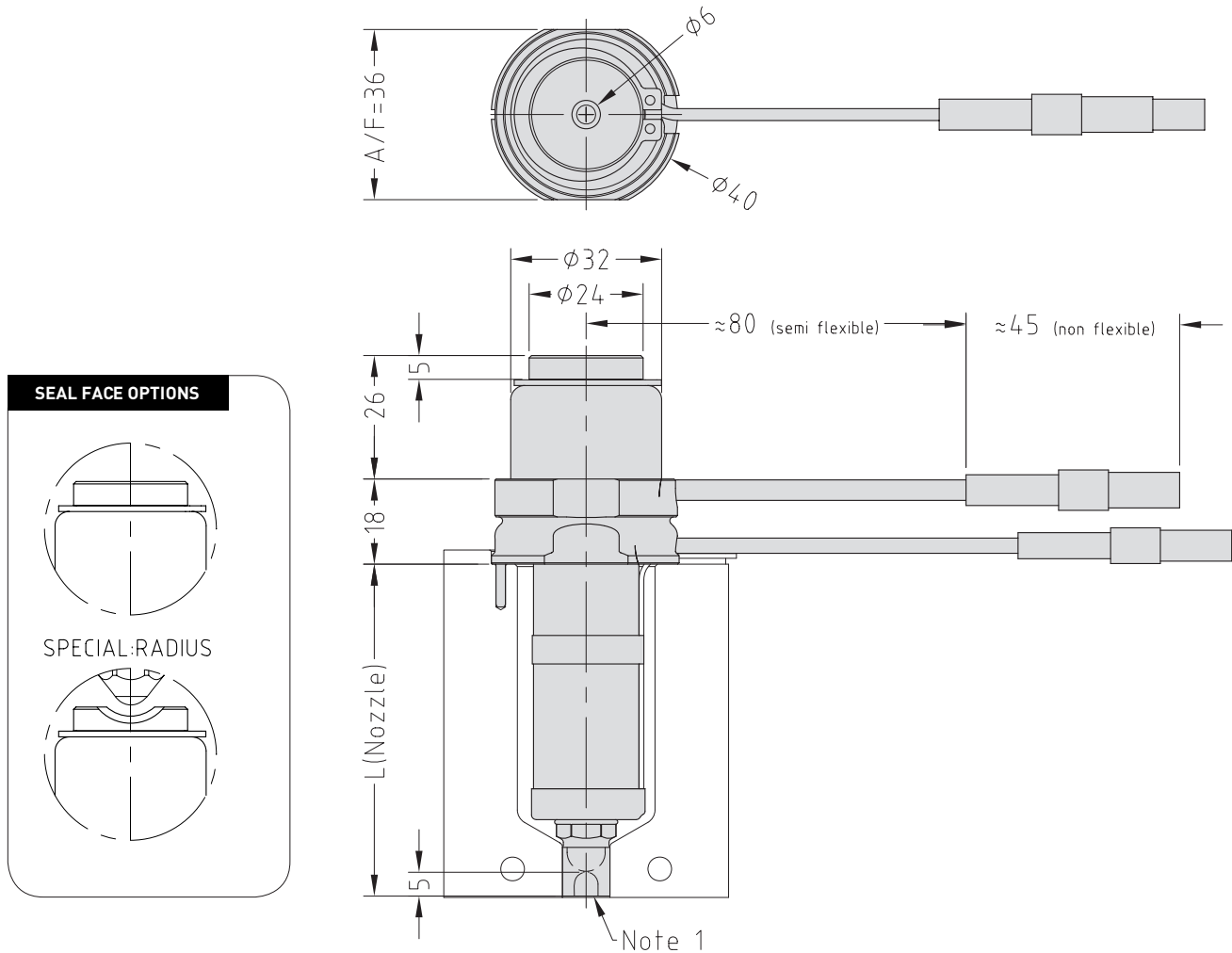
To order a nozzle assembly:

Provide the Nozzle Code + Grade  
 (Order example: SXISN13075 G5 Radius=0)

To order a tip:

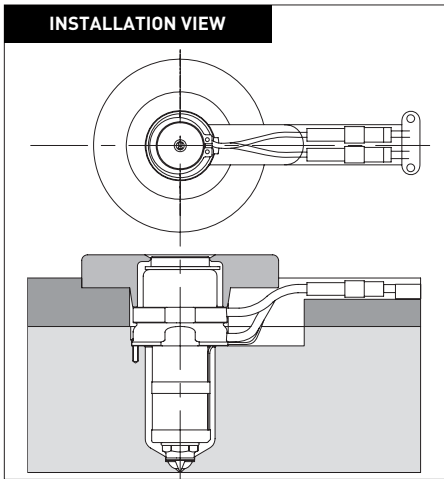
Provide the Tip Code + Grade  
 (Order example: X 13 IT G5)

Nozzle Dimensions



Note

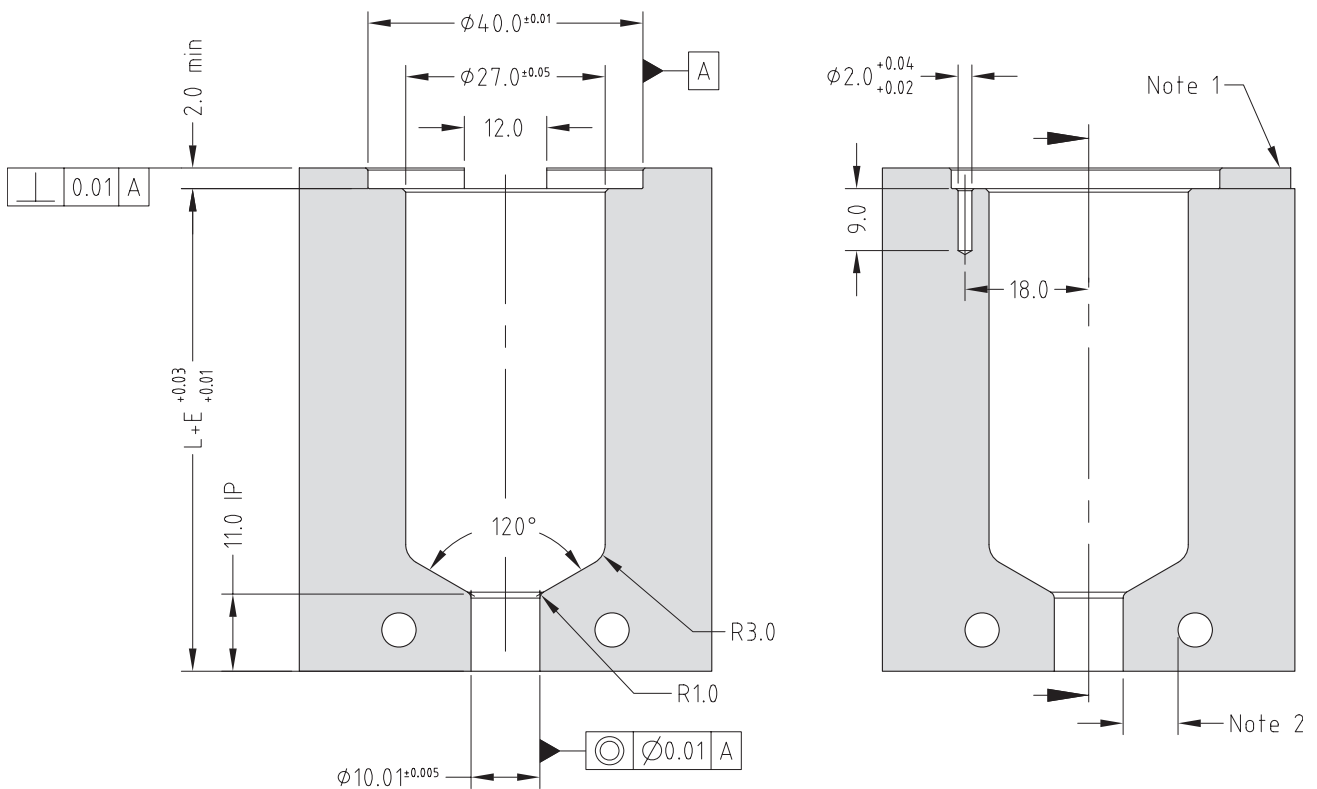
1. Modify the contact area and the sprue nut to suit the application.  
 → See Gate Modifications and Cooling sections in the Technical Specifications.
- \* Before restarting the nozzle remove any residue plastic from nozzle seal face to avoid damaging the nozzle.



Multi-Hole Torpedo Nozzle Code	One-hole Torpedo Nozzle Code	Open Tip Nozzle Code	L	E@ΔT =200C	E@ΔT =250C
SXTSN13045	SXISN13045	SXOSN13045	50.2	0.13	0.17
SXTSN13055	SXISN13055	SXOSN13055	60.2	0.16	0.20
SXTSN13065	SXISN13065	SXOSN13065	70.2	0.17	0.23
SXTSN13075	SXISN13075	SXOSN13075	80.2	0.22	0.26
SXTSN13095	SXISN13095	SXOSN13095	100.2	0.26	0.33
SXTSN13115	SXISN13115	SXOSN13115	120.2	0.32	0.40
SXTSN13145	SXISN13145	SXOSN13145	150.2	0.40	0.50
SXTSN13175	SXISN13175	SXOSN13175	180.2	0.48	0.59

**Nozzle Fitment and Gate Dimensions**

$E = L \times 0.0000132 \times (\text{nozzle temp. } ^\circ\text{C} - \text{mould temp. } ^\circ\text{C})$



**Note**

1. Wire channel to suit mould.
  2. Gate cooling is critical for correct operation and gate quality. → See Cooling section in Technical Specifications.
  3. Modify gate diameter and land to suit the part. Supplied with Ø0.9 → See Gate Modifications in Technical Specifications.
- \* Minimum strength ( $\sigma_y$ ) of nozzle plate 800MPa.

Tip and Material Grade Availability

Tip (Code)	G1	G2	G5
Multi-hole Torpedo Tip (X 13 TT)	✓	✓	✓
One-hole Torpedo Tip (X 13 IT)	✓	✓	✓
Open Tip (X 13 OT)	✓	✗	✗

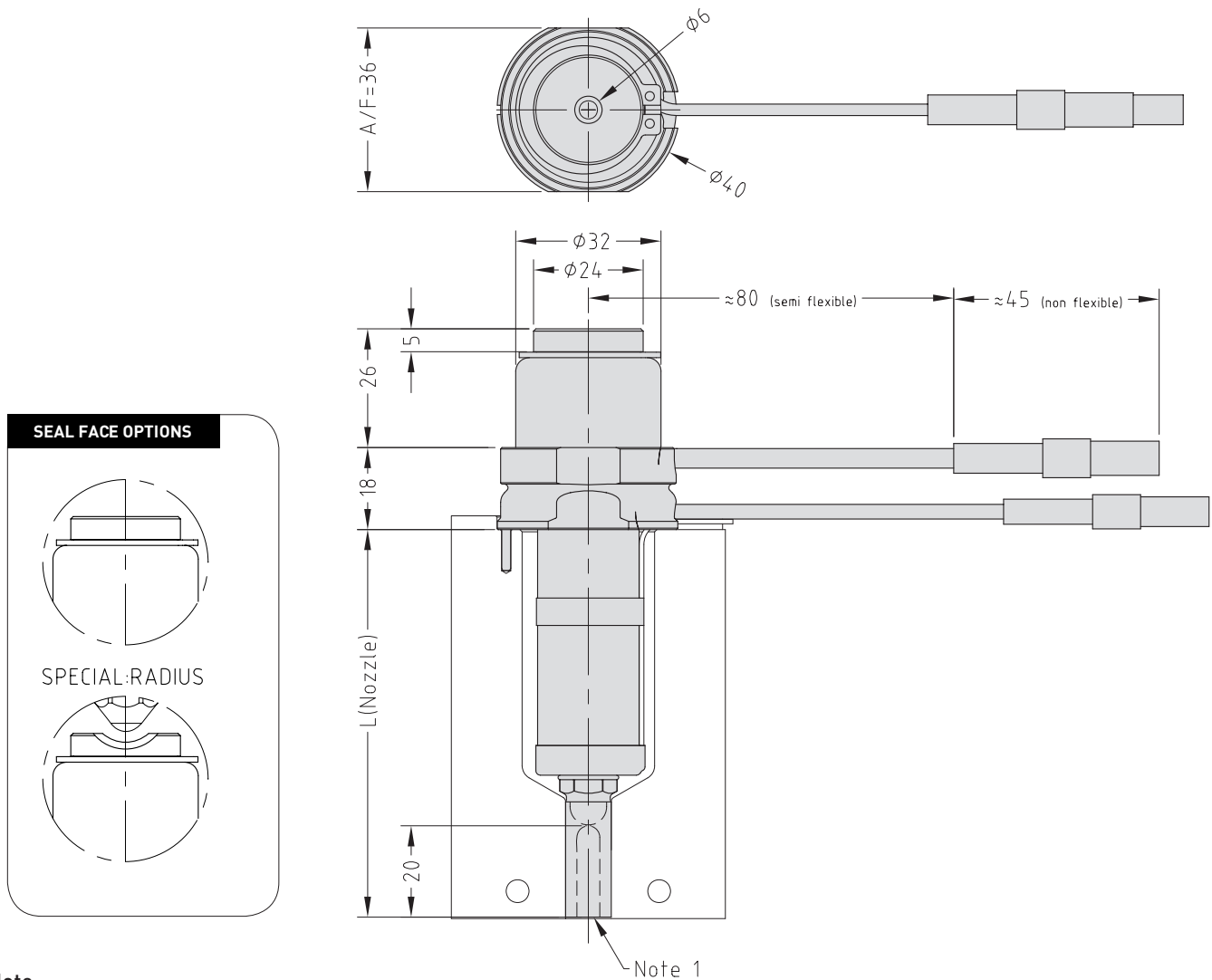
To order a nozzle assembly:

Provide the Nozzle Code + Grade  
 (Order example: SXISX13115 G5 Radius=0)

To order a tip:

Provide the Tip Code + Grade  
 (Order example: X 13 IT G5)

Nozzle Dimensions



Note

1. Modify the contact area and the sprue nut to suit the application.  
 → See Gate Modifications and Cooling sections in the Technical Specifications.
- \* Before restarting the nozzle remove any residue plastic from nozzle seal face to avoid damaging the nozzle.



Tip and Material Grade Availability

Tip (Code)	G1	G2	G5
Multi-hole Torpedo Tip (X 13 TT)	✓	✓	✓
One-hole Torpedo Tip (X 13 IT)	✓	✓	✓
Open Tip (X 13 OT)	✓	✗	✗

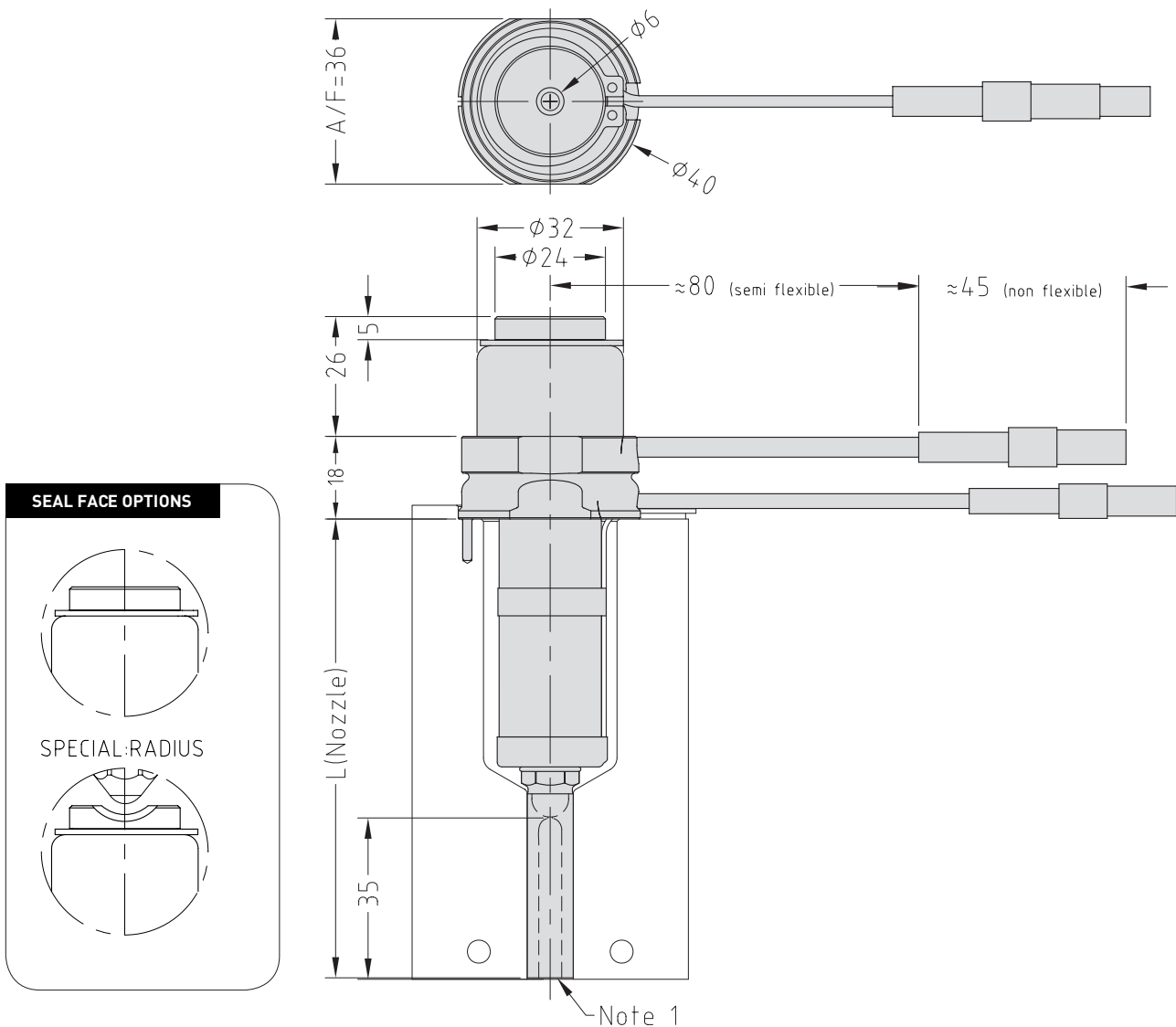
To order a nozzle assembly:

Provide the Nozzle Code + Grade  
 (Order example: SXISL13075 G5 Radius=0)

To order a tip:

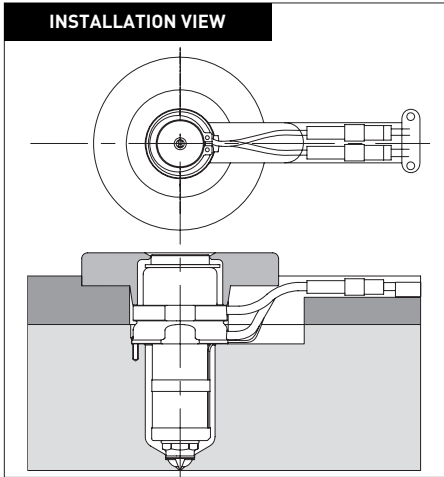
Provide the Tip Code + Grade  
 (Order example: X 13 IT G5)

Nozzle Dimensions



Note

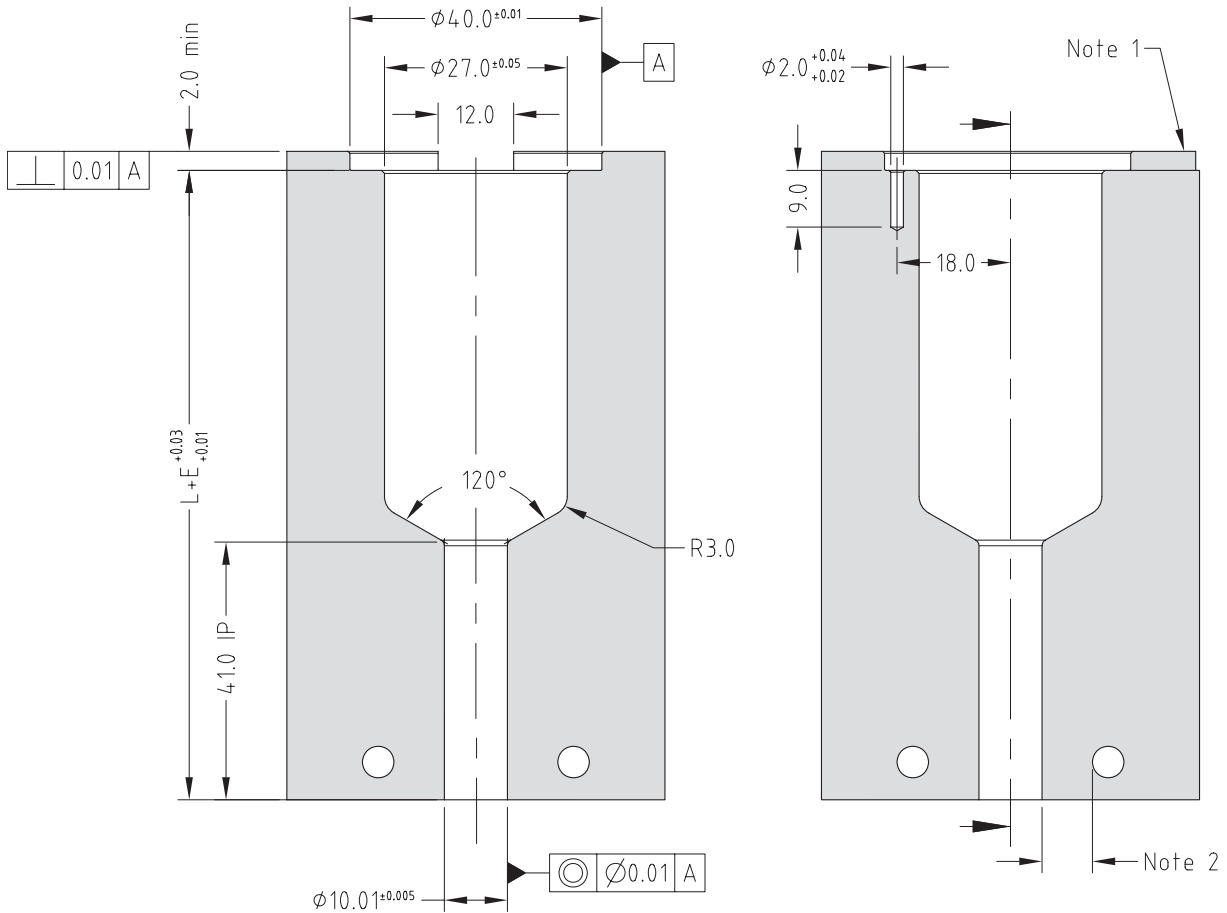
1. Modify the contact area and the sprue nut to suit the application.  
 → See Gate Modifications and Cooling sections in the Technical Specifications.
- \* Before restarting the nozzle remove any residue plastic from nozzle seal face to avoid damaging the nozzle.



Multi-Hole Torpedo Nozzle Code	One-hole Torpedo Nozzle Code	Open Tip Nozzle Code	L	E@ΔT =200C	E@ΔT =250C
SXTSL13045	SXISL13045	SXOSL13045	80.2	0.21	0.26
SXTSL13055	SXISL13055	SXOSL13055	90.2	0.24	0.30
SXTSL13065	SXISL13065	SXOSL13065	100.2	0.26	0.33
SXTSL13075	SXISL13075	SXOSL13075	110.2	0.29	0.36
SXTSL13095	SXISL13095	SXOSL13095	130.2	0.34	0.43
SXTSL13115	SXISL13115	SXOSL13115	150.2	0.40	0.50
SXTSL13145	SXISL13145	SXOSL13145	180.2	0.48	0.59
SXTSL13175	SXISL13175	SXOSL13175	210.2	0.55	0.69

**Nozzle Fitment and Gate Dimensions**

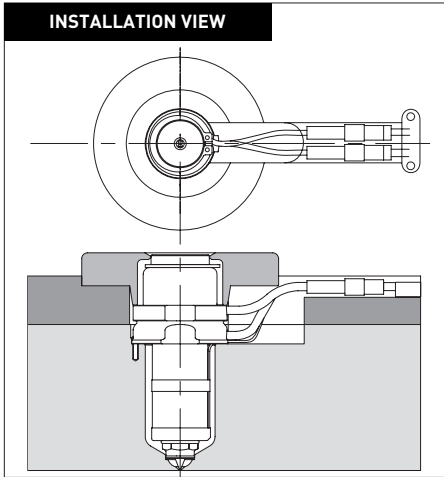
$E = L \times 0.0000132 \times (\text{nozzle temp. } ^\circ\text{C} - \text{mould temp. } ^\circ\text{C})$



**Note**

1. Wire channel to suit mould.
  2. Gate cooling is critical for correct operation and gate quality. → See Cooling section in Technical Specifications.
  3. Modify gate diameter and land to suit the part. Supplied with Ø0.9 → See Gate Modifications in Technical Specifications.
- \* Minimum strength ( $\sigma_y$ ) of nozzle plate 800MPa.

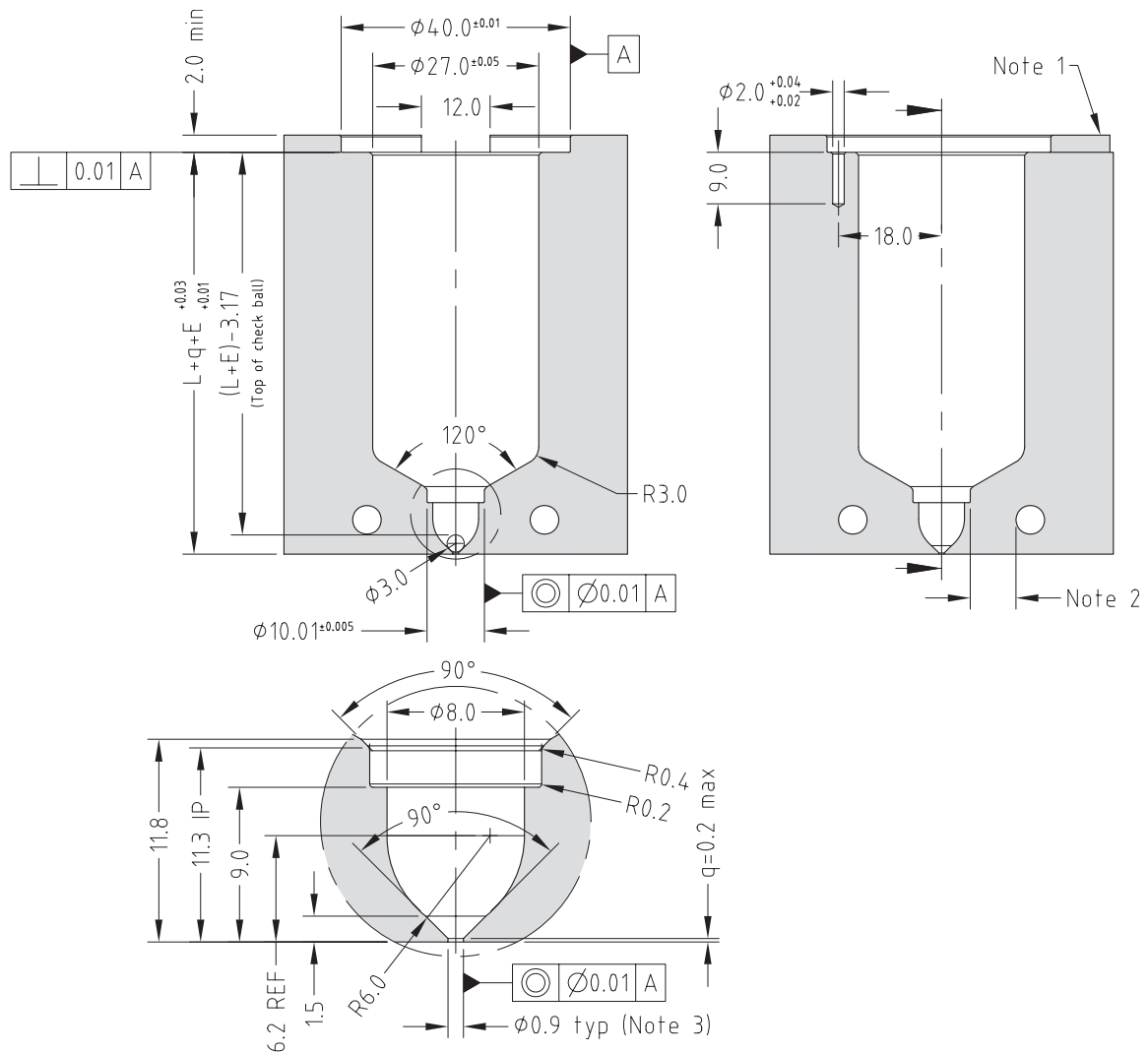




Multi-Hole Torpedo Nozzle Code	One-hole Torpedo Nozzle Code	L	E@ΔT =200C	E@ΔT =250C
SXTT13045+5	SXIT13045+5	50	0.13	0.17
SXTT13055+5	SXIT13055+5	60	0.16	0.20
SXTT13065+5	SXIT13065+5	70	0.18	0.23
SXTT13075+5	SXIT13075+5	80	0.21	0.26
SXTT13095+5	SXIT13095+5	100	0.26	0.33
SXTT13115+5	SXIT13115+5	120	0.32	0.40
SXTT13145+5	SXIT13145+5	150	0.40	0.50
SXTT13175+5	SXIT13175+5	180	0.48	0.59

### Nozzle Fitment and Gate Dimensions

$$E = L \times 0.0000132 \times (\text{nozzle temp. } ^\circ\text{C} - \text{mould temp. } ^\circ\text{C})$$



**Note**

1. Wire channel to suit mould.
  2. Gate cooling is critical for correct operation and gate quality. → See Cooling section in Technical Specifications.
  3. Modify gate diameter and land to suit the part. → See Gate Modifications in Technical Specifications.
- \* Minimum strength ( $\sigma_y$ ) of nozzle plate 800MPa.

Tip and Material Grade Availability

Tip (Code)	G1	G2	G5
Multi-hole Torpedo Tip (X 13 TT+10)	✓	✓	✗
One-hole Torpedo Tip (X 13 IT+10)	✓	✓	✗
Open Tip	✗	✗	✗

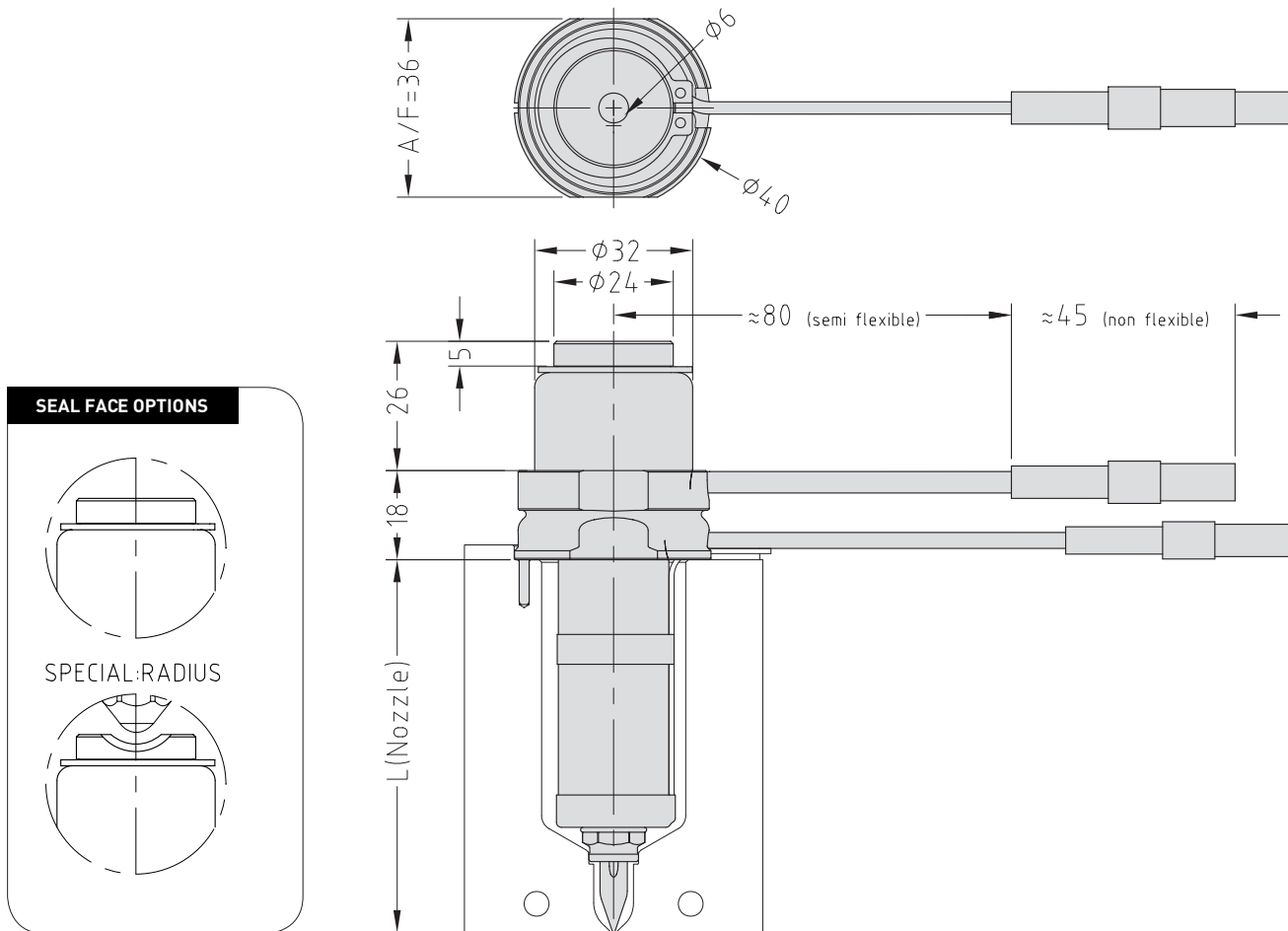
To order a nozzle assembly:

Provide the Nozzle Code + Grade  
 (Order example: SXIT13115+10 G2 Radius=0)

To order a tip:

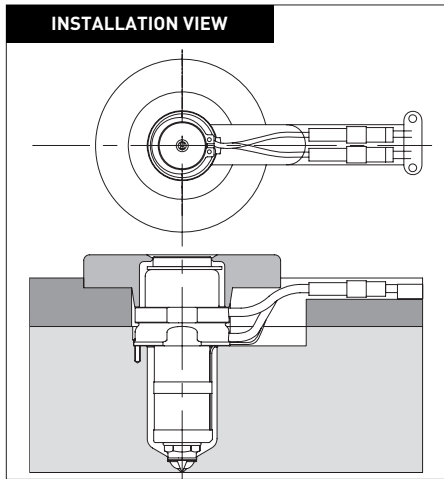
Provide the Tip Code + Grade  
 (Order example: X 13 IT+10 G2)

Nozzle Dimensions



Note

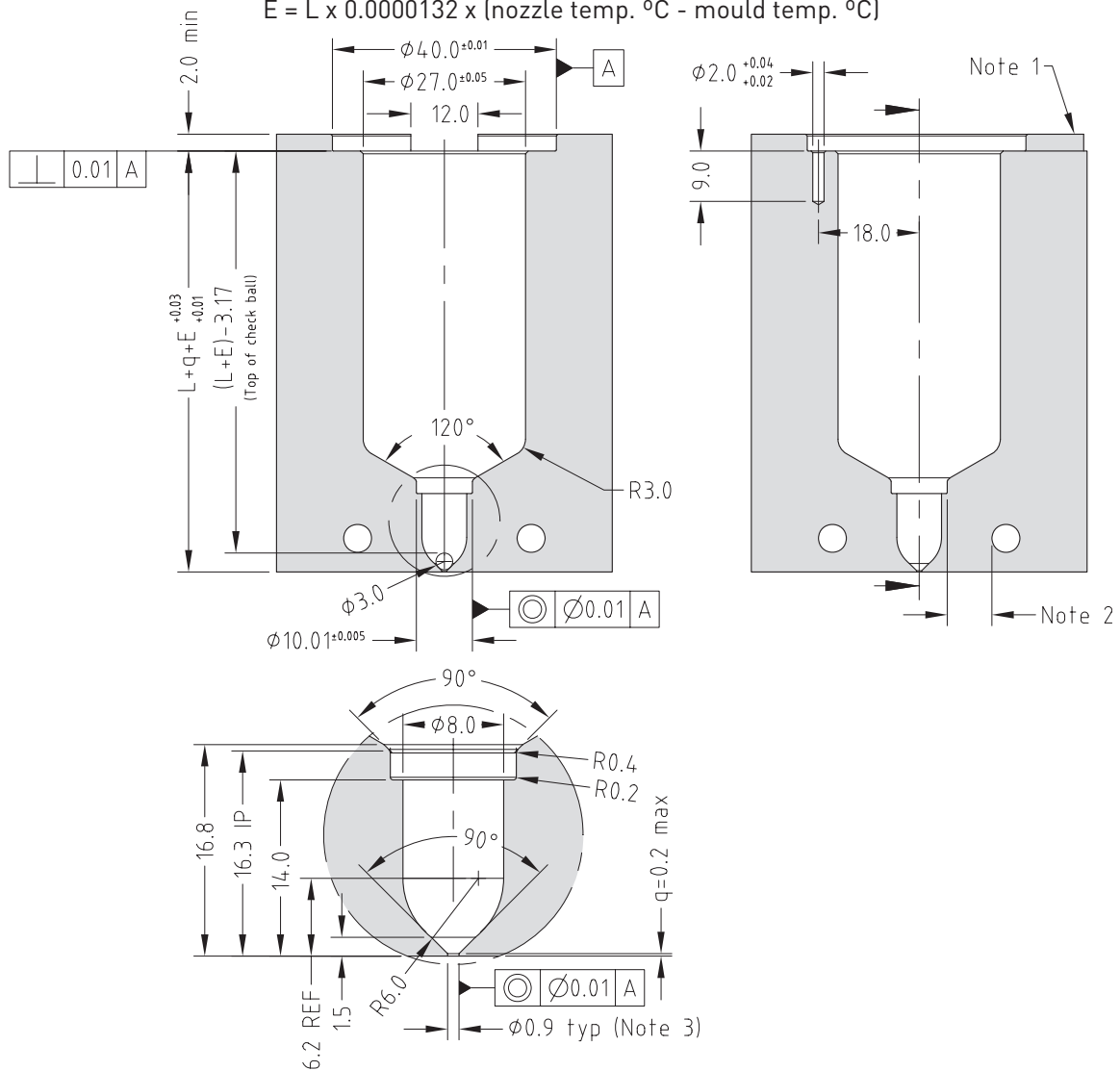
\* Before restarting the nozzle remove any residue plastic from nozzle seal face to avoid damaging the nozzle.



Multi-Hole Torpedo Nozzle Code	One-hole Torpedo Nozzle Code	L	E@ΔT =200C	E@ΔT =250C
SXTT13045+10	SXIT13045+10	55	0.15	0.18
SXTT13055+10	SXIT13055+10	65	0.17	0.21
SXTT13065+10	SXIT13065+10	75	0.20	0.25
SXTT13075+10	SXIT13075+10	85	0.22	0.28
SXTT13095+10	SXIT13095+10	105	0.28	0.35
SXTT13115+10	SXIT13115+10	125	0.33	0.41
SXTT13145+10	SXIT13145+10	155	0.41	0.51
SXTT13175+10	SXIT13175+10	185	0.49	0.61

### Nozzle Fitment and Gate Dimensions

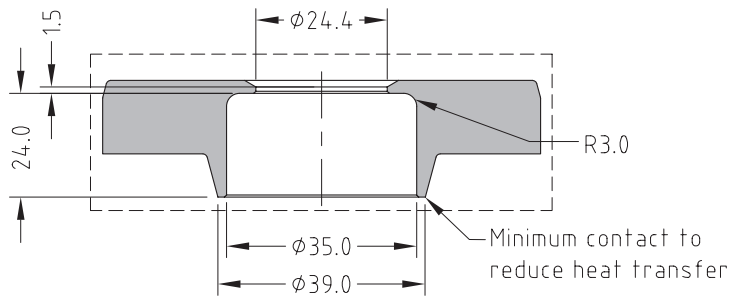
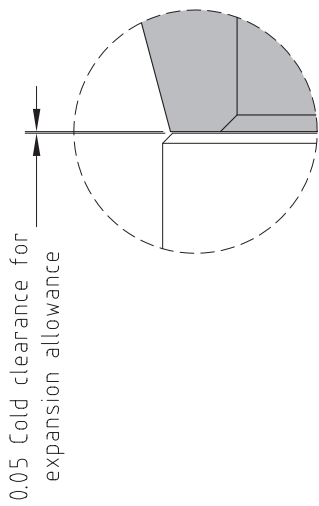
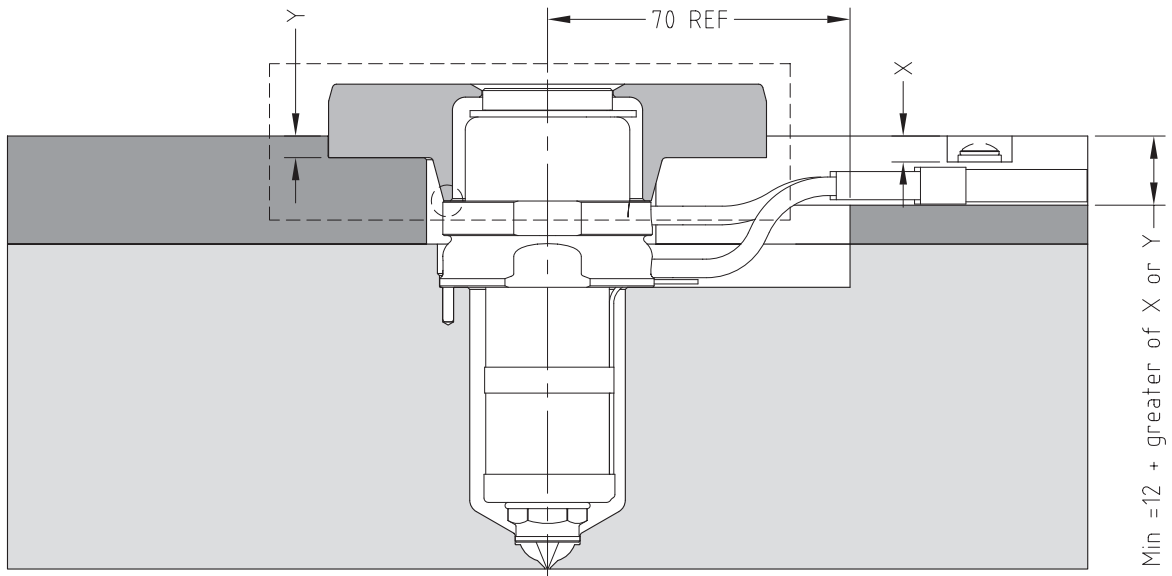
$$E = L \times 0.0000132 \times (\text{nozzle temp. } ^\circ\text{C} - \text{mould temp. } ^\circ\text{C})$$



**Note**

1. Wire channel to suit mould.
  2. Gate cooling is critical for correct operation and gate quality. → See Cooling section in Technical Specifications.
  3. Modify gate diameter and land to suit the part. → See Gate Modifications in Technical Specifications.
- \* Minimum strength ( $\sigma_y$ ) of nozzle plate 800MPa.

Installation Details



All other dimensions and details to suit mould design



**Mastip Head Office New Zealand**

558 Rosebank Road  
Avondale 1026, Auckland  
PO Box 90-651  
Victoria Street West  
Auckland 1142  
New Zealand  
Phone: +64 9 970 2100  
Fax: +64 9 970 2070  
Email: mastip@mastip.com

**Mastip Regional Office Europe**

Phone: +33 4 724 72 800  
Fax: +33 4 724 72 801  
Email: europe@mastip.com

**Mastip Regional Office China**

Phone: +86 21 644 77838  
Fax: +86 21 644 77828  
Email: china@mastip.com

**Mastip Regional Office North America**

Phone: +1 262 644 9400  
Fax: +1 262 644 9402  
Email: northamerica@mastip.com

40-000-002

V1.04

